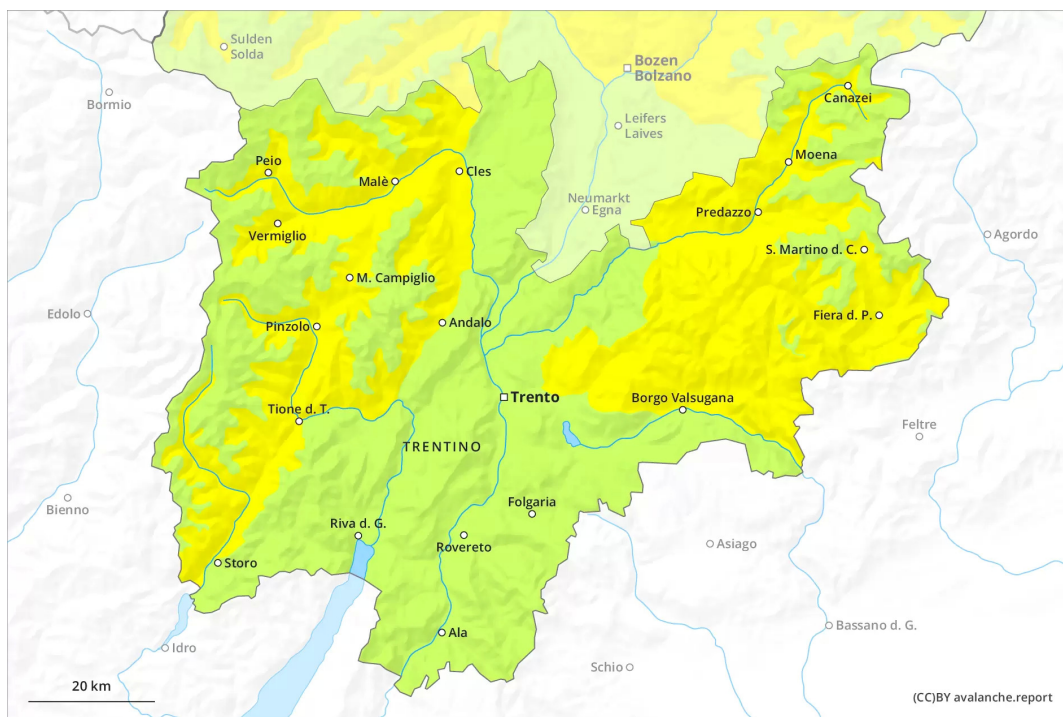
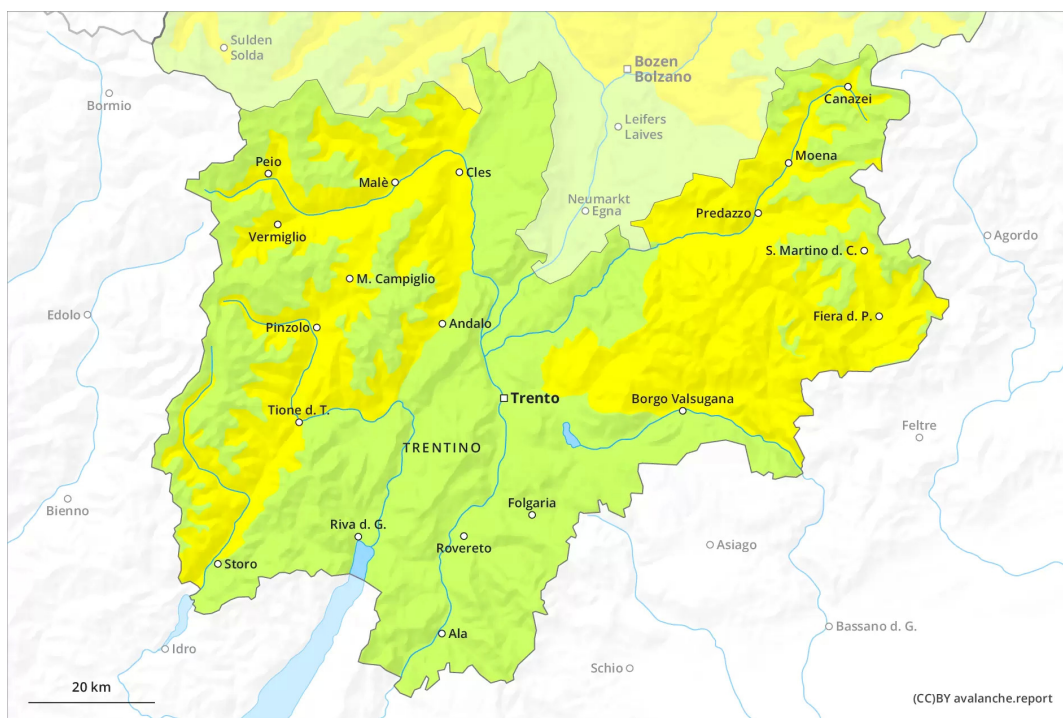




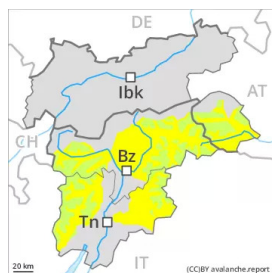
AM



PM



Danger Level 2 - Moderate



Tendency: Constant avalanche danger →
on Sunday 20 03 2022

Wet small and medium sized avalanches are still possible.

Wet avalanches can in some places be released by people and reach medium size. This applies on steep east, south and west facing slopes below approximately 2600 m, as well as in all aspects at intermediate altitudes. Caution is to be exercised in particular in areas where the snow cover is rather shallow. Here the snowpack is weaker. As a consequence of warming and solar radiation, the natural activity of wet avalanches will increase.

In addition a latent danger of gliding avalanches exists. This applies on steep grassy slopes in the regions with a lot of snow.

Backcountry tours should be started early and concluded timely.

Snowpack

Danger patterns

dp.10: springtime scenario

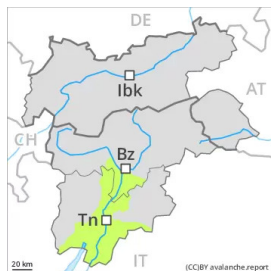
Outgoing longwave radiation during the night will be reduced in some case. The surface of the snowpack is frozen, but not to a significant depth and will soften quickly. Sunshine and high temperatures will give rise as the day progresses to rapid and thorough wetting of the snowpack in particular on steep sunny slopes below approximately 2600 m. In areas where the snow cover is rather shallow the snowpack will soften more quickly.

Snow depths vary greatly, depending on the influence of the wind. In particular in the south as well as at low and intermediate altitudes only a little snow is now lying.

Tendency

The conditions in the morning are quite favourable. As a consequence of warming during the day and solar radiation individual wet snow slides and avalanches are possible.

Danger Level 1 - Low



Tendency: Constant avalanche danger →
on Sunday 20 03 2022

Over a wide area from a snow sport perspective, insufficient snow is lying. Wet snow requires caution.

The surface of the snowpack will only just freeze and will already be soft in the early morning. The danger of wet and gliding avalanches will persist, especially on steep east, south and west facing slopes. Mostly avalanches are only small but can be released in some cases even by a single winter sport participant. Caution is to be exercised in particular in areas where the snow cover is rather shallow. At the Latemar the avalanche prone locations are a little more prevalent and the danger is greater.

Snowpack

Danger patterns

dp.10: springtime scenario

Outgoing longwave radiation during the night will be reduced in some case. The surface of the snowpack is frozen, but not to a significant depth and will soften quickly. Sunshine and high temperatures will give rise as the day progresses to rapid and thorough wetting of the snowpack in particular on steep sunny slopes below approximately 2600 m. In areas where the snow cover is rather shallow the snowpack will soften more quickly.

In particular in the south as well as at low and intermediate altitudes only a little snow is now lying.

Tendency

The conditions in the morning are quite favourable. As a consequence of warming during the day and solar radiation individual wet snow slides and avalanches are possible.