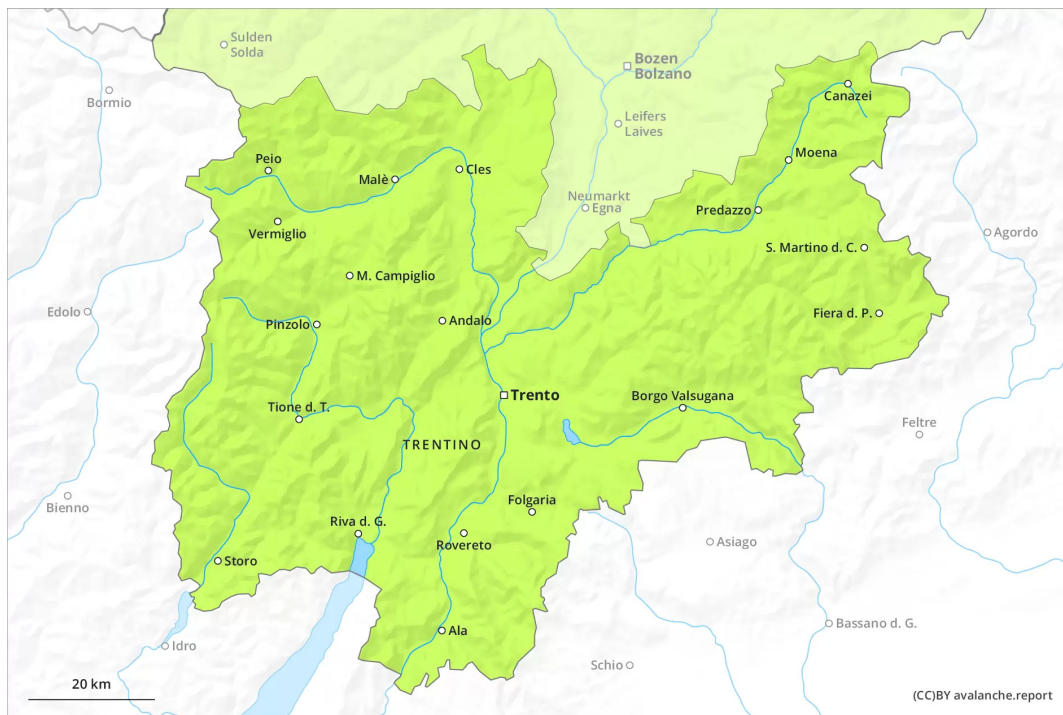
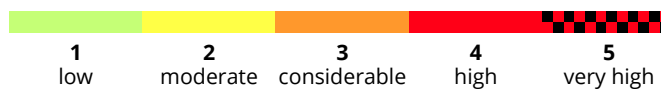
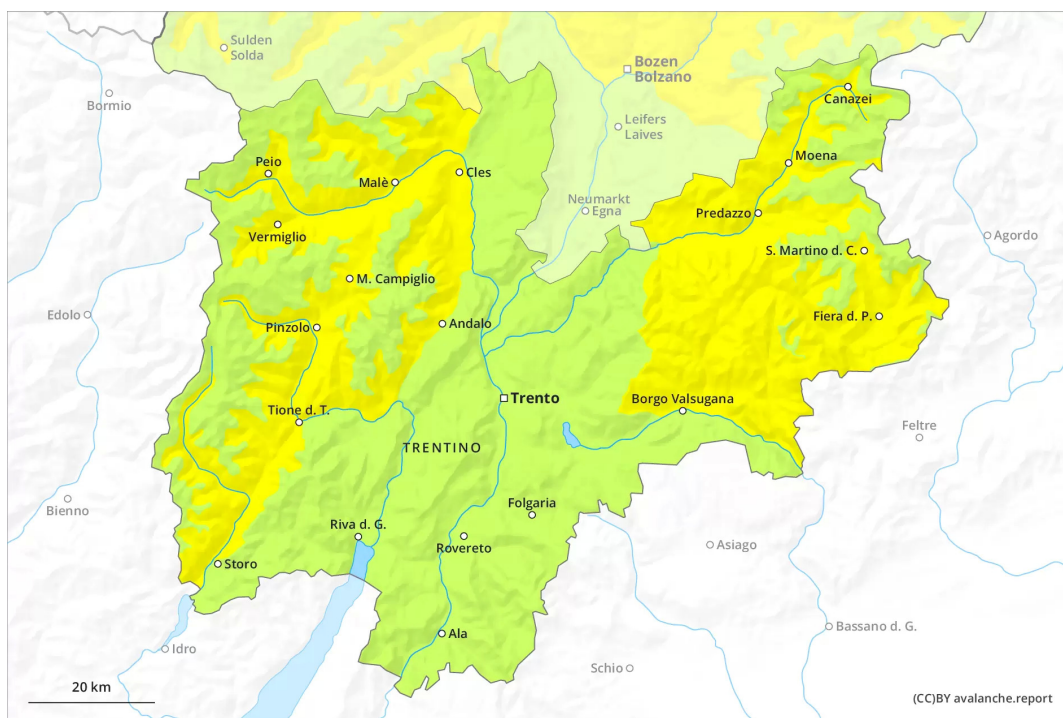




AM



PM



Danger Level 2 - Moderate

AM:



Tendency: Constant avalanche danger →
on Friday 25 03 2022

PM:



Tendency: Constant avalanche danger →
on Friday 25 03 2022

The conditions are spring-like.

A clear night will be followed in the early morning by favourable conditions generally. As the day progresses as a consequence of warming during the day and solar radiation there will be an increase in the avalanche danger. Small to medium-sized wet and gliding avalanches are possible, especially on steep east, south and west facing slopes below approximately 2600 m, as well as in all aspects at intermediate altitudes.

Wet avalanches can in some places be released by people.

Backcountry tours should be started early and concluded timely. There is a danger of falling on the hard snow surface.

Snowpack

Danger patterns

dp.10: springtime scenario

Outgoing longwave radiation during the night will be good over a wide area. The surface of the snowpack will freeze to form a strong crust and will soften during the day. Sunshine and high temperatures will give rise as the day progresses to softening of the snowpack in particular on steep sunny slopes below approximately 2600 m.

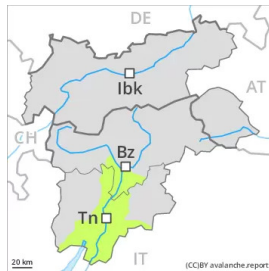
In particular in the south less snow than usual is lying.

Tendency

The conditions remain spring-like. Increase in danger of wet avalanches in the course of the day.



Danger Level 1 - Low



Tendency: Constant avalanche danger →
on Friday 25 03 2022

Over a wide area from a snow sport perspective, insufficient snow is lying. Wet snow requires caution.

A clear night will be followed in the early morning by favourable conditions over a wide area. The danger of wet and gliding avalanches will increase a little during the day. On steep slopes individual mostly small wet avalanches are possible. In the north the avalanche prone locations are more prevalent.

Snowpack

Danger patterns

dp.10: springtime scenario

Only a little snow is now lying.

Outgoing longwave radiation during the night will be good over a wide area. The surface of the snowpack will freeze to form a strong crust. Sunshine and high temperatures will give rise as the day progresses to softening of the snowpack in particular on steep sunny slopes.

Tendency

The conditions remain spring-like.