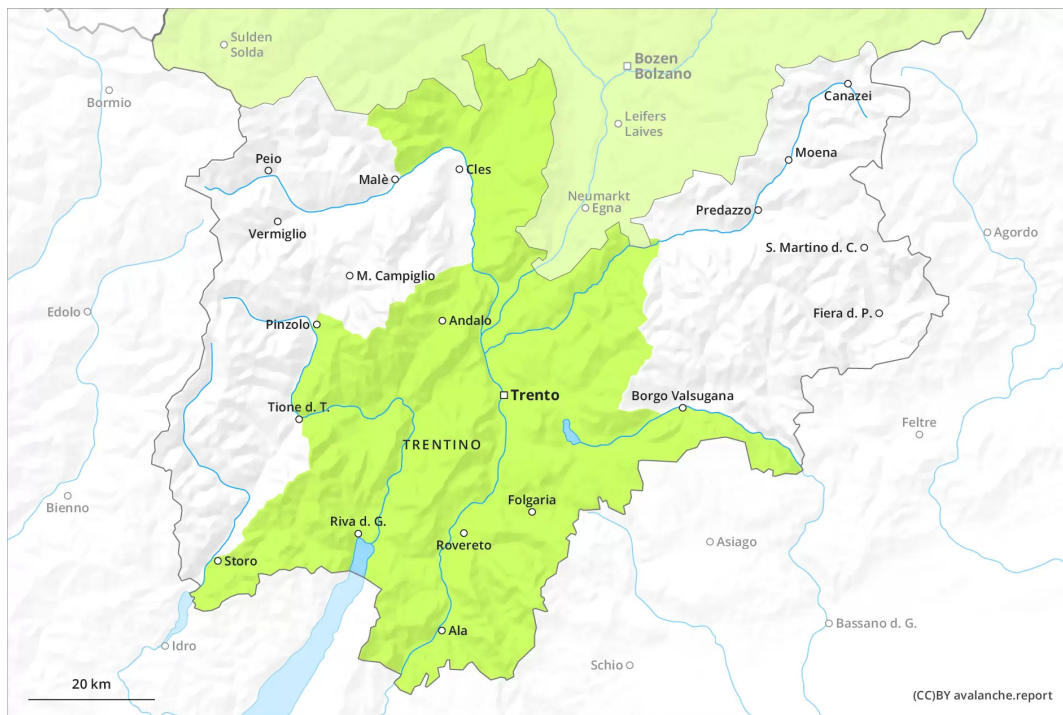
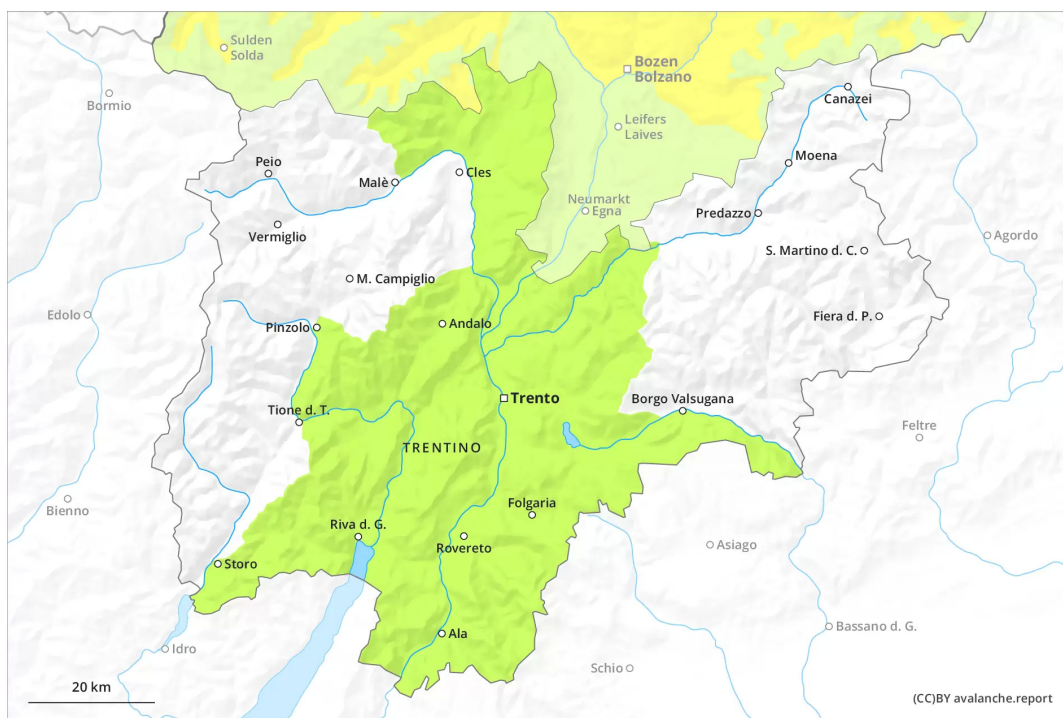




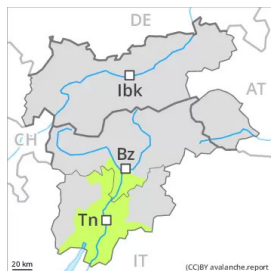
AM



PM



Danger Level 1 - Low



Tendency: Constant avalanche danger →
on Tuesday 29 03 2022

Over a wide area from a snow sport perspective, insufficient snow is lying. Wet snow requires caution.

A clear night will be followed in the early morning by favourable conditions over a wide area. The danger of moist and wet snow slides will increase a little during the day.

Snowpack

Danger patterns

dp.10: springtime scenario

Only a little snow is now lying.

Outgoing longwave radiation during the night will be good over a wide area. The surface of the snowpack will freeze to form a strong crust. Sunshine and high temperatures will give rise as the day progresses to softening of the snowpack in particular on steep sunny slopes.

Tendency

The conditions remain spring-like.