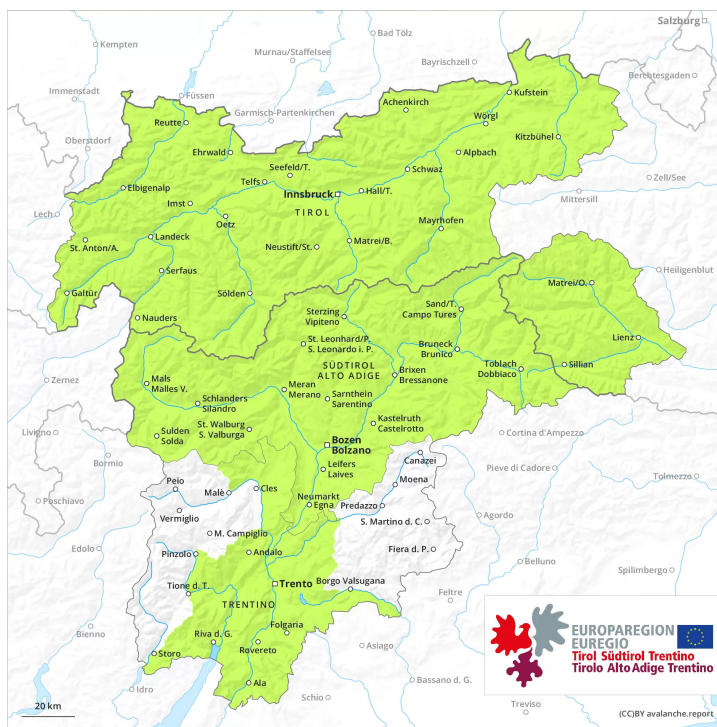
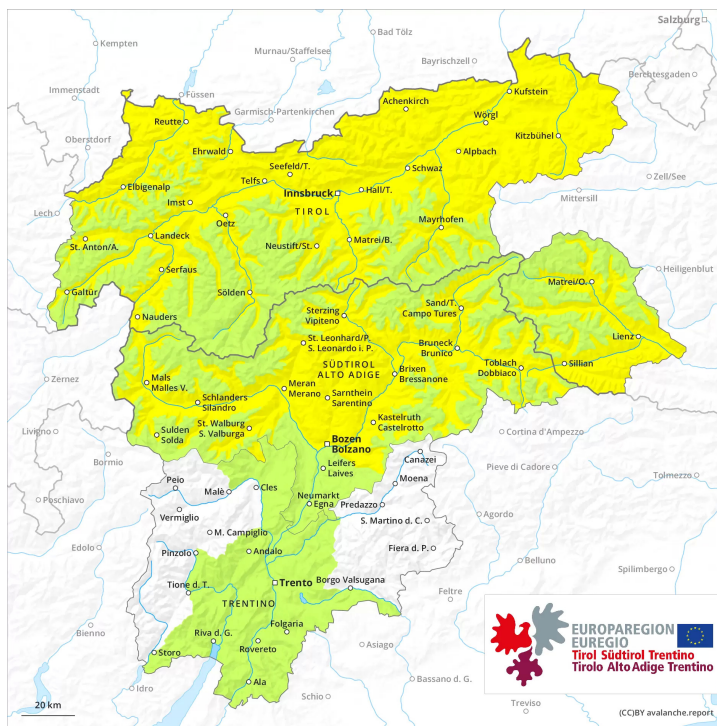




AM



PM



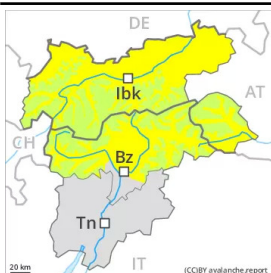
Danger Level 2 - Moderate

AM:



Tendency: Constant avalanche danger →
on Tuesday 29 03 2022

PM:



Tendency: Constant avalanche danger →
on Tuesday 29 03 2022

The avalanche conditions are spring-like. The avalanche danger will increase during the day.

Late morning: A clear night will be followed by favourable conditions generally. There is a danger of falling on the hard snow surface. Afternoon: As a consequence of warming during the day and solar radiation there will be an increase in the avalanche danger. Wet avalanches can be released by a single winter sport participant and reach medium size, especially on very steep east, south and west facing slopes below approximately 2600 m. In addition individual gliding avalanches and snow slides are possible. Backcountry tours should be concluded timely.

Snowpack

Danger patterns

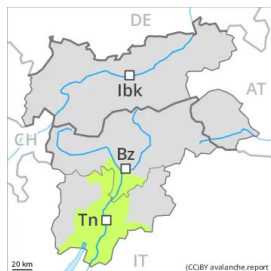
dp.10: springtime scenario

Outgoing longwave radiation during the night will be good over a wide area. The surface of the snowpack will freeze to form a strong crust and will soften during the day. Sunshine and high temperatures will give rise as the day progresses to softening of the snowpack on very steep sunny slopes. Less snow than usual is lying.

Tendency

Outgoing longwave radiation during the night will be reduced. This applies in particular in the west.

Danger Level 1 - Low



Tendency: Constant avalanche danger →
on Tuesday 29 03 2022

Over a wide area from a snow sport perspective, insufficient snow is lying. Wet snow requires caution.

A clear night will be followed in the early morning by favourable conditions over a wide area. The danger of moist and wet snow slides will increase a little during the day.

Snowpack

Danger patterns

dp.10: springtime scenario

Only a little snow is now lying.

Outgoing longwave radiation during the night will be good over a wide area. The surface of the snowpack will freeze to form a strong crust. Sunshine and high temperatures will give rise as the day progresses to softening of the snowpack in particular on steep sunny slopes.

Tendency

The conditions remain spring-like.