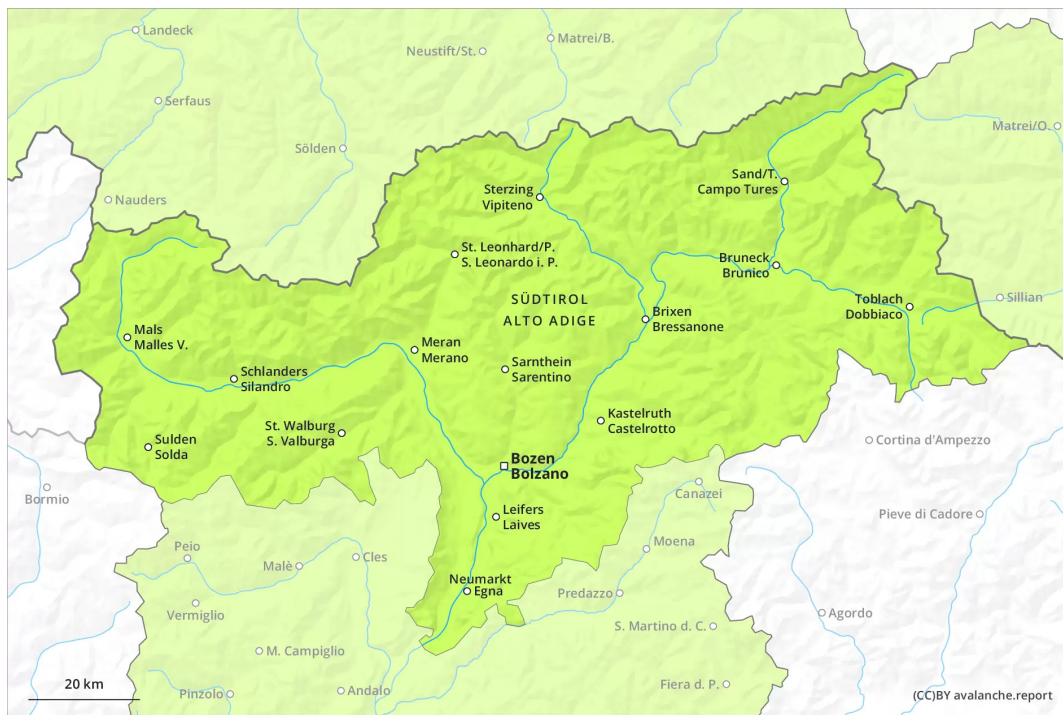
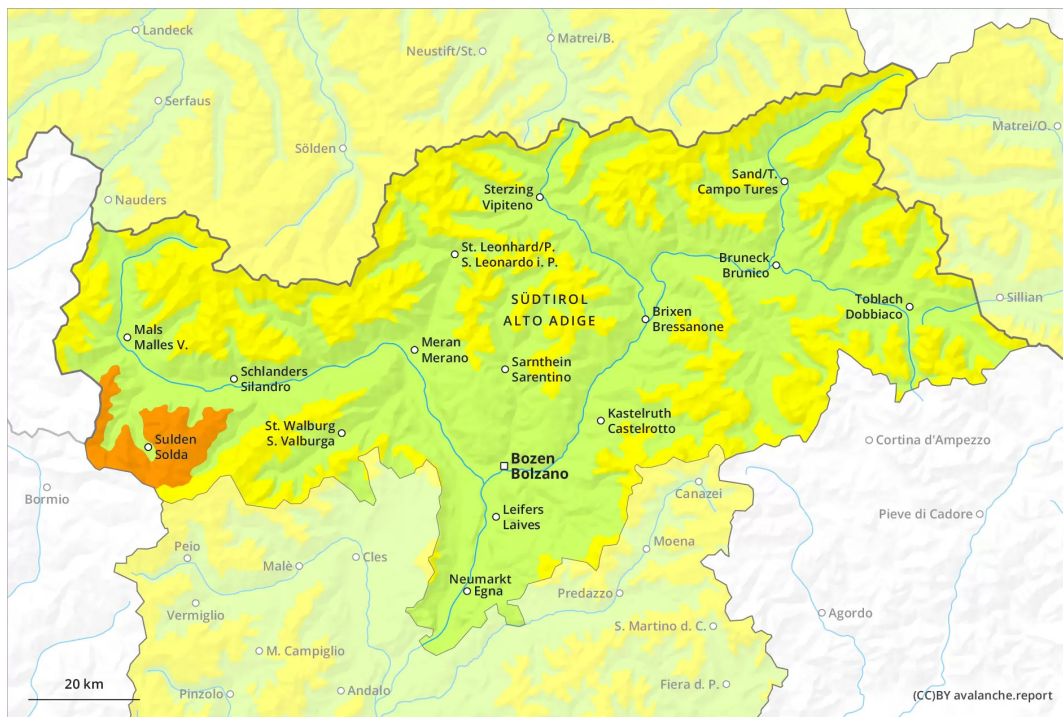




AM



PM



Danger Level 3 - Considerable

AM:



Tendency: Constant avalanche danger →
on Saturday 02 04 2022

PM:



Tendency: Constant avalanche danger →
on Saturday 02 04 2022

Increase in danger of dry avalanches as a consequence of new snow and wind.

High altitudes and the high Alpine regions: Fresh wind slabs require caution. By the evening as a consequence of the snowfall there will be an increase in the avalanche danger to level 3 (considerable). The avalanche prone locations are to be found in particular on very steep shady slopes and adjacent to ridgelines. Avalanches can in some cases be released, even by a single winter sport participant and reach large size in isolated cases.

On steep grassy slopes individual gliding avalanches are possible towards the evening.

Snowpack

Danger patterns

dp.6: cold, loose snow and wind

20 to 40 cm of snow, and even more in some localities, will fall on Friday. The wind will be light to moderate. The wind slabs are in some cases prone to triggering on very steep shady slopes.

Tendency

Some snow will fall on Saturday in some localities. Fresh wind slabs require caution.

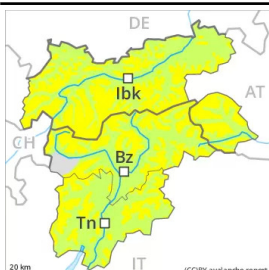
Danger Level 2 - Moderate

AM:



Tendency: Constant avalanche danger →
on Saturday 02 04 2022

PM:



Tendency: Constant avalanche danger →
on Saturday 02 04 2022

Gradual increase in danger of dry avalanches as a consequence of new snow and wind.

High altitudes and the high Alpine regions: Fresh wind slabs require caution. The avalanche prone locations are to be found in particular on very steep shady slopes and adjacent to ridgelines. Mostly avalanches are only small but can be released in isolated cases by a single winter sport participant.

On steep grassy slopes individual gliding avalanches are possible towards the evening, in particular in the regions exposed to heavier precipitation.

Snowpack

Danger patterns

dp.6: cold, loose snow and wind

10 to 30 cm of snow, and even more in some localities, will fall on Friday. The wind will be light to moderate. The wind slabs are in some cases prone to triggering on very steep shady slopes. This applies in the regions exposed to heavier precipitation adjacent to ridgelines.

Tendency

Some snow will fall on Saturday in some localities. Fresh wind slabs require caution.