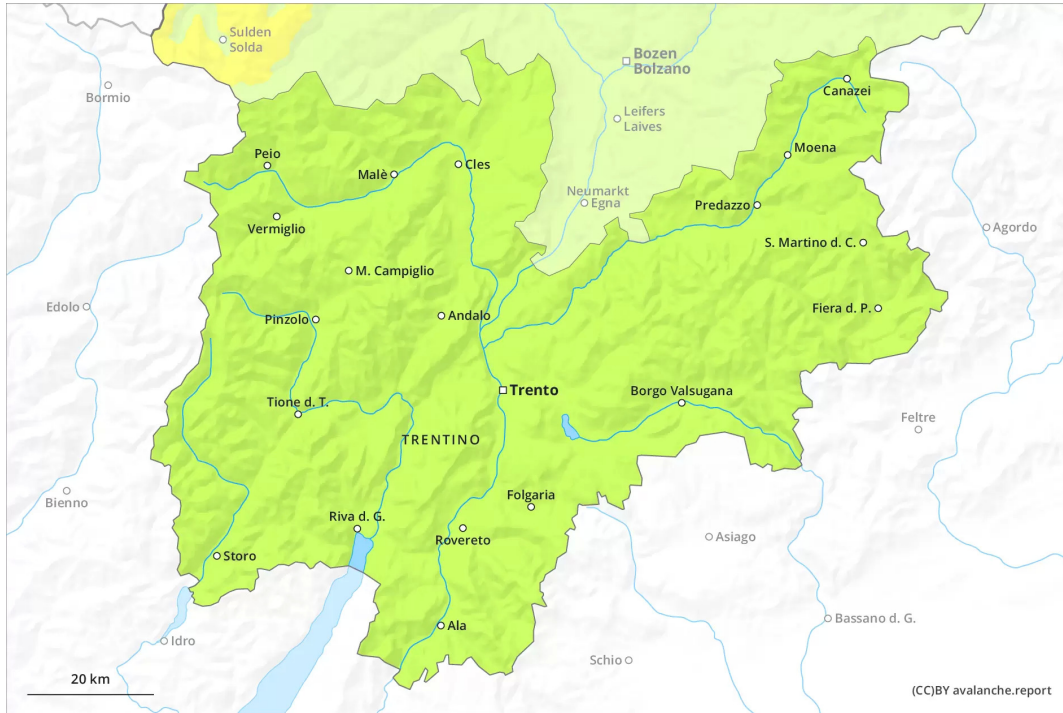
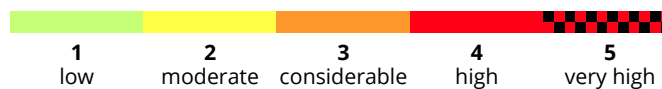
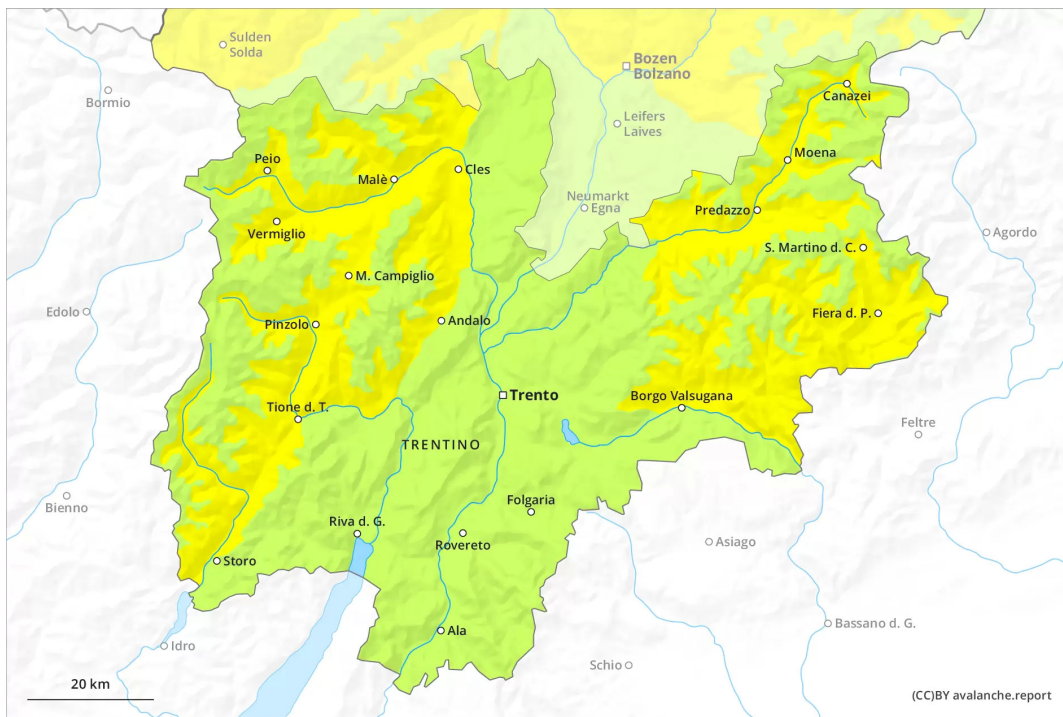




AM



PM



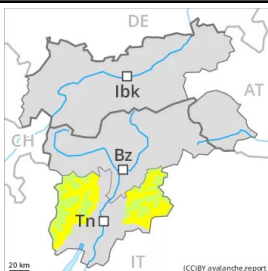
Danger Level 2 - Moderate

AM:



Tendency: Constant avalanche danger →
on Tuesday 12 04 2022

PM:



Tendency: Constant avalanche danger →
on Tuesday 12 04 2022

Wet avalanches as the day progresses.

The early morning will see quite favourable conditions mostly. From midday as a consequence of warming during the day and solar radiation there will be a gradual increase in the danger of wet avalanches. On extremely steep slopes moist snow slides and avalanches are possible. Mostly avalanches are only small. The wind slabs of the weekend are in individual cases still prone to triggering. They are to be evaluated with care and prudence at elevated altitudes. These are clearly recognisable.

Snowpack

Danger patterns

dp.10: springtime scenario

dp.6: cold, loose snow and wind

On Monday it will be very mild. Sunshine and high temperatures will give rise as the day progresses to gradual softening of the snowpack.

The wind slabs have bonded quite well with the old snowpack. They are in some cases still prone to triggering at elevated altitudes. These are mostly only small.

Tendency

The conditions are spring-like. Increase in danger of wet avalanches as a consequence of warming during the day and solar radiation.

Danger Level 1 - Low



Tendency: Constant avalanche danger →
on Tuesday 12 04 2022

As a consequence of the solar radiation, the likelihood of moist and wet avalanches being released will increase gradually in particular on steep shady slopes above approximately 2000 m.

The high temperatures as the day progresses will give rise to increasing moistening of the snowpack in all aspects. These conditions will facilitate a gradual weakening of the near-surface layers as the day progresses in particular on shady slopes. On southeast, south and southwest facing slopes no snow is lying.

Above approximately 1800 m small moist and wet avalanches are possible.

Snowpack

Danger patterns

dp.10: springtime scenario

As a consequence of mild temperatures and solar radiation the snowpack consolidated. The surface of the snowpack is frozen, but not to a significant depth and will already soften in the late morning. The old snowpack remains weakly bonded especially on very steep shady slopes.

Tendency

The conditions are spring-like. Slight increase in danger of moist snow slides as a consequence of warming during the day and solar radiation.