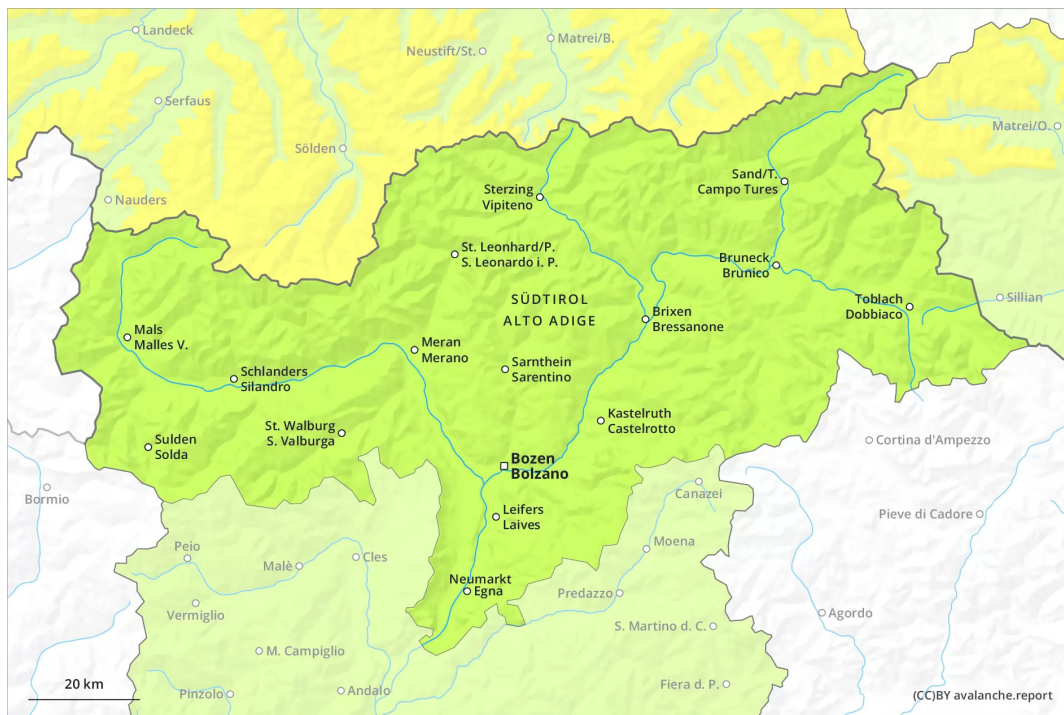
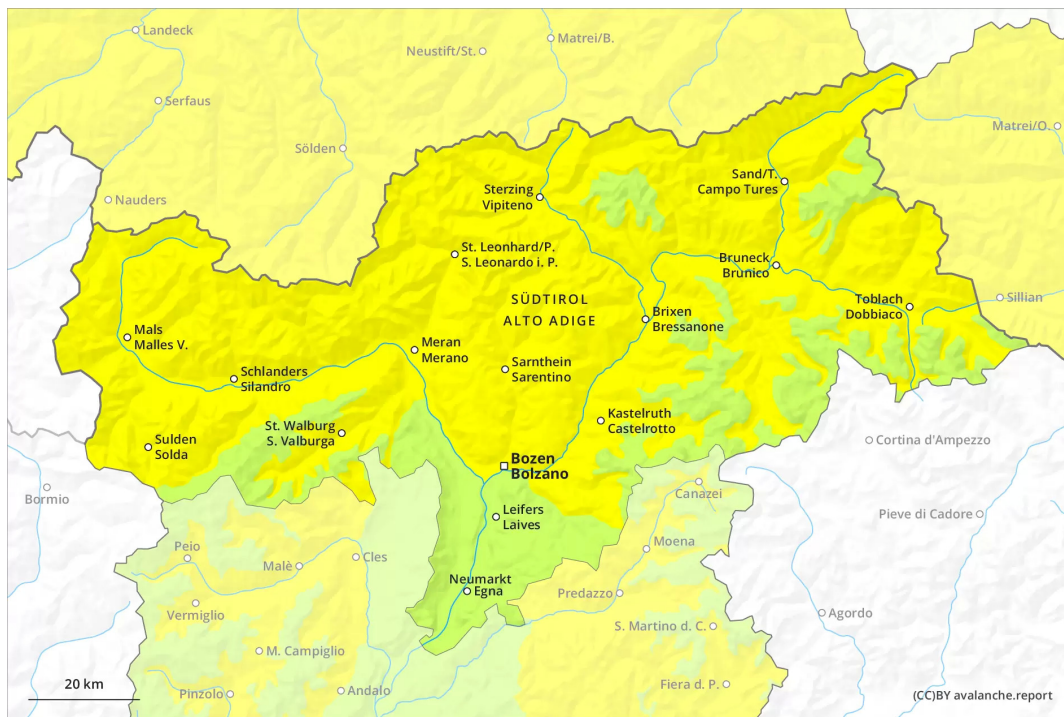




AM

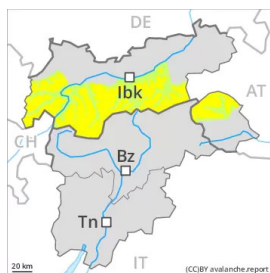


PM



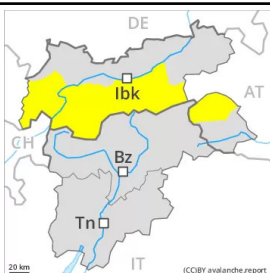
Danger Level 2 - Moderate

AM:



Tendency: Constant avalanche danger
on Wednesday 13 04 2022 →

PM:



Tendency: Constant avalanche danger
on Wednesday 13 04 2022 →

Weak layers in the old snowpack can be released in some places at elevated altitudes. As the day progresses a moderate danger of wet avalanches will prevail.

Weak layers in the upper part of the snowpack necessitate caution. The avalanche prone locations are to be found in particular on shady slopes above approximately 2600 m and on sunny slopes above approximately 2800 m. Avalanches can in some cases be released, even by a single winter sport participant and reach dangerously large size. The avalanche prone locations are barely recognisable, even to the trained eye.

As a consequence of warming during the day and solar radiation there will be an increase in the danger of wet avalanches. This applies in particular on west, south and east facing slopes in all altitude zones, as well as on shady slopes below approximately 2200 m. In addition a certain danger of gliding avalanches exists. This applies in particular on steep grassy slopes in the regions with a lot of snow. Backcountry tours, off-piste skiing and ascents to alpine cabins should be started early and concluded timely.

Snowpack

Danger patterns

dp.4: cold following warm / warm following cold

dp.10: springtime scenario

Avalanche prone weak layers exist in the top section of the snowpack. This applies in particular on steep shady slopes above approximately 2600 m, as well as on steep sunny slopes above approximately 2800 m. Naturally triggered avalanches and reports filed by observers confirm this situation.

On Tuesday it will be very mild. The surface of the snowpack has frozen to form a strong crust and will already soften in the late morning. The spring-like weather conditions as the day progresses will give rise to significant softening of the snowpack. This applies on steep sunny slopes, as well as on shady slopes below



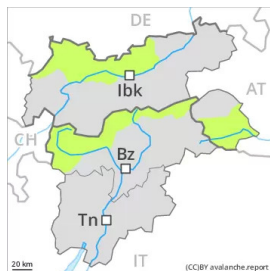
approximately 2200 m. In particular at low and intermediate altitudes only a little snow is now lying.

Tendency

The conditions are spring-like. Increase in danger of wet avalanches as a consequence of warming during the day and solar radiation.

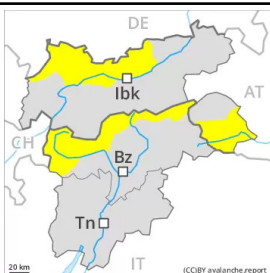
Danger Level 2 - Moderate

AM:



Tendency: Constant avalanche danger
on Wednesday 13 04 2022 →

PM:



Tendency: Constant avalanche danger
on Wednesday 13 04 2022 →

As the day progresses a moderate danger of wet avalanches will prevail.

The early morning will see quite favourable conditions mostly. The somewhat older wind slabs can be released in isolated cases on shady slopes above approximately 2600 m. They are to be avoided in very steep terrain.

As a consequence of warming during the day and solar radiation there will be an increase in the danger of wet avalanches. This applies in particular on west, south and east facing slopes in all altitude zones, as well as on shady slopes below approximately 2200 m. In addition a certain danger of gliding avalanches exists. This applies in particular on steep grassy slopes in the regions with a lot of snow. Backcountry tours, off-piste skiing and ascents to alpine cabins should be started early and concluded timely.

Snowpack

Danger patterns

dp.10: springtime scenario

dp.6: cold, loose snow and wind

The wind slabs have bonded quite well with the old snowpack. They are in individual cases still prone to triggering at elevated altitudes.

On Tuesday it will be very mild. The surface of the snowpack has frozen to form a strong crust and will already soften in the late morning. The spring-like weather conditions as the day progresses will give rise to significant softening of the snowpack. This applies on steep sunny slopes, as well as on shady slopes below approximately 2200 m. In particular at low and intermediate altitudes only a little snow is now lying.

Tendency

The conditions are spring-like. Increase in danger of wet avalanches as a consequence of warming during the day and solar radiation.

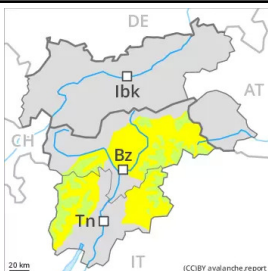
Danger Level 2 - Moderate

AM:



Tendency: Constant avalanche danger
on Wednesday 13 04 2022 →

PM:



Tendency: Constant avalanche danger
on Wednesday 13 04 2022 →

As the day progresses a moderate danger of wet avalanches will prevail.

The early morning will see quite favourable conditions mostly. Individual avalanche prone locations for dry avalanches are to be found in particular on very steep shady slopes above approximately 2800 m and adjacent to ridgelines in all aspects. Older wind slabs in very steep terrain are to be bypassed as far as possible.

As a consequence of warming during the day and solar radiation there will be an increase in the danger of wet avalanches. Small and, in isolated cases, medium-sized wet avalanches are possible. This applies in particular on west, south and east facing slopes below approximately 2800 m, as well as on shady slopes below approximately 2200 m.

Snowpack

Danger patterns

dp.10: springtime scenario

dp.6: cold, loose snow and wind

The wind slabs have bonded quite well with the old snowpack. They are in individual cases still prone to triggering at elevated altitudes.

On Tuesday it will be very mild. The surface of the snowpack has frozen to form a strong crust and will already soften in the late morning. The spring-like weather conditions as the day progresses will give rise to significant softening of the snowpack. This applies on steep sunny slopes below approximately 2600 m, as well as on shady slopes below approximately 2200 m.

Less snow than usual is lying.

Tendency

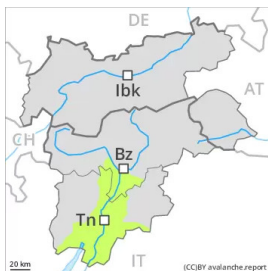
The conditions are spring-like. Increase in danger of wet avalanches as a consequence of warming during



the day and solar radiation.

Danger Level 1 - Low

AM:



Tendency: Constant avalanche danger →
on Wednesday 13 04 2022

PM:



Tendency: Constant avalanche danger →
on Wednesday 13 04 2022

The conditions are spring-like.

Only a little snow is now lying. The early morning will see favourable conditions generally. As a consequence of warming during the day and solar radiation moist snow slides are possible.

Snowpack

Danger patterns

dp.10: springtime scenario

In all aspects as well as in all altitude zones only a little snow is now lying.

The surface of the snowpack has frozen to form a strong crust and will soften earlier than the day before.

The small wind slabs of the weekend have bonded well with the old snowpack.

Tendency

The conditions are spring-like. Slight increase in danger of moist snow slides as a consequence of warming during the day and solar radiation.