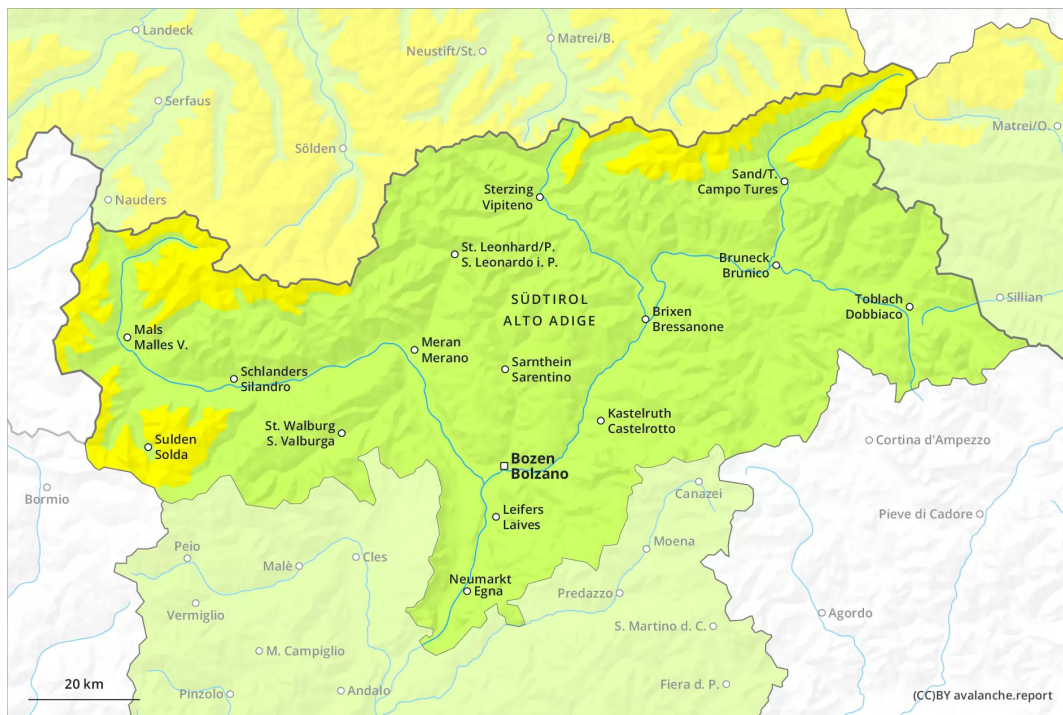
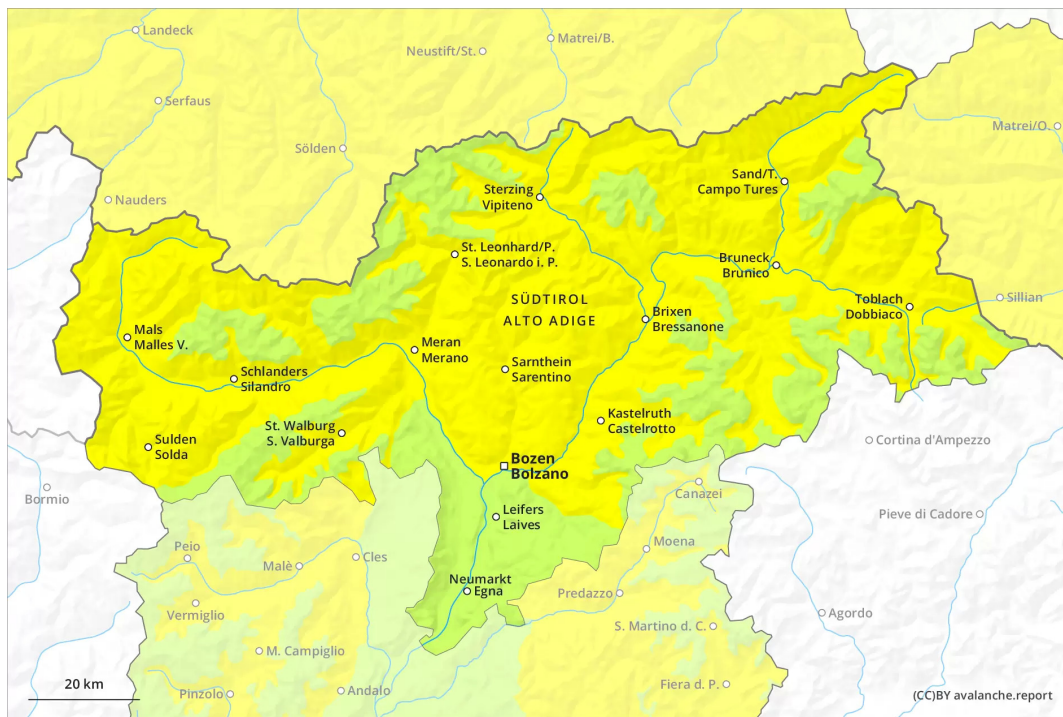




AM

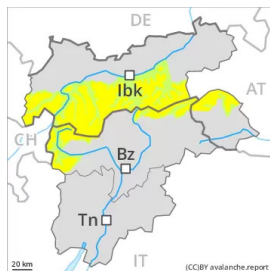


PM

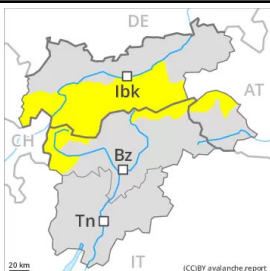




Danger Level 2 - Moderate

AM:

Tendency: Constant avalanche danger →
on Thursday 14 04 2022

PM:

Tendency: Constant avalanche danger →
on Thursday 14 04 2022

Weak layers in the old snowpack can be released in some places at elevated altitudes. As the day progresses a moderate danger of wet avalanches will prevail.

Weak layers in the upper part of the snowpack necessitate caution. Avalanches can in some cases be released, even by a single winter sport participant. The avalanche prone locations are to be found in particular on steep west, north and east facing slopes above approximately 2600 m. The avalanche prone locations are barely recognisable, even to the trained eye.

As a consequence of warming during the day and solar radiation there will be an increase in the danger of wet avalanches. This applies in particular on west, south and east facing slopes. In addition a certain danger of gliding avalanches exists. This applies in particular on steep grassy slopes in the regions with a lot of snow. Backcountry tours, off-piste skiing and ascents to alpine cabins should be started early and concluded timely.

Snowpack

Danger patterns

dp.4: cold following warm / warm following cold

dp.10: springtime scenario

Isolated avalanche prone weak layers exist in the top section of the snowpack. This applies in particular on steep slopes above approximately 2600 m.

On Wednesday it will be very mild. The surface of the snowpack has frozen to form a strong crust and will already soften in the late morning. The spring-like weather conditions as the day progresses will give rise to significant softening of the snowpack.

In particular at low and intermediate altitudes only a little snow is now lying.



Tendency

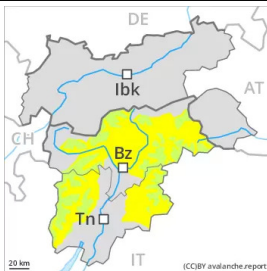
The conditions are spring-like. Increase in danger of wet avalanches as a consequence of warming during the day and solar radiation.



Danger Level 2 - Moderate

AM:**Tendency: Constant avalanche danger** →

on Thursday 14 04 2022

PM:**Tendency: Constant avalanche danger** →

on Thursday 14 04 2022

As the day progresses a moderate danger of wet avalanches will prevail.

The early morning will see quite favourable conditions mostly. Individual avalanche prone locations for dry avalanches are to be found in particular on very steep slopes above approximately 2800 m.

As a consequence of warming during the day and solar radiation there will be an increase in the danger of wet avalanches. Small and, in isolated cases, medium-sized wet avalanches are possible. This applies in particular on west, south and east facing slopes.

Snowpack

Danger patterns

dp.10: springtime scenario

Isolated avalanche prone weak layers exist in the top section of the snowpack at high altitudes and in high Alpine regions.

On Wednesday it will be very mild. The surface of the snowpack has frozen to form a strong crust and will already soften in the late morning. The spring-like weather conditions as the day progresses will give rise to significant softening of the snowpack.

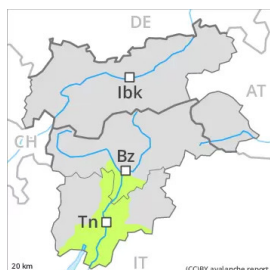
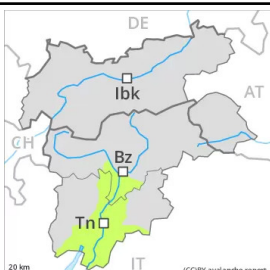
Less snow than usual is lying.

Tendency

The conditions are spring-like. Increase in danger of wet avalanches as a consequence of warming during the day and solar radiation.



Danger Level 1 - Low

AM:**Tendency: Constant avalanche danger** →
on Thursday 14 04 2022**PM:****Tendency: Constant avalanche danger** →
on Thursday 14 04 2022

The conditions are spring-like.

Only a little snow is now lying. The early morning will see favourable conditions generally. As a consequence of warming during the day and solar radiation moist snow slides are possible.

Snowpack

Danger patterns

dp.10: springtime scenario

In all aspects as well as in all altitude zones only a little snow is now lying.

On Wednesday it will be very mild. The surface of the snowpack has frozen to form a strong crust and will already soften in the late morning. The spring-like weather conditions as the day progresses will give rise to significant softening of the snowpack.

Tendency

The conditions are spring-like. Slight increase in danger of moist snow slides as a consequence of warming during the day and solar radiation.