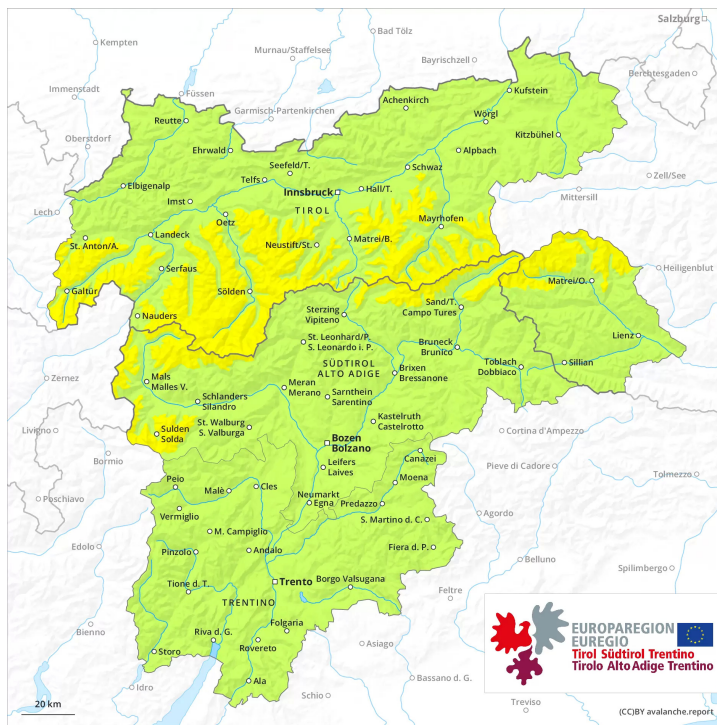
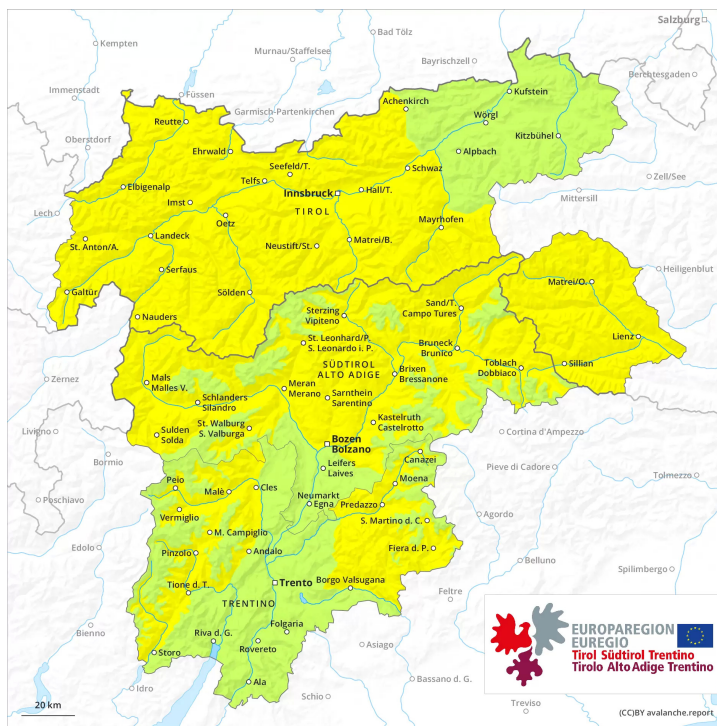




**AM**

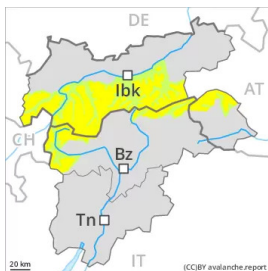


**PM**





## Danger Level 2 - Moderate

**AM:**

**Tendency: Constant avalanche danger** →  
on Thursday 14 04 2022

**PM:**

**Tendency: Constant avalanche danger** →  
on Thursday 14 04 2022

Weak layers in the old snowpack can be released in some places at elevated altitudes. As the day progresses a moderate danger of wet avalanches will prevail.

Weak layers in the upper part of the snowpack necessitate caution. Avalanches can in some cases be released, even by a single winter sport participant. The avalanche prone locations are to be found in particular on steep west, north and east facing slopes above approximately 2600 m. The avalanche prone locations are barely recognisable, even to the trained eye.

As a consequence of warming during the day and solar radiation there will be an increase in the danger of wet avalanches. This applies in particular on west, south and east facing slopes. In addition a certain danger of gliding avalanches exists. This applies in particular on steep grassy slopes in the regions with a lot of snow. Backcountry tours, off-piste skiing and ascents to alpine cabins should be started early and concluded timely.

### Snowpack

**Danger patterns**

dp.4: cold following warm / warm following cold

dp.10: springtime scenario

Isolated avalanche prone weak layers exist in the top section of the snowpack. This applies in particular on steep slopes above approximately 2600 m.

On Wednesday it will be very mild. The surface of the snowpack has frozen to form a strong crust and will already soften in the late morning. The spring-like weather conditions as the day progresses will give rise to significant softening of the snowpack.

In particular at low and intermediate altitudes only a little snow is now lying.

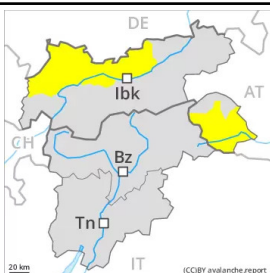


## Tendency

The conditions are spring-like. Increase in danger of wet avalanches as a consequence of warming during the day and solar radiation.



## Danger Level 2 - Moderate

**AM:****Tendency: Constant avalanche danger** →  
on Thursday 14 04 2022**PM:****Tendency: Constant avalanche danger** →  
on Thursday 14 04 2022

As the day progresses a moderate danger of wet avalanches will prevail.

The early morning will see quite favourable conditions mostly. Weak layers in the upper part of the snowpack can be released in isolated cases. Individual avalanche prone locations for dry avalanches are to be found in particular on very steep west, north and east facing slopes above approximately 2600 m.

As a consequence of warming during the day and solar radiation there will be an increase in the danger of wet avalanches. This applies in particular on west, south and east facing slopes in all altitude zones, as well as on shady slopes below approximately 2200 m. In addition a certain danger of gliding avalanches exists. This applies in particular on steep grassy slopes in the regions with a lot of snow. Backcountry tours, off-piste skiing and ascents to alpine cabins should be started early and concluded timely.

## Snowpack

**Danger patterns**

dp.10: springtime scenario

dp.4: cold following warm / warm following cold

Individual weak layers exist in the top section of the snowpack especially on steep west, north and east facing slopes. This applies in particular above approximately 2600 m. Towards its base, the snowpack is well consolidated.

During the night the weather will be partly cloudy. On Wednesday it will be very mild. The surface of the snowpack and will soften earlier than the day before. This applies on steep sunny slopes, as well as on shady slopes below approximately 2200 m. In particular at low and intermediate altitudes only a little snow is now lying.

## Tendency

The conditions are spring-like. Increase in danger of wet avalanches as a consequence of warming during



the day and solar radiation.



## Danger Level 2 - Moderate

**AM:****Tendency: Constant avalanche danger** →

on Thursday 14 04 2022

**PM:****Tendency: Constant avalanche danger** →

on Thursday 14 04 2022

As the day progresses a moderate danger of wet avalanches will prevail.

The early morning will see quite favourable conditions mostly. Individual avalanche prone locations for dry avalanches are to be found in particular on very steep slopes above approximately 2800 m.

As a consequence of warming during the day and solar radiation there will be an increase in the danger of wet avalanches. Small and, in isolated cases, medium-sized wet avalanches are possible. This applies in particular on west, south and east facing slopes.

## Snowpack

**Danger patterns**

dp.10: springtime scenario

Isolated avalanche prone weak layers exist in the top section of the snowpack at high altitudes and in high Alpine regions.

On Wednesday it will be very mild. The surface of the snowpack has frozen to form a strong crust and will already soften in the late morning. The spring-like weather conditions as the day progresses will give rise to significant softening of the snowpack.

Less snow than usual is lying.

## Tendency

The conditions are spring-like. Increase in danger of wet avalanches as a consequence of warming during the day and solar radiation.



## Danger Level 1 - Low

**AM:**



**Tendency: Constant avalanche danger** →

on Thursday 14 04 2022

**PM:**



**Tendency: Constant avalanche danger** →

on Thursday 14 04 2022

Increase in danger of wet and gliding avalanches as a consequence of warming during the day and solar radiation.

Currently there are quite favourable avalanche conditions generally. As the day progresses as a consequence of warming during the day and solar radiation there will be only a slight increase in the danger of wet snow slides. Some small and, in isolated cases, medium-sized wet loose snow avalanches are possible.

In addition the danger of gliding avalanches will increase as the day progresses. Caution is to be exercised in areas with glide cracks.

## Snowpack

**Danger patterns**

dp.10: springtime scenario

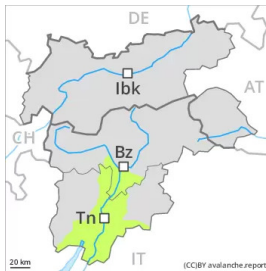
In some regions a partly overcast night. On Tuesday it will be very mild. The surface of the snowpack will soften earlier than the day before. Below the tree line only a little snow is now lying.

## Tendency

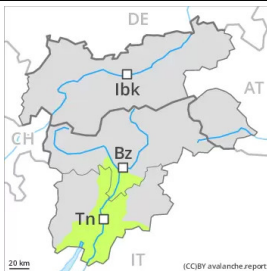
The conditions are spring-like. Increase in danger of wet avalanches as a consequence of warming during the day and solar radiation.



## Danger Level 1 - Low

**AM:****Tendency: Constant avalanche danger** →

on Thursday 14 04 2022

**PM:****Tendency: Constant avalanche danger** →

on Thursday 14 04 2022

The conditions are spring-like.

Only a little snow is now lying. The early morning will see favourable conditions generally. As a consequence of warming during the day and solar radiation moist snow slides are possible.

### Snowpack

**Danger patterns**

dp.10: springtime scenario

In all aspects as well as in all altitude zones only a little snow is now lying.

On Wednesday it will be very mild. The surface of the snowpack has frozen to form a strong crust and will already soften in the late morning. The spring-like weather conditions as the day progresses will give rise to significant softening of the snowpack.

### Tendency

The conditions are spring-like. Slight increase in danger of moist snow slides as a consequence of warming during the day and solar radiation.