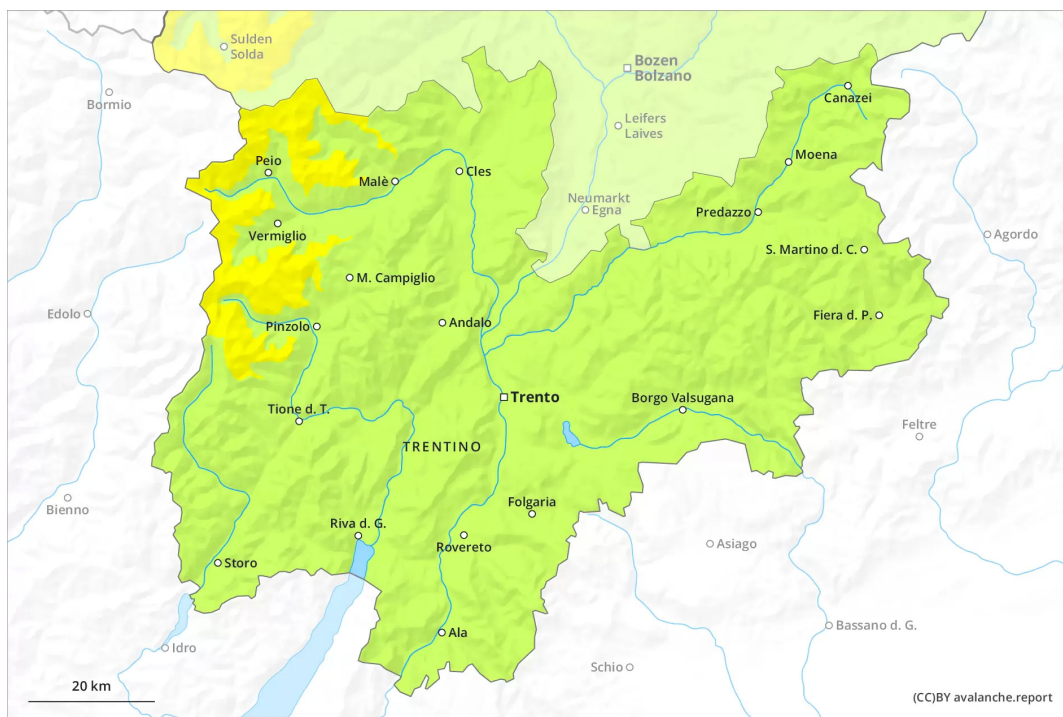
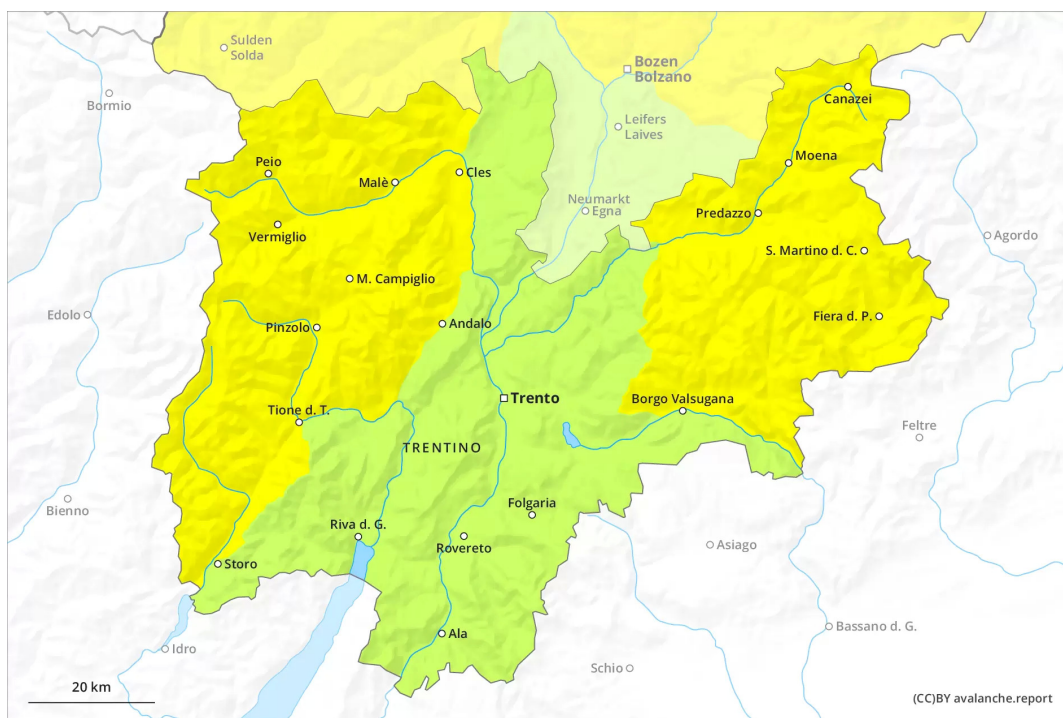




AM

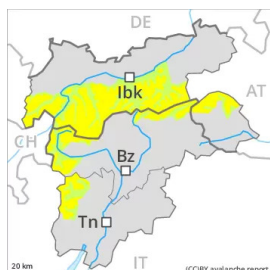


PM



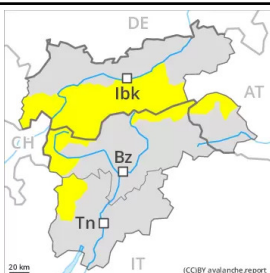
Danger Level 2 - Moderate

AM:



Tendency: Constant avalanche danger
on Friday 15 04 2022 →

PM:



Tendency: Constant avalanche danger
on Friday 15 04 2022 →

Weak layers in the old snowpack can be released in some places at elevated altitudes. As the day progresses a moderate danger of wet avalanches will prevail.

Weak layers in the upper part of the snowpack necessitate caution. Avalanches can in some cases be released, even by a single winter sport participant. The avalanche prone locations are to be found in particular on steep west, north and east facing slopes above approximately 2600 m. The avalanche prone locations are barely recognisable, even to the trained eye.

As a consequence of warming during the day and solar radiation there will be an increase in the danger of wet avalanches. This applies in particular on west, south and east facing slopes in all altitude zones, as well as on shady slopes below approximately 2400 m. In addition a certain danger of gliding avalanches exists. This applies in particular on steep grassy slopes in the regions with a lot of snow.

Backcountry tours, off-piste skiing and ascents to alpine cabins should be started early and concluded timely.

Snowpack

Danger patterns

dp.4: cold following warm / warm following cold

dp.10: springtime scenario

Isolated avalanche prone weak layers exist in the top section of the snowpack. This applies in particular on steep west, north and east facing slopes above approximately 2600 m. Towards its base, the snowpack is well consolidated.

During the night the weather will be partly cloudy. On Thursday it will be very mild. The surface of the snowpack will freeze to form a strong crust only at high altitudes and will already soften in the late



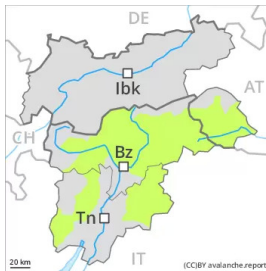
morning. The spring-like weather conditions as the day progresses will give rise to a loss of strength within the snowpack. This applies on steep sunny slopes, as well as on shady slopes below approximately 2400 m. At low and intermediate altitudes only a little snow is now lying.

Tendency

Gradual decrease in danger of wet avalanches as the snowfall level drops.



Danger Level 2 - Moderate

AM:**Tendency: Constant avalanche danger** →
on Friday 15 04 2022**PM:****Tendency: Constant avalanche danger** →
on Friday 15 04 2022

As the day progresses a moderate danger of wet avalanches will prevail.

The early morning will see quite favourable conditions mostly. Individual avalanche prone locations for dry avalanches are to be found in particular on very steep west, north and east facing slopes above approximately 2600 m. This applies in particular in the north.

As a consequence of warming during the day and solar radiation there will be an increase in the danger of wet avalanches. This applies in particular on west, south and east facing slopes in all altitude zones, as well as on shady slopes below approximately 2400 m.

Backcountry tours should be concluded timely.

Snowpack

Danger patterns

dp.10: springtime scenario

dp.4: cold following warm / warm following cold

Individual weak layers exist in the top section of the snowpack on steep west, north and east facing slopes. This applies in particular above approximately 2600 m. Towards its base, the snowpack is well consolidated.

During the night the weather will be partly cloudy. On Thursday it will be very mild. The surface of the snowpack will freeze to form a strong crust only at high altitudes and will already soften in the late morning. The spring-like weather conditions as the day progresses will give rise to a loss of strength within the snowpack. This applies on steep sunny slopes, as well as on shady slopes below approximately 2400 m. Only a little snow is now lying.

Tendency

The conditions remain spring-like. Gradual decrease in danger of wet avalanches as the temperature

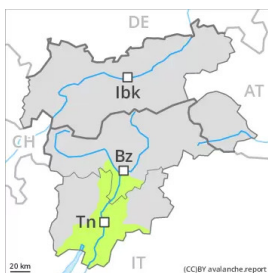


drops.



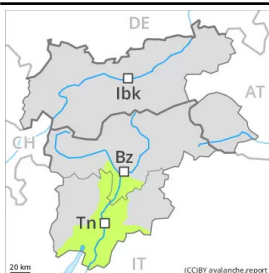
Danger Level 1 - Low

AM:



Tendency: Constant avalanche danger →
on Friday 15 04 2022

PM:



Tendency: Constant avalanche danger →
on Friday 15 04 2022

The conditions are spring-like.

Only a little snow is now lying. The early morning will see favourable conditions generally. As a consequence of warming during the day and solar radiation moist snow slides are possible.

Snowpack

Danger patterns

dp.10: springtime scenario

In all aspects as well as in all altitude zones only a little snow is now lying.

During the night the weather will be partly cloudy. On Thursday it will be very mild. The surface of the snowpack will freeze to form a strong crust only at high altitudes and will already soften in the late morning. The spring-like weather conditions as the day progresses will give rise to significant softening of the snowpack.

Tendency

The conditions are spring-like.