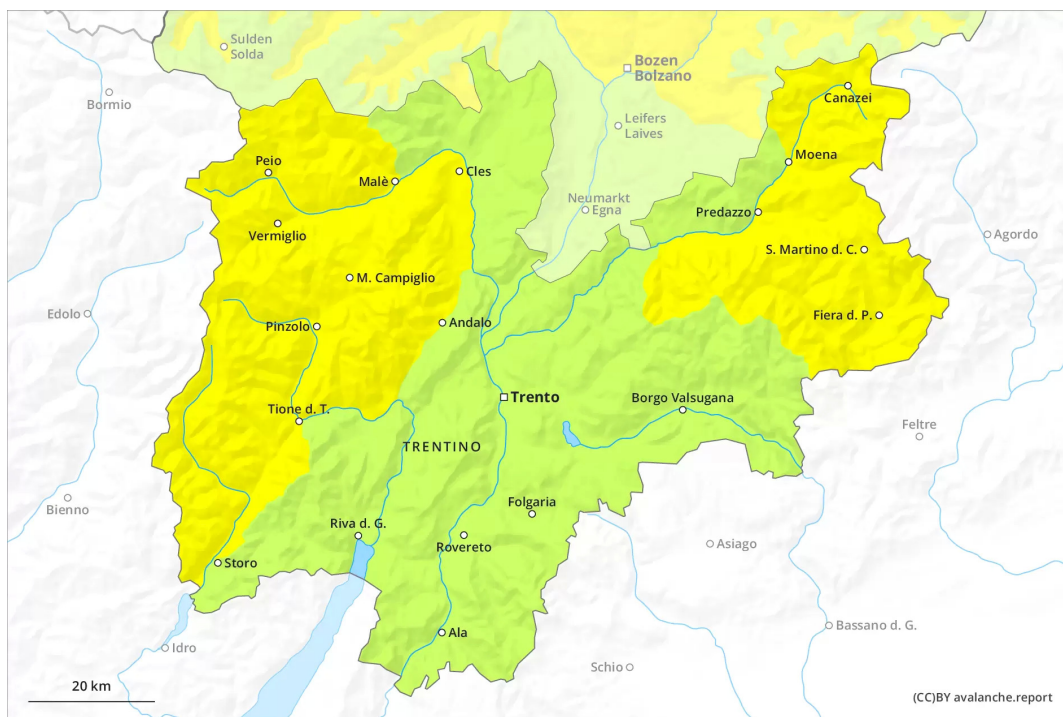
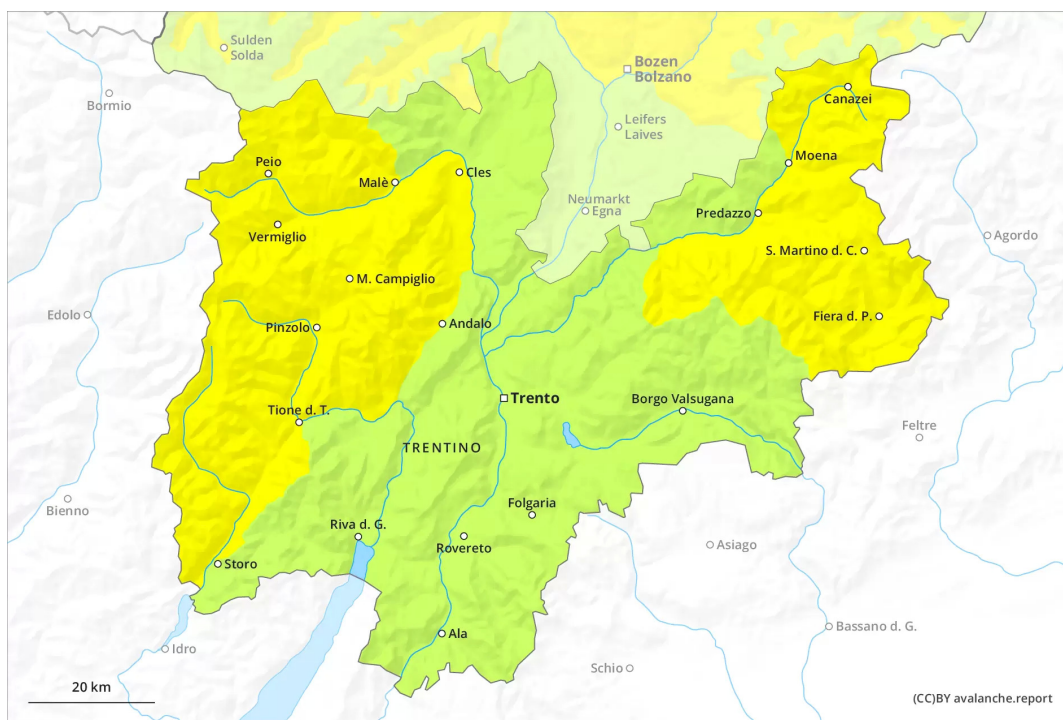




AM



PM



Danger Level 2 - Moderate



Tendency: Constant avalanche danger →
on Saturday 23 04 2022

From late morning a moderate danger of gliding avalanches and wet snow slides will prevail.

The danger of gliding avalanches and wet snow slides will already be elevated in the early morning. This applies especially on very steep slopes below approximately 2500 m. As a consequence of the moist air individual small and medium-sized natural avalanches are possible. As the day progresses the likelihood of avalanches being released will increase a little. As a consequence of new snow and wind small and medium-sized moist loose snow avalanches are possible above approximately 2000 m.

Snowpack

Danger patterns

dp.10: springtime scenario

Above approximately 2000 m snow will fall in some regions. Some rain will fall. This applies below approximately 2000 m. The surface of the snowpack will cool hardly at all during the overcast night and will already be soft in the early morning. The spring-like weather conditions as the day progresses will give rise to gradual softening of the snowpack. This applies in particular below approximately 2500 m. At low and intermediate altitudes from a snow sport perspective, in most cases insufficient snow is lying.

Tendency

Saturday: During the night the weather will be very cloudy. The weather will be mild. The avalanche danger will already be elevated in the early morning. The prevalence of avalanche prone locations and likelihood of triggering will increase as the day progresses.

Danger Level 1 - Low



Tendency: Constant avalanche danger →
on Saturday 23 04 2022

Wet snow slides are possible in isolated cases.

The danger of wet avalanches will already be elevated in the early morning. As the day progresses the likelihood of avalanches being released will increase a little. Individual mostly small wet avalanches are possible. This applies especially on very steep slopes. Restraint should be exercised because avalanches can sweep people along and give rise to falls.

Snowpack

Danger patterns

dp.10: springtime scenario

The surface of the snowpack will cool hardly at all during the overcast night and will already be soft in the early morning. Some rain will fall. This applies below approximately 2000 m. The spring-like weather conditions as the day progresses will give rise to gradual softening of the snowpack.

Only a little snow is now lying.

Tendency

Saturday: During the night the weather will be very cloudy. The weather will be mild. The avalanche danger will already be elevated in the early morning. The prevalence of avalanche prone locations and likelihood of triggering will increase as the day progresses.