

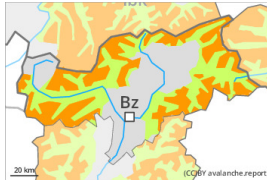


## Danger Level 3 - Considerable



**Tendency: Constant avalanche danger** →

on Thursday 15 12 2022



Wind slab

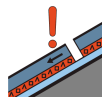


Treeline

Snowpack stability: **very poor**

Frequency: **some**

Avalanche size: **medium**



Persistent weak layer



2000m

Snowpack stability: **very poor**

Frequency: **some**

Avalanche size: **medium**

Fresh wind slabs represent the main danger. Distinct weak layers in the old snowpack are difficult to recognise.

Avalanches can be released by a single winter sport participant. Natural avalanches are possible in isolated cases, in particular on wind-loaded slopes adjacent to ridgelines.

Mostly avalanches are small. On wind-loaded slopes medium-sized avalanches are possible.

The avalanche prone locations are to be found in all aspects above the tree line. Caution is to be exercised in gullies and bowls, and behind abrupt changes in the terrain, as well as adjacent to ridgelines.

Individual gliding avalanches can also occur, in particular in the south.

Whumpfung sounds and the formation of shooting cracks when stepping on the snowpack serve as an alarm indicating the danger. The avalanche prone locations are currently prevalent immediately adjacent to the pistes as well.

## Snowpack

### Danger patterns

dp.6: cold, loose snow and wind

dp.1: deep persistent weak layer

The old snowpack will be unstable over a wide area. The wind slabs of the last few days are lying on top of a weakly bonded old snowpack. This applies on steep shady slopes above approximately 2000 m, as well as on steep sunny slopes above approximately 2500 m. In some places new snow and wind slabs are lying on surface hoar. As a consequence of new snow and a moderate to strong westerly wind, sometimes easily released wind slabs will form. From a snow sport perspective, in most cases insufficient snow is lying.

## Tendency

Slight increase in avalanche danger as a consequence of new snow and strong wind. In particular in the southeast 10 cm of snow, and even more in some localities, will fall on Thursday.



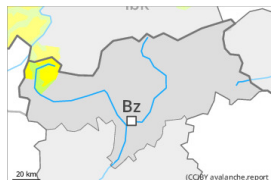
## Danger Level 2 - Moderate



Treeline

**Tendency: Constant avalanche danger** →

on Thursday 15 12 2022



Wind slab



Treeline

Snowpack stability: **very poor**Frequency: **some**Avalanche size: **small**

Persistent weak layer



2000m

Snowpack stability: **poor**Frequency: **some**Avalanche size: **small**

The fresh wind slabs can be released easily. Weak layers in the old snowpack necessitate caution and restraint.

Single winter sport participants can release avalanches, especially on wind-loaded slopes above the tree line. Caution is to be exercised in gullies and bowls, and behind abrupt changes in the terrain, as well as adjacent to ridgelines.

Mostly the avalanches are small.

Whumpfung sounds and the formation of shooting cracks when stepping on the snowpack serve as an alarm indicating the danger. Even a small avalanche can sweep winter sport participants along and give rise to falls.

## Snowpack

### Danger patterns

dp.6: cold, loose snow and wind

dp.1: deep persistent weak layer

New snow and wind slabs are lying on soft layers. The new snow and wind slabs are lying on surface hoar in some places. As a consequence of a moderate to strong westerly wind, easily released wind slabs will form.

The old snowpack will be unstable in some places, especially on steep shady slopes above approximately 2000 m.

In particular in the northwest 5 to 10 cm of snow will fall. A little snow is lying.

## Tendency

Fresh wind slabs represent the main danger.



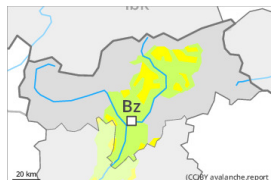
## Danger Level 2 - Moderate



Treeline

**Tendency: Constant avalanche danger** →

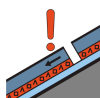
on Thursday 15 12 2022



Wind slab



Treeline

Snowpack stability: **very poor**Frequency: **some**Avalanche size: **small**

Persistent weak layer



2000m

Snowpack stability: **poor**Frequency: **some**Avalanche size: **small**

The fresh wind slabs can be released easily. Weak layers in the old snowpack necessitate caution and restraint.

Single winter sport participants can release avalanches, especially on wind-loaded slopes above the tree line. Caution is to be exercised in gullies and bowls, and behind abrupt changes in the terrain, as well as adjacent to ridgelines.

Mostly the avalanches are small.

Whumpfung sounds and the formation of shooting cracks when stepping on the snowpack serve as an alarm indicating the danger. Even a small avalanche can sweep winter sport participants along and give rise to falls.

### Snowpack

#### Danger patterns

dp.6: cold, loose snow and wind

dp.1: deep persistent weak layer

New snow and wind slabs are lying on soft layers. The new snow and wind slabs are lying on surface hoar in some places. As a consequence of a moderate to strong westerly wind, easily released wind slabs will form.

The old snowpack will be unstable in some places, especially on steep shady slopes above approximately 2000 m.

A little snow is lying.

### Tendency

Fresh wind slabs represent the main danger. Slight increase in avalanche danger as a consequence of new snow and strong wind. 10 cm of snow, and even more in some localities, will fall on Thursday.