



Danger Level 3 - Considerable



Treeline

Tendency: Constant avalanche danger →

on Thursday 19 01 2023



Wind slab



Treeline

Snowpack stability: **poor**Frequency: **many**Avalanche size: **medium**

Persistent weak layer



2200m

Snowpack stability: **poor**Frequency: **some**Avalanche size: **medium**

Fresh wind slabs require caution. Weakly bonded old snow above approximately 2200 m.

The new snow and wind slabs of the last few days can be released easily, even by a single winter sport participant,. Mostly avalanches are medium-sized. The avalanche prone locations are to be found in all aspects above the tree line.

Additionally avalanches can also be released in the old snowpack. These avalanche prone locations are to be found on steep, little used shady slopes above approximately 2200 m and on steep sunny slopes above approximately 2500 m. They are covered with new snow and are difficult to recognise. Whumpung sounds and the formation of shooting cracks when stepping on the snowpack indicate the danger.

In steep rocky terrain mostly small dry loose snow avalanches are possible. Gliding avalanches are possible in isolated cases, in the regions exposed to a lot of new snow in particular on steep grassy slopes. Experience in the assessment of avalanche danger is recommended.

Snowpack

Danger patterns

dp.6: cold, loose snow and wind

dp.1: deep persistent weak layer

In some regions up to 20 cm of snow has fallen since Sunday. In the northwest less snow fell. The fresh snow and the wind slabs formed by the sometimes strong wind are lying on the unfavourable surface of an old snowpack.

5 to 15 cm of snow, and even more in some localities, will fall until midday.

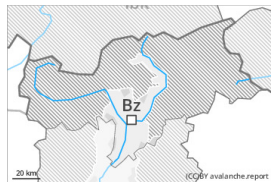
Faceted weak layers exist in the old snowpack, especially on shady slopes above approximately 2200 m, as well as on sunny slopes above approximately 2500 m.

Tendency

Some snow will fall in some regions. As a consequence of low temperatures and the moderate to strong northerly wind, the snowpack can not consolidate on Thursday. The avalanche danger will persist.



Danger Level 2 - Moderate



Tendency: Decreasing avalanche danger
on Thursday 19 01 2023



Wind slab



Treeline

Snowpack stability: **poor**

Frequency: **some**

Avalanche size: **small**

Fresh wind slabs require caution.

The new snow and wind slabs of the last few days can be released by a single winter sport participant. Mostly the avalanches are only small. The avalanche prone locations are to be found in particular in steep terrain and in gullies and bowls.

Avalanches can additionally be released in the old snowpack in isolated cases. These avalanche prone locations are rather rare but are barely recognisable.

Meticulous route selection is recommended.

Snowpack

Danger patterns

dp.6: cold, loose snow and wind

In some regions 10 cm of snow, and even more in some localities, will fall until Tuesday. In the south less snow fell. The fresh snow and the mostly small wind slabs formed by the moderate to strong wind are lying on the unfavourable surface of an old snowpack.

5 to 10 cm of snow will fall on Wednesday.

Isolated avalanche prone weak layers exist in the old snowpack, especially on steep, little used shady slopes.

Tendency

On Thursday it will be sunny at times. The wind will be light to moderate. The avalanche danger will decrease gradually.