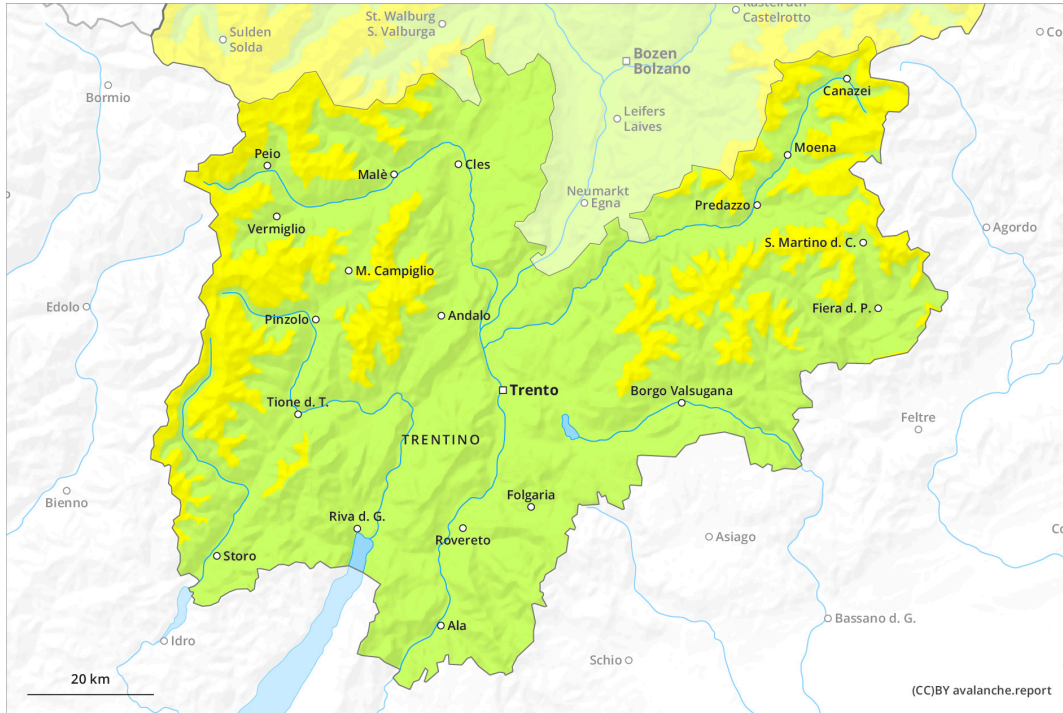
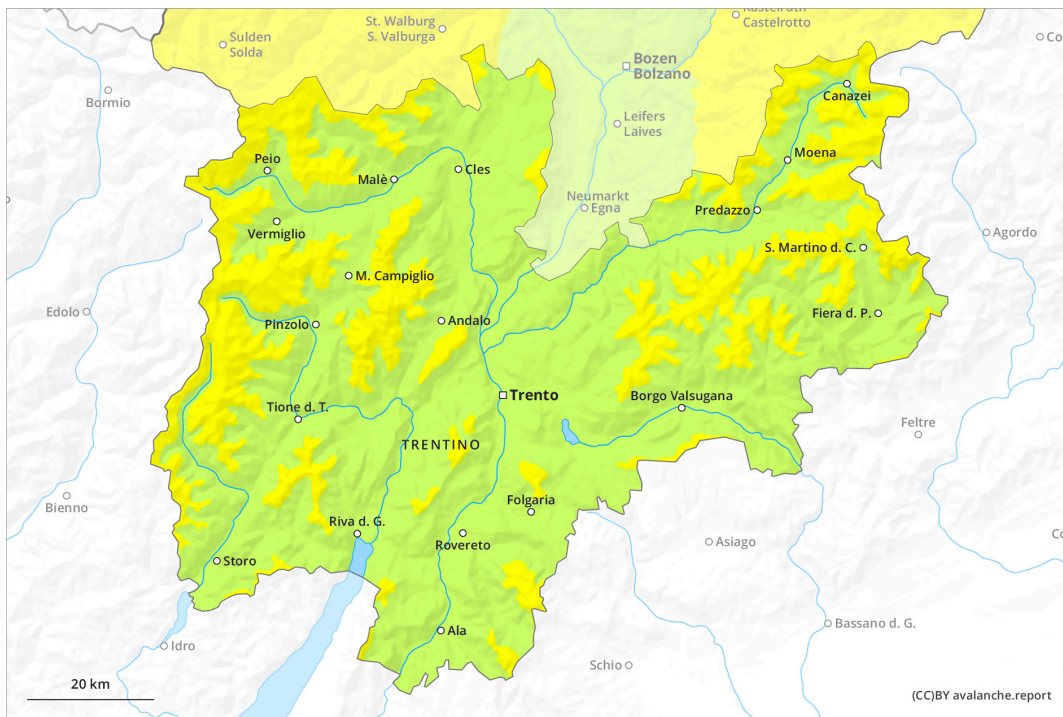




AM

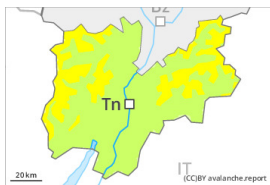


PM

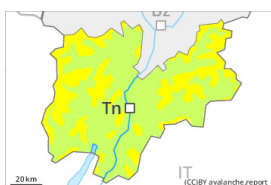




Danger Level 2 - Moderate

AM:**Tendency: Constant avalanche danger** →
on Thursday 16 02 2023Persistent
weak layer

2200m

Snowpack stability: **poor**Frequency: **few**Avalanche size: **medium****PM:****Tendency: Constant avalanche danger** →
on Thursday 16 02 2023

Wet snow



Treeline

Snowpack stability: **poor**Frequency: **some**Avalanche size: **medium**Persistent
weak layer

2200m

Snowpack stability: **poor**Frequency: **few**Avalanche size: **medium**

Increase in danger of moist avalanches as a consequence of warming during the day. Weakly bonded old snow is to be evaluated with care and prudence.

Weak layers in the old snowpack can be released in some places by individual winter sport participants. At transitions from a shallow to a deep snowpack, when entering gullies and bowls for example the likelihood of avalanches being released is greater. The avalanche prone locations are to be found in all aspects above approximately 2200 m. In isolated cases avalanches are medium-sized.

As a consequence of warming, the likelihood of moist snow slides during the day being released will increase in particular on steep sunny slopes above approximately 2200 m. Backcountry touring calls for meticulous route selection.

Snowpack

The old snowpack remains prone to triggering in some places. Faceted weak layers exist in the snowpack, especially on shady slopes above approximately 2200 m, as well as on sunny slopes above approximately 2500 m.

Sunshine and high temperatures will give rise as the day progresses to softening of the snowpack in particular on sunny slopes.

Above the tree line snow depths vary greatly, depending on the influence of the wind. The somewhat older wind slabs are lying on unfavourable layers in particular on wind-protected shady slopes.

In particular at low and intermediate altitudes less snow than usual is lying.



Tendency

As a consequence of warming during the day the prevalence of the avalanche prone locations will increase as the day progresses. Mostly small moist snow slides are possible as the day progresses.