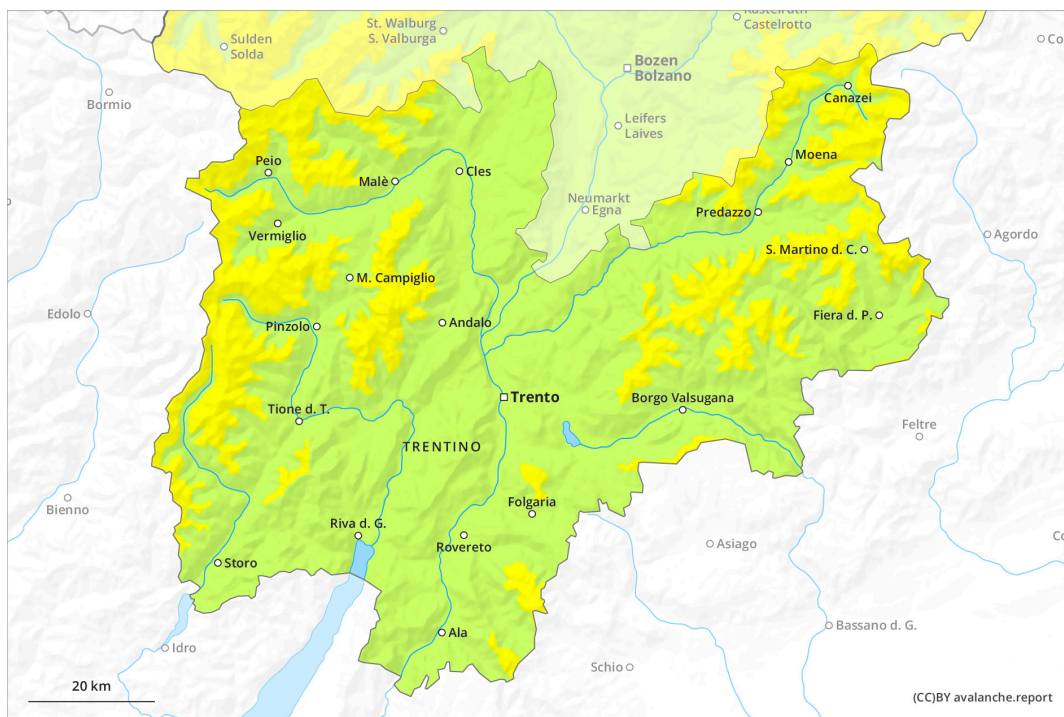
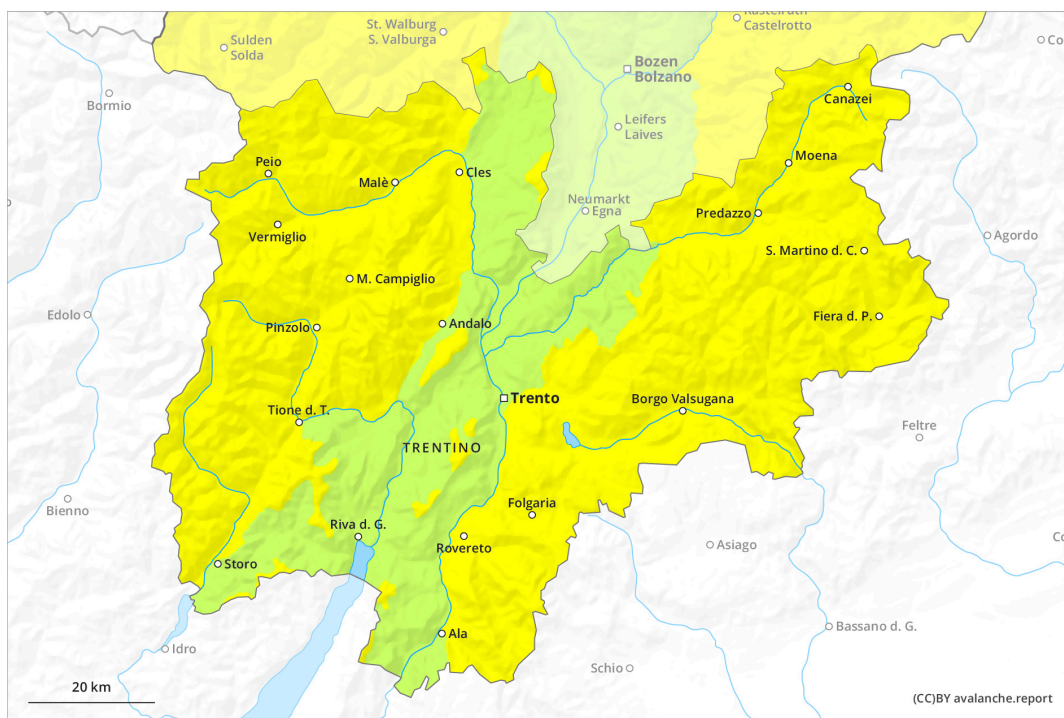




# AM

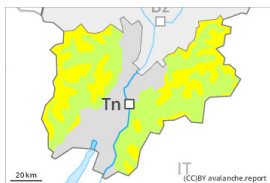


# PM



## Danger Level 2 - Moderate

**AM:**



**Tendency: Constant avalanche danger** →  
 on Friday 17 02 2023

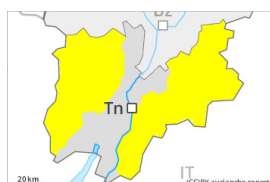


Persistent weak layer



Snowpack stability: **poor**  
 Frequency: **few**  
 Avalanche size: **medium**

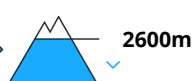
**PM:**



**Tendency: Constant avalanche danger** →  
 on Friday 17 02 2023



Wet snow



Snowpack stability: **poor**  
 Frequency: **some**  
 Avalanche size: **medium**



Persistent weak layer



Snowpack stability: **poor**  
 Frequency: **few**  
 Avalanche size: **medium**

Increase in danger of moist avalanches as a consequence of warming during the day.

Weak layers in the old snowpack can be released in some places by individual winter sport participants. At transitions from a shallow to a deep snowpack, when entering gullies and bowls for example the likelihood of avalanches being released is greater. The avalanche prone locations are to be found in all aspects above approximately 2000 m. In isolated cases avalanches are medium-sized.

As a consequence of warming, the likelihood of wet snow slides and avalanches being released will increase in particular on steep sunny slopes below approximately 2600 m.

### Snowpack

The old snowpack remains prone to triggering in some places. Faceted weak layers exist in the snowpack, especially on shady slopes above approximately 2000 m, as well as on sunny slopes above approximately 2500 m.

Sunshine and high temperatures will give rise as the day progresses to softening of the snowpack in particular on sunny slopes.

Above the tree line snow depths vary greatly, depending on the influence of the wind. The somewhat older wind slabs are lying on unfavourable layers in particular on wind-protected shady slopes.

In particular at low and intermediate altitudes less snow than usual is lying.

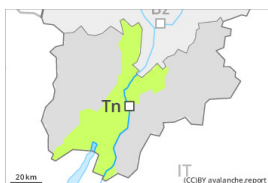
### Tendency



More mostly small moist snow slides are possible as the day progresses.

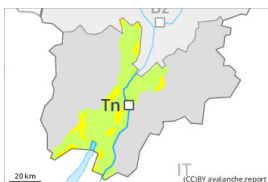
## Danger Level 2 - Moderate

**AM:**



**Tendency: Constant avalanche danger** →  
on Friday 17 02 2023

**PM:**



**Tendency: Constant avalanche danger** →  
on Friday 17 02 2023



Wet snow



**Treeline**

Snowpack stability: **poor**

Frequency: **some**

Avalanche size: **small**

### Low avalanche danger will prevail.

The backcountry touring conditions are generally favourable. Individual avalanche prone locations are to be found in particular in extremely steep terrain. They are very rare and are easy to recognise. Restraint should be exercised because avalanches can sweep people along and give rise to falls.

On steep sunny slopes individual wet snow slides are possible as the day progresses.

### Snowpack

The snowpack will be generally well bonded. Only a small amount of snow is lying for the time of year. The high temperatures as the day progresses will give rise to softening of the snowpack in particular on steep sunny slopes.

### Tendency

As the day progresses as a consequence of warming there will be an increase in the danger of wet avalanches.