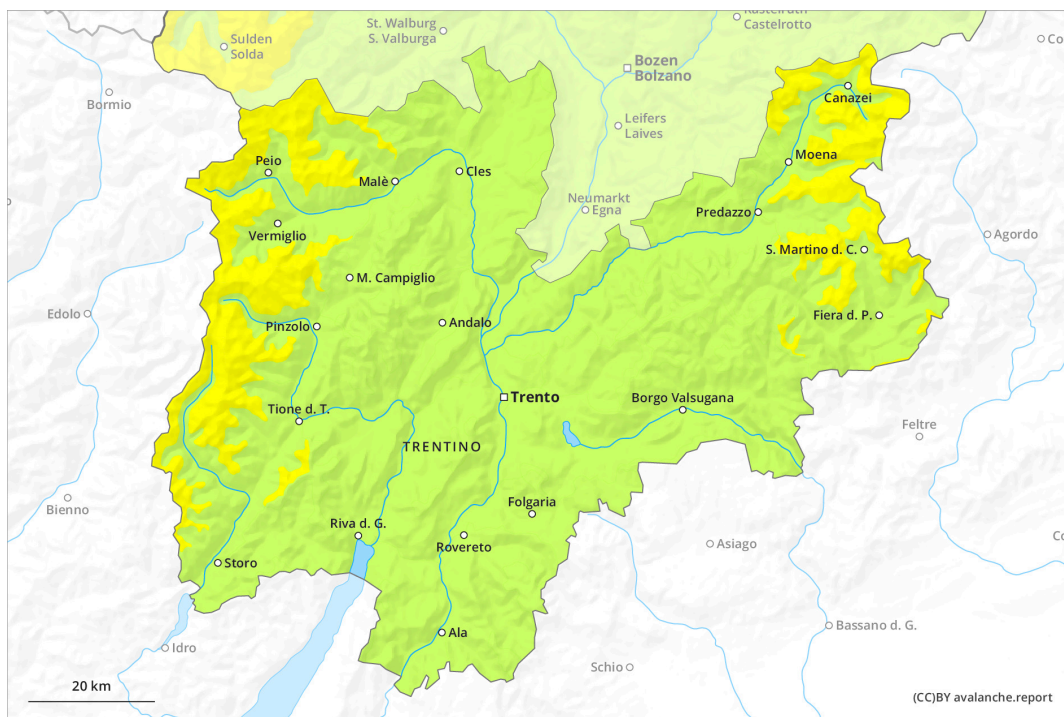
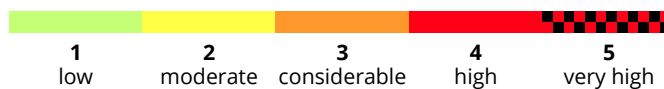
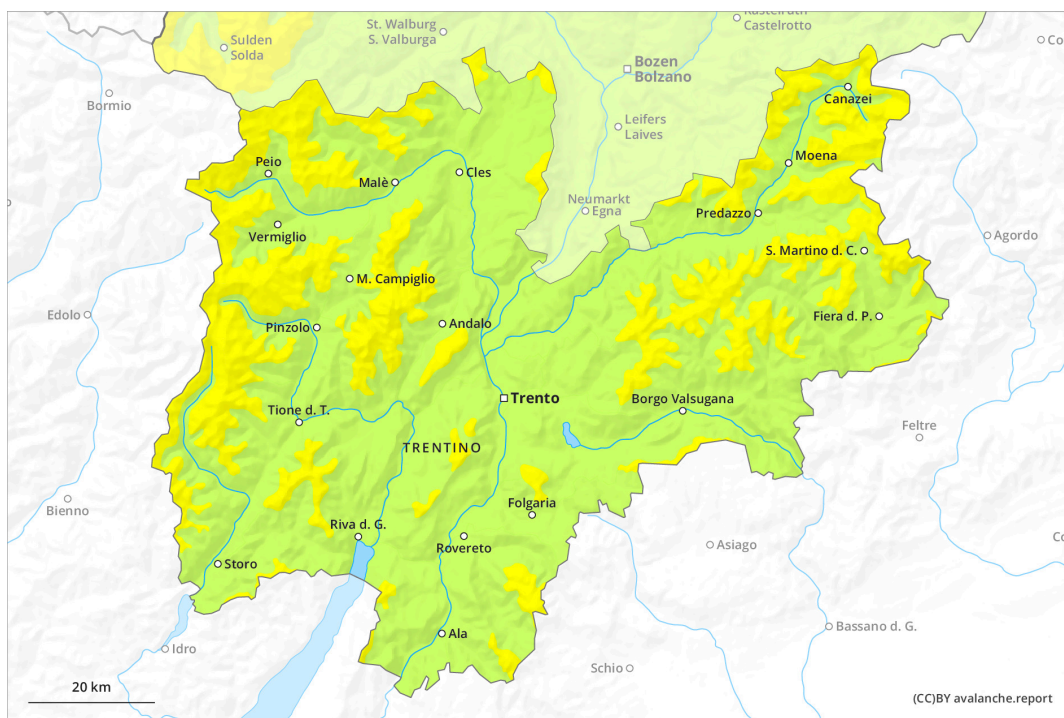




# AM

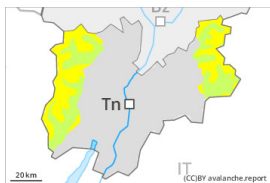


# PM



## Danger Level 2 - Moderate

**AM:**



**Tendency: Constant avalanche danger** →  
 on Monday 20 02 2023

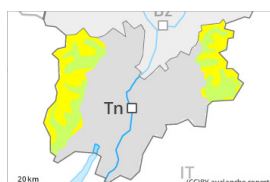


Persistent weak layer



Snowpack stability: **poor**  
 Frequency: **few**  
 Avalanche size: **medium**

**PM:**



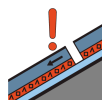
**Tendency: Constant avalanche danger** →  
 on Monday 20 02 2023



Wet snow



Snowpack stability: **poor**  
 Frequency: **few**  
 Avalanche size: **medium**



Persistent weak layer



Snowpack stability: **poor**  
 Frequency: **some**  
 Avalanche size: **medium**

### Weakly bonded old snow and wet snow require caution.

The early morning will see quite favourable conditions generally.

Weak layers in the old snowpack can still be released in some places by individual winter sport participants, especially at transitions from a shallow to a deep snowpack, when entering gullies and bowls for example, as well as in little used backcountry terrain. The avalanche prone locations are rare but are difficult to recognise. Mostly avalanches are medium-sized. On very steep sunny slopes small and medium-sized moist and wet avalanches are possible as a consequence of warming during the day. Backcountry tours should be concluded before midday.

### Snowpack

The snowpack will be quite well bonded. Isolated avalanche prone weak layers exist in the snowpack, especially on shady slopes above approximately 2200 m.

On Saturday the wind will be strong in the vicinity of peaks. The wind will transport only a little snow. The weather will be mild. The surface of the snowpack is frozen, but not to a significant depth and will soften during the day.

At intermediate altitudes only a small amount of snow is lying for the time of year.

### Tendency

On Sunday the wind will be strong adjacent to ridgelines in some regions.



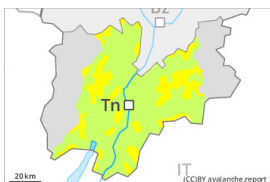
Increase in danger of moist avalanches in the course of the day.

## Danger Level 2 - Moderate

AM:



PM:



Wet snow



Treeline

Snowpack stability: **poor**

Frequency: **some**

Avalanche size: **medium**

The early morning will see favourable conditions mostly, but the danger of wet avalanches will increase later.

On very steep sunny slopes small to medium-sized wet avalanches are possible as a consequence of warming during the day. Backcountry tours should be concluded timely.

Individual avalanche prone locations for dry avalanches are to be found in particular on extremely steep shady slopes and at transitions from a shallow to a deep snowpack. These places are very rare and are difficult to recognise. In steep terrain there is a danger of falling on the hard snow surface.

### Snowpack

The snowpack is favourably layered and its surface has a melt-freeze crust that is barely capable of bearing a load, in particular on steep sunny slopes. Sunshine and high temperatures will give rise as the day progresses to gradual moistening of the snowpack.

Faceted weak layers exist in the centre of the snowpack, especially on shady slopes above approximately 2200 m. The snowpack will be subject to considerable local variations above the tree line. In all regions only a small amount of snow is lying for the time of year.

On Saturday the wind will be strong in the vicinity of peaks over a wide area. The wind will transport only a little snow.

### Tendency

On Sunday the wind will be strong adjacent to ridgelines in some regions.

Increase in danger of moist avalanches in the course of the day.