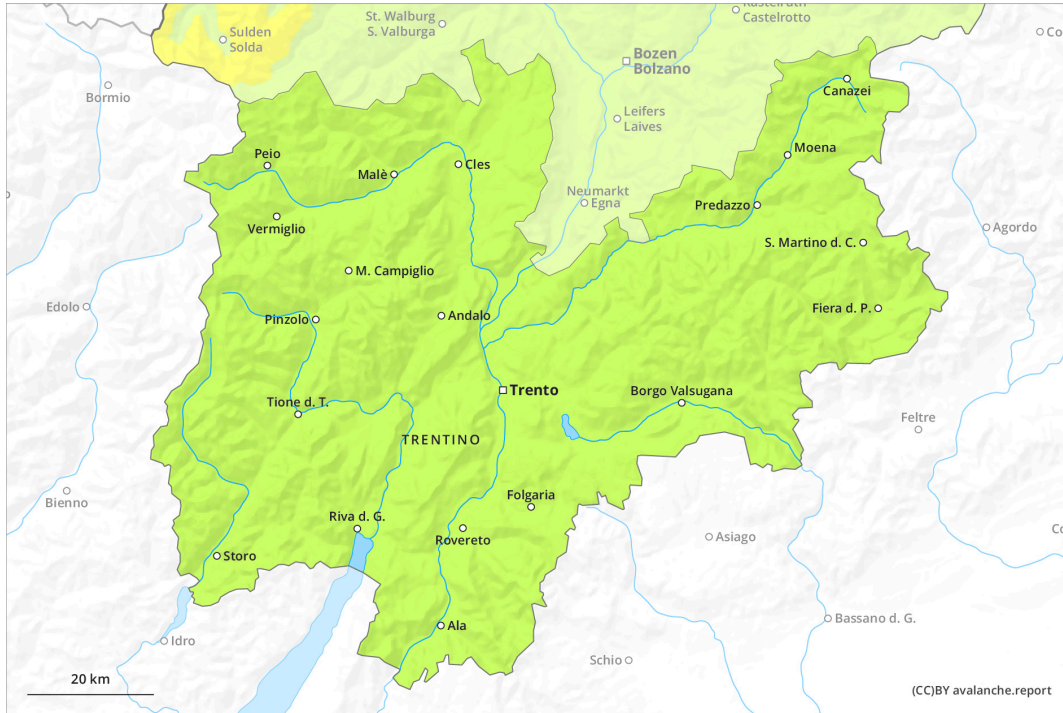
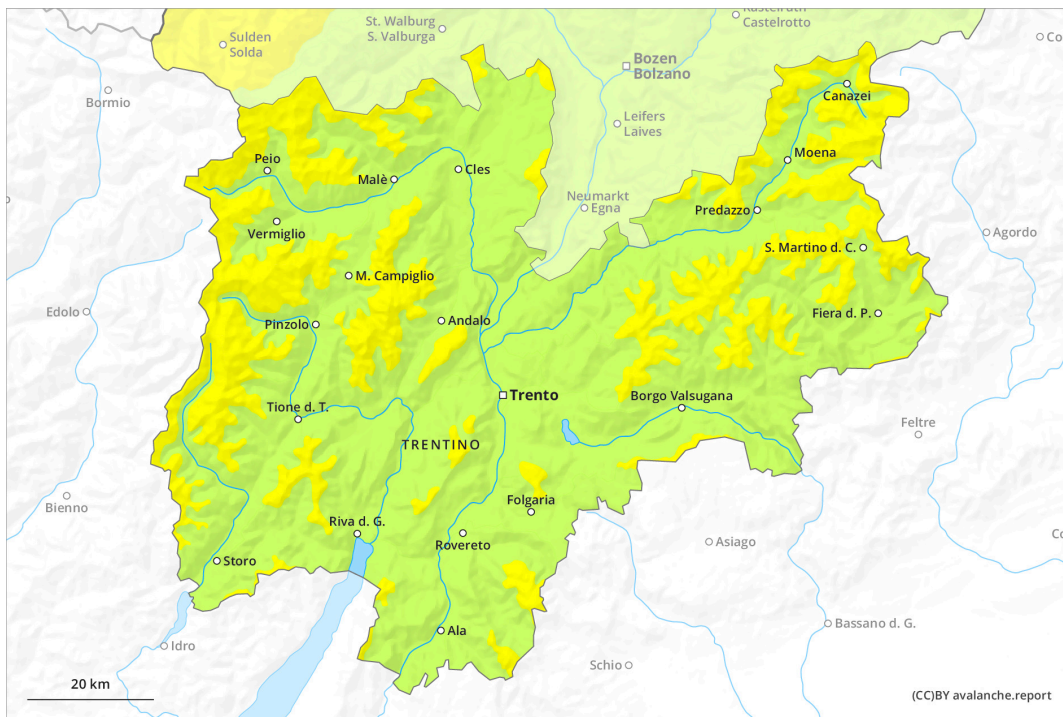




AM



PM



Danger Level 2 - Moderate

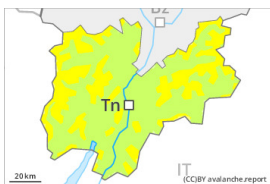
AM:



Tendency: Decreasing avalanche danger
 on Wednesday 22 02 2023



PM:



Tendency: Decreasing avalanche danger
 on Wednesday 22 02 2023



Wet snow



Treeline

Snowpack stability: **poor**

Frequency: **some**

Avalanche size: **medium**

The early morning will see favourable conditions mostly, but the danger of wet avalanches will increase later.

On very steep sunny slopes small to medium-sized wet avalanches are possible as a consequence of warming during the day. Backcountry tours should be concluded before midday.

Individual avalanche prone locations for dry avalanches are to be found in particular on extremely steep shady slopes and at transitions from a shallow to a deep snowpack. In steep terrain there is a danger of falling on the icy crust.

Snowpack

The snowpack is favourably layered and its surface has a crust that is strong in many cases, in particular on steep sunny slopes. Sunshine and high temperatures will give rise as the day progresses to moistening of the snowpack.

Faceted weak layers exist in the centre of the snowpack, especially on shady slopes above approximately 2200 m. The snowpack will be subject to considerable local variations above the tree line. In all regions only a small amount of snow is lying for the time of year.

In the last three days the wind was strong in the vicinity of peaks over a wide area. The wind has transported only a little snow.

Tendency

Wednesday: Decrease in danger of moist avalanches.