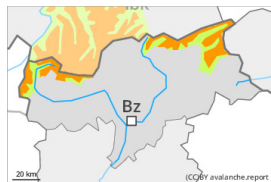




## Danger Level 3 - Considerable



**Tendency: Decreasing avalanche danger**  
on Thursday 30 03 2023



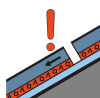
Wind slab



Snowpack stability: **very poor**

Frequency: **some**

Avalanche size: **large**



Persistent weak layer



Snowpack stability: **poor**

Frequency: **few**

Avalanche size: **medium**

Fresh wind slabs represent the main danger. Weakly bonded old snow requires caution.

The fresh wind slabs can be released easily, even by a single winter sport participant,. The avalanche prone locations are to be found in particular on steep west, north and east facing slopes above approximately 2000 m. Caution is to be exercised in gullies and bowls, and behind abrupt changes in the terrain. At elevated altitudes the avalanche prone locations are more prevalent. As a consequence of warming, the likelihood of slab avalanches being released will increase. These can in some cases release deeper layers of the snowpack and reach large size.

Dry avalanches can additionally in some places be released in the weakly bonded old snow also, especially on very steep shady slopes above approximately 2400 m.

As a consequence of warming, the likelihood of wet and gliding avalanches being released will increase. Careful route selection is recommended.

## Snowpack

### Danger patterns

dp.6: cold, loose snow and wind

dp.1: deep persistent weak layer

Over a wide area 20 to 30 cm of snow, and even more in some localities, has fallen. As a consequence of the strong to storm force northwesterly wind, snow drift accumulations formed during the last few days. In some cases the various wind slabs have bonded poorly together. As a consequence of the strong wind the wind slabs will increase in size additionally on Wednesday.

Faceted weak layers exist in the old snowpack, especially on shady slopes above approximately 2400 m. Whumpung sounds and the formation of shooting cracks when stepping on the snowpack indicate poor snowpack stability.

The high temperatures as the day progresses will give rise to gradual and thorough wetting of the snowpack in particular below the tree line.

## Tendency



On Thursday it will be mild. As a consequence of mild temperatures the snow drift accumulations will stabilise.

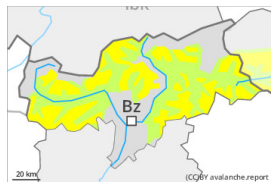
These spring-like weather conditions will give rise to rapid softening of the snowpack in particular at low and intermediate altitudes. Some snow will fall from the afternoon in some regions.



## Danger Level 2 - Moderate



**Tendency: Constant avalanche danger** →  
on Thursday 30 03 2023



Wind slab



Snowpack stability: **poor**

Frequency: **some**

Avalanche size: **medium**



Persistent  
weak layer



Snowpack stability: **poor**

Frequency: **few**

Avalanche size: **medium**

Fresh wind slabs represent the main danger. Weakly bonded old snow is to be evaluated with care and prudence.

The wind slabs of the last few days can be released by a single winter sport participant in some cases. They are to be evaluated with care and prudence in particular in very steep terrain. The avalanche prone locations are to be found in particular adjacent to ridgelines and in gullies and bowls above approximately 2200 m. At elevated altitudes the avalanche prone locations are more prevalent. As a consequence of warming, the likelihood of slab avalanches being released will increase. Avalanches can reach medium size. Dry avalanches can additionally in isolated cases be released in the weakly bonded old snow also, especially on very steep shady slopes above approximately 2400 m.

As the day progresses the likelihood of wet avalanches being released will increase in particular on steep sunny slopes.

### Snowpack

#### Danger patterns

dp.6: cold, loose snow and wind

dp.1: deep persistent weak layer

As a consequence of the strong to storm force northwesterly wind, snow drift accumulations formed during the last few days. In some cases the various wind slabs have bonded poorly together. As a consequence of the strong wind the wind slabs will increase in size additionally on Wednesday. Faceted weak layers exist in the old snowpack, especially on steep shady slopes above approximately 2400 m.

Sunshine and high temperatures will give rise as the day progresses to gradual moistening of the snowpack in particular on sunny slopes.

### Tendency

On Thursday it will be mild. The wind slabs remain in some cases prone to triggering in particular on shady slopes.

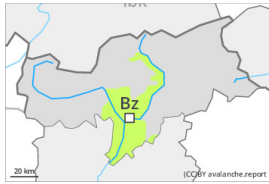
These spring-like weather conditions will give rise to rapid softening of the snowpack in particular at low



and intermediate altitudes.



## Danger Level 1 - Low



**Tendency: Constant avalanche danger** →  
on Thursday 30 03 2023

### Low avalanche danger will prevail.

Fresh wind slabs are very small and can only be released in isolated cases. Individual avalanche prone locations are to be found on extremely steep slopes at elevated altitudes. These places are very rare and are clearly recognisable to the trained eye.

As the day progresses the likelihood of wet avalanches being released will increase gradually in particular on sunny slopes.

### Snowpack

The wind will be strong to storm force over a wide area. The snowpack is largely stable and its surface has a melt-freeze crust that is strong in many cases. The small wind slabs are now only very rarely prone to triggering.

Sunshine and high temperatures will give rise as the day progresses to gradual moistening of the snowpack.

From a snow sport perspective, in most cases insufficient snow is lying.

### Tendency

Further warming. On Thursday the likelihood of wet avalanches being released will increase a little.