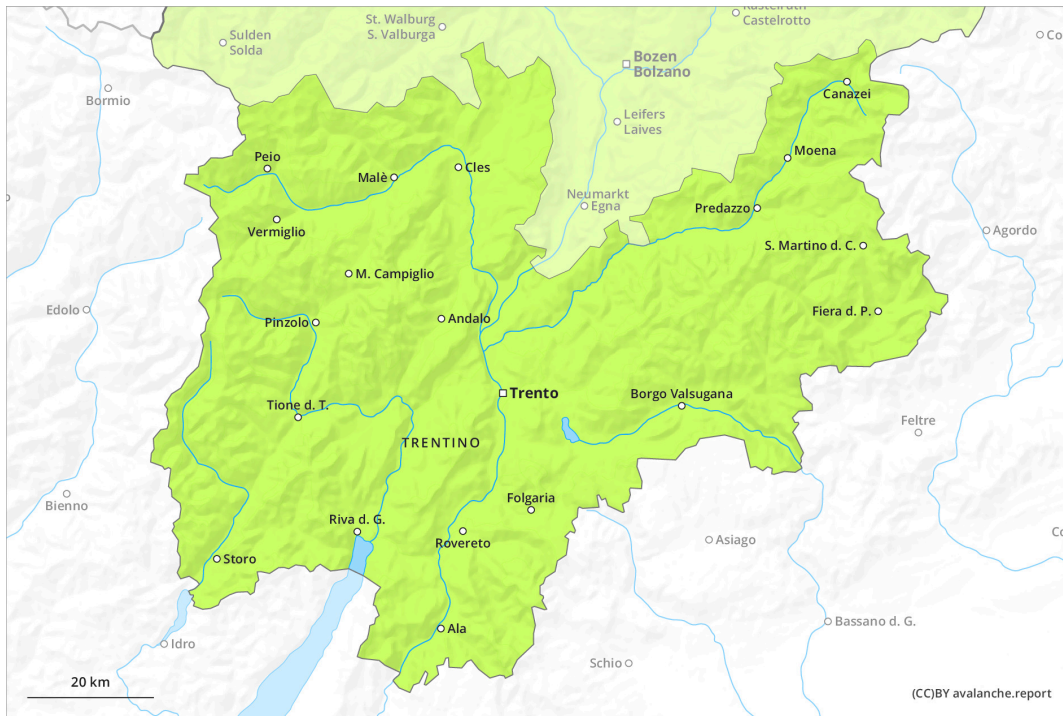
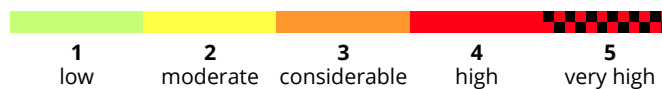
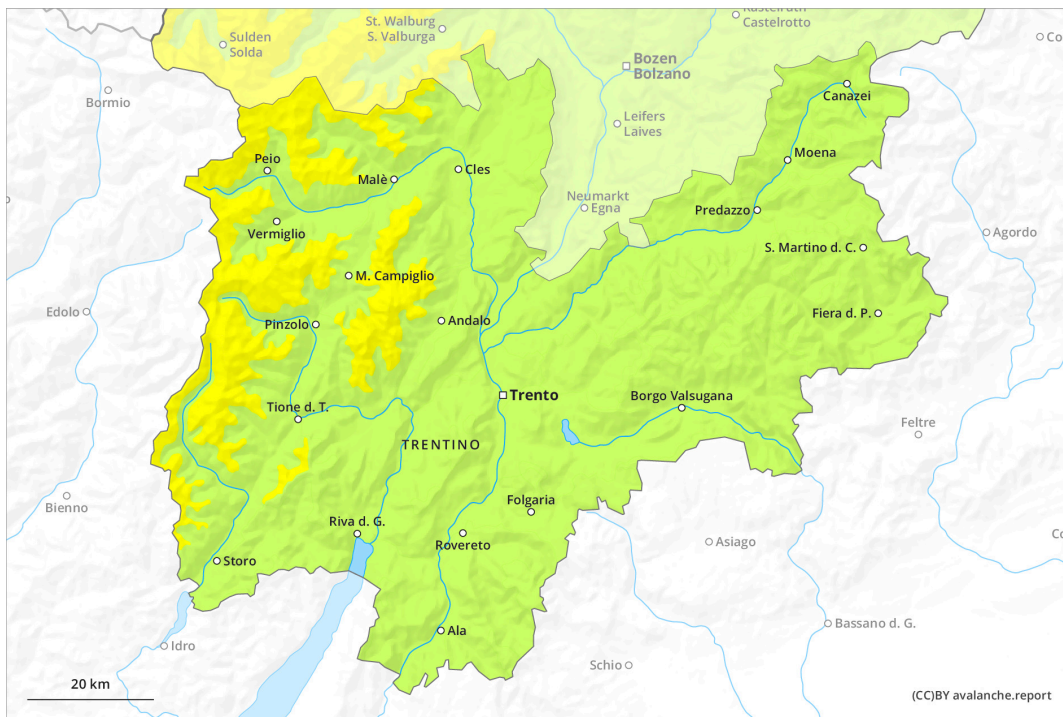




AM



PM



Danger Level 2 - Moderate

AM:



Tendency: Constant avalanche danger →
on Monday 01 01 2024

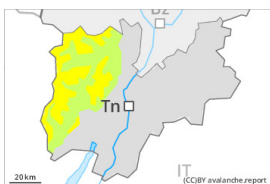


Wind slab



Snowpack stability: **fair**
Frequency: **few**
Avalanche size: **medium**

PM:



Tendency: Constant avalanche danger →
on Monday 01 01 2024



Wind slab



Snowpack stability: **fair**
Frequency: **some**
Avalanche size: **medium**

Wind slabs are to be evaluated with care and prudence. Some snow will fall.

Old wind slabs can be released in isolated cases, but mostly only by large additional loads, in particular on very steep shady slopes above approximately 2400 m. As a consequence of snowfall and the moderate southwesterly wind, fresh snow drift accumulations will form. Individual avalanche prone locations are to be found adjacent to ridgelines and in gullies and bowls. This applies in particular on steep shady slopes. Avalanches can reach medium size in isolated cases. The avalanche danger will increase during the day. In steep terrain there is a danger of falling on the hard snow surface.

Snowpack

Danger patterns

dp.6: cold, loose snow and wind

Snow depths vary greatly above approximately 2400 m, depending on the influence of the wind. Up to 15 cm of snow will fall from the afternoon above approximately 1500 m. The somewhat older wind slabs will be covered with new snow in some cases and therefore difficult to recognise. Towards its base, the snowpack is faceted.

Tendency

The avalanche danger will persist.

Danger Level 1 - Low

AM:



Tendency: Constant avalanche danger →
 on Monday 01 01 2024



Wind slab



Snowpack stability: **fair**
 Frequency: **few**
 Avalanche size: **medium**

PM:



Tendency: Constant avalanche danger →
 on Monday 01 01 2024



Wind slab



Snowpack stability: **fair**
 Frequency: **few**
 Avalanche size: **medium**

Wind slabs are to be evaluated with care and prudence. Some snow will fall.

Old wind slabs can be released in isolated cases, but mostly only by large additional loads, in particular on very steep shady slopes above approximately 2400 m. As a consequence of snowfall and the moderate southwesterly wind, fresh snow drift accumulations will form. Individual avalanche prone locations are to be found adjacent to ridgelines and in gullies and bowls. This applies in particular on steep shady slopes. Avalanches can reach medium size in isolated cases. The avalanche danger will increase a little during the day. In steep terrain there is a danger of falling on the hard snow surface.

Snowpack

Danger patterns

dp.6: cold, loose snow and wind

Snow depths vary greatly above approximately 2400 m, depending on the influence of the wind. Up to 15 cm of snow will fall from the afternoon above approximately 1500 m. The somewhat older wind slabs will be covered with new snow in some cases and therefore difficult to recognise. Towards its base, the snowpack is faceted.

Tendency

The avalanche danger will persist.

Danger Level 1 - Low



Tendency: Constant avalanche danger →
on Monday 01 01 2024

Wind slabs are to be evaluated with care and prudence. Some snow will fall.

In all regions only a little snow is lying. As a consequence of snowfall and the moderate southwesterly wind, fresh snow drift accumulations will form. The avalanche danger will increase a little during the day.

Snowpack

Danger patterns

dp.6: cold, loose snow and wind

The snowpack will be quite stable. Snow depths vary greatly above the tree line, depending on the influence of the wind. The somewhat older wind slabs will be covered with new snow in some cases and therefore difficult to recognise. Up to 15 cm of snow will fall from the afternoon above approximately 1500 m.

Tendency

The avalanche danger will persist.