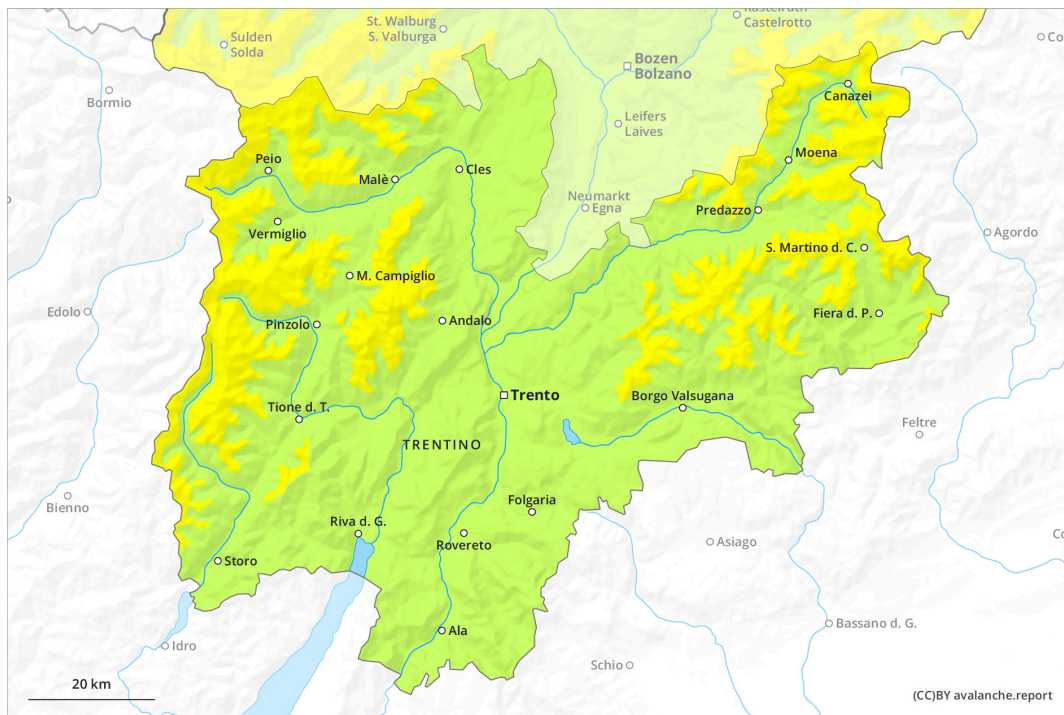
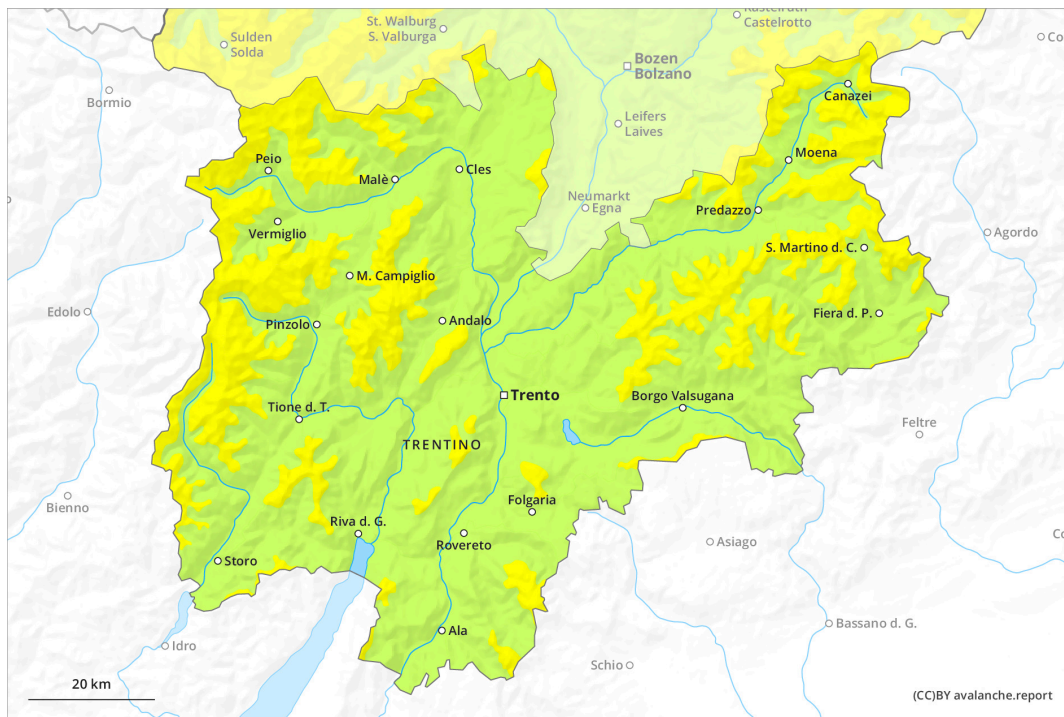




AM

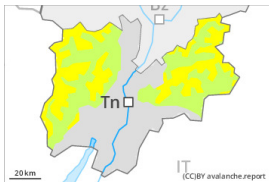


PM



Danger Level 2 - Moderate

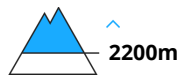
AM:



Tendency: Increasing avalanche danger
 on Saturday 06 01 2024



Wind slab

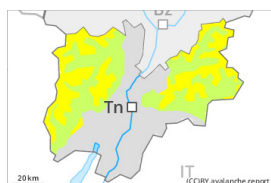


Snowpack stability: **poor**

Frequency: **few**

Avalanche size: **medium**

PM:



Tendency: Increasing avalanche danger
 on Saturday 06 01 2024



New snow



Snowpack stability: **poor**

Frequency: **some**

Avalanche size: **medium**



Wind slab



Snowpack stability: **poor**

Frequency: **some**

Avalanche size: **medium**

During the day: New snow and wind slabs require caution.

Afternoon: The new snow represents the main danger. This snow can be released easily, or, in isolated cases, naturally in all aspects at intermediate and high altitudes. As a consequence of snowfall and the strong wind, fresh snow drift accumulations formed. These can be released by a single winter sport participant in isolated cases above the tree line. At high altitude these avalanche prone locations are more prevalent. Caution is to be exercised in particular at transitions from a shallow to a deep snowpack, as well as in gullies and bowls, and behind abrupt changes in the terrain.

Snowpack

Danger patterns

dp.6: cold, loose snow and wind

Afternoon: Over a wide area over a wide area 20 to 30 cm of snow, and even more in some localities, will fall above approximately 1500 m. Snow depths vary greatly above the tree line, depending on the influence of the wind. The fresh wind slabs are bonding poorly with the old snowpack in all aspects and above the tree line.

Tendency

New snow and wind slabs require caution. The avalanche danger will increase.

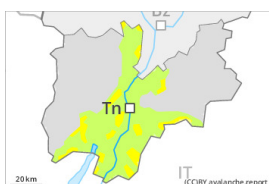
Danger Level 2 - Moderate

AM:



Tendency: Increasing avalanche danger 
 on Saturday 06 01 2024

PM:



Tendency: Increasing avalanche danger 
 on Saturday 06 01 2024



New snow



Treeline

Snowpack stability: **poor**

Frequency: **some**

Avalanche size: **medium**



Wind slab



Treeline

Snowpack stability: **poor**

Frequency: **some**

Avalanche size: **medium**

New snow and wind slabs require caution. During the day:

During the day: The new snow represents the main danger. Can be released easily, or, in isolated cases, naturally in all aspects above the tree line. As a consequence of the strong wind, fresh snow drift accumulations formed. At high altitude these avalanche prone locations are more prevalent. Individual avalanche prone locations are to be found in shady places that are protected from the wind and in gullies and bowls, and behind abrupt changes in the terrain. Caution is to be exercised in particular at transitions from a shallow to a deep snowpack, as well as in gullies and bowls, and behind abrupt changes in the terrain.

Snowpack

Afternoon: Over a wide area over a wide area 20 to 30 cm of snow, and even more in some localities, will fall above approximately 1500 m. Snow depths vary greatly above the tree line, depending on the influence of the wind. The fresh wind slabs are bonding poorly with the old snowpack in all aspects and above the tree line. At low altitude only a little snow is lying.

Tendency

New snow and wind slabs require caution. The avalanche danger will increase.