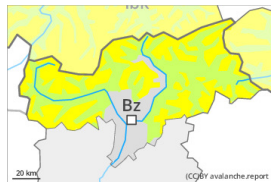


Danger Level 2 - Moderate



Tendency: Increasing avalanche danger
on Sunday 07 01 2024



Wind slab



Snowpack stability: **poor**

Frequency: **some**

Avalanche size: **medium**

Slight increase in avalanche danger in the course of the day. Fresh wind slabs require caution.

As a consequence of new snow and a strengthening wind, sometimes avalanche prone wind slabs will form in the afternoon above the tree line. Caution is to be exercised in particular adjacent to ridgelines in gullies and bowls, and behind abrupt changes in the terrain. The avalanche prone locations are barely recognisable because of the poor visibility.

In addition a latent danger of gliding avalanches exists, in particular on steep east, south and west facing slopes below approximately 2600 m. In isolated cases the gliding avalanches are quite large. This applies in the regions with a lot of snow. Caution is to be exercised in areas with glide cracks.

Snowpack

Danger patterns

dp.6: cold, loose snow and wind

dp.2: gliding snow

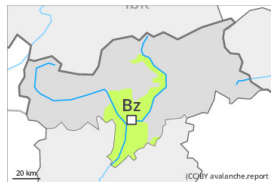
Over a wide area 10 to 30 cm of snow will fall. Afternoon: The wind will be moderate in some regions. The fresh wind slabs are lying on soft layers at elevated altitudes. They can in some cases be released easily.

The new snow will be deposited on surface hoar in some places in areas close to the tree line. The new snow of the last few days is lying on a crust in all aspects below approximately 2600 m. The old snowpack will be stable over a wide area.

Tendency

Increase in avalanche danger as a consequence of new snow and wind. Over a wide area 20 to 40 cm of snow, and even more in some localities, will fall until Sunday above approximately 1000 m. The fresh wind slabs can be released easily.

Danger Level 1 - Low



Tendency: Constant avalanche danger →
on Sunday 07 01 2024



Wind slab



Treeline

Snowpack stability: **poor**

Frequency: **few**

Avalanche size: **small**

The avalanche danger will increase a little during the day. Fresh wind slabs require caution.

As a consequence of new snow and a strengthening wind, mostly small wind slabs will form in the afternoon above the tree line. These can be released in isolated cases. Caution is to be exercised in particular adjacent to ridgelines in gullies and bowls, and behind abrupt changes in the terrain. The avalanche prone locations are barely recognisable because of the poor visibility. In steep terrain there is a danger of falling on the hard snow surface.

Snowpack

Danger patterns

dp.6: cold, loose snow and wind

10 to 30 cm of snow will fall above approximately 1000 m. Evening and first half of night: The wind will be moderate in some regions. The new snow and wind slabs will be deposited on a crust in particular on sunny slopes at high altitude.

Tendency

Fresh wind slabs require caution.