

Danger Level 3 - Considerable



Tendency: Constant avalanche danger →
 on Monday 08 01 2024



Wind slab



Snowpack stability: **very poor**

Frequency: **some**

Avalanche size: **medium**



Wind slab



Snowpack stability: **very poor**

Frequency: **few**

Avalanche size: **medium**

Fresh wind slabs require caution. The fresh wind slabs can be released easily.

Fresh wind slabs represent the main danger. As a consequence of new snow and a strengthening wind, easily released wind slabs will form. This applies in areas close to the tree line, and above the tree line. Caution is to be exercised in particular adjacent to ridgelines in gullies and bowls, and behind abrupt changes in the terrain. The number and size of avalanche prone locations will increase with altitude. The avalanche prone locations are barely recognisable because of the poor visibility.

In addition a latent danger of gliding avalanches exists, in particular on steep east, south and west facing slopes below approximately 2600 m. In isolated cases the gliding avalanches are quite large. Caution is to be exercised in areas with glide cracks.

Snowpack

Danger patterns

dp.6: cold, loose snow and wind

dp.2: gliding snow

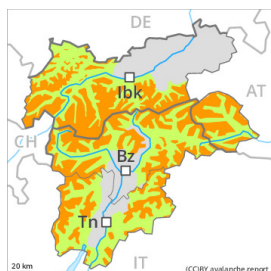
Saturday: Over a wide area 20 to 30 cm of snow, and even more in some localities, has fallen above approximately 1000 m. Sunday: Up to 20 cm of snow will fall in all altitude zones. The wind will be moderate in some regions. The fresh wind slabs will be deposited on soft layers. They can be released easily.

The new snow is lying on surface hoar in some places in areas close to the tree line. The new snow of last week is lying on a crust in all aspects below approximately 2600 m. The old snowpack will be stable over a wide area.

Tendency

The fresh wind slabs remain prone to triggering.

Danger Level 3 - Considerable



Tendency: Constant avalanche danger →
on Monday 08 01 2024



Wind slab



Treeline

Snowpack stability: **very poor**

Frequency: **some**

Avalanche size: **medium**

Fresh wind slabs require caution. The fresh wind slabs can be released easily.

Fresh wind slabs represent the main danger. As a consequence of new snow and a strengthening wind, easily released wind slabs will form in particular above the tree line. Caution is to be exercised in particular adjacent to ridgelines in gullies and bowls, and behind abrupt changes in the terrain. The number and size of avalanche prone locations will increase with altitude. The avalanche prone locations are barely recognisable because of the poor visibility.

In addition a latent danger of gliding avalanches exists, in particular on steep east, south and west facing slopes below approximately 2600 m. In isolated cases the gliding avalanches are quite large. This applies in the regions with a lot of snow. Caution is to be exercised in areas with glide cracks.

Snowpack

Danger patterns

dp.6: cold, loose snow and wind

dp.2: gliding snow

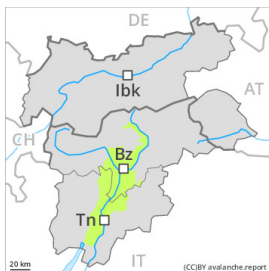
Saturday: Over a wide area 20 to 30 cm of snow, and even more in some localities, has fallen above approximately 1000 m. Sunday: In the north over a wide area 10 to 20 cm of snow will fall in all altitude zones. Some snow will fall in the south. The wind will be moderate in some regions. The fresh wind slabs will be deposited on soft layers. They can be released easily.

The new snow is lying on surface hoar in some places in areas close to the tree line. The new snow of last week is lying on a crust in all aspects below approximately 2600 m. The old snowpack will be stable over a wide area.

Tendency

The fresh wind slabs remain prone to triggering.

Danger Level 1 - Low



Tendency: Constant avalanche danger →
on Monday 08 01 2024



Wind slab



Treeline

Snowpack stability: **poor**

Frequency: **few**

Avalanche size: **small**

Fresh wind slabs require caution.

As a consequence of a moderate wind, mostly small wind slabs will form above the tree line. These can be released in isolated cases. Caution is to be exercised in particular adjacent to ridgelines in gullies and bowls, and behind abrupt changes in the terrain. The avalanche prone locations are barely recognisable because of the poor visibility. In the regions neighbouring those that are subject to danger level 3 (considerable) and at elevated altitudes the avalanche danger is a little higher.

Snowpack

Danger patterns

dp.6: cold, loose snow and wind

Saturday: 10 to 20 cm of snow has fallen above approximately 1000 m. The wind will be moderate in some regions. Fresh wind slabs will be deposited on soft layers.

Tendency

Fresh wind slabs require caution.