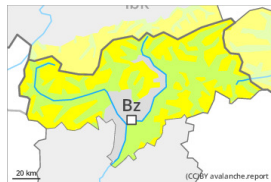


Danger Level 2 - Moderate



Tendency: Increasing avalanche danger
on Wednesday 17 01 2024



Wind slab



Treeline

Snowpack stability: **poor**

Frequency: **some**

Avalanche size: **medium**

Fresh wind slabs are mostly easy to recognise and prone to triggering.

The fresh wind slabs can be released easily in some cases above the tree line. This also applies in areas close to the tree line. The avalanche prone locations are to be found in particular adjacent to ridgelines and in gullies and bowls in all aspects. The wind slabs are clearly recognisable to the trained eye. They are to be avoided as far as possible. In isolated cases avalanches are medium-sized. Even a small avalanche can sweep winter sport participants along and give rise to falls.

In addition further very occasional gliding avalanches are possible, in particular on steep east, south and west facing slopes below approximately 2600 m. In isolated cases the gliding avalanches are quite large, in particular in the regions with a lot of snow. Areas with glide cracks are to be avoided.

Snowpack

Danger patterns

dp.6: cold, loose snow and wind

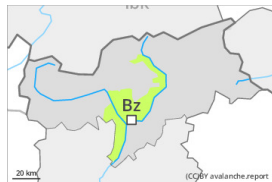
As a consequence of a moderate to strong wind from westerly directions, further wind slabs will form in the course of the day. The fresh wind slabs are lying on surface hoar in some places. These are mostly rather small but can in some cases be released easily.

Towards its base, the snowpack is largely stable. Snow depths vary greatly above the tree line, depending on the influence of the wind. The snowpack will be subject to considerable local variations.

Tendency

In particular in the south 5 to 10 cm of snow, and even more in some localities, will fall. On Wednesday as a consequence of the strong southwesterly wind there will be an increase in the danger of dry avalanches. The fresh wind slabs remain prone to triggering.

Danger Level 1 - Low



Tendency: Constant avalanche danger →
on Wednesday 17 01 2024



Wind slab



Treeline

Snowpack stability: **poor**

Frequency: **few**

Avalanche size: **small**

Wind slabs require caution.

The wind slabs can be released in isolated cases, especially at their margins. Caution is to be exercised in particular adjacent to ridgelines in gullies and bowls, and behind abrupt changes in the terrain. Mostly avalanches are small.

Snowpack

Danger patterns

dp.6: cold, loose snow and wind

The wind slabs are lying on soft layers. The old snowpack will be quite stable.

Tendency

5 to 10 cm of snow, and even more in some localities, will fall. On Wednesday as a consequence of the strong southwesterly wind there will be only a slight increase in the danger of dry avalanches. The fresh wind slabs remain prone to triggering.