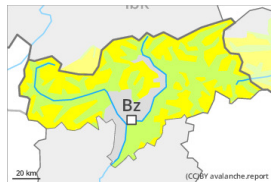


Danger Level 2 - Moderate



Tendency: Constant avalanche danger →
on Saturday 20 01 2024



Wind slab



Treeline

Snowpack stability: **poor**

Frequency: **some**

Avalanche size: **medium**

Fresh wind slabs are easy for the trained eye to recognise but prone to triggering.

The fresh and somewhat older wind slabs can be released by a single winter sport participant in some cases above the tree line. This also applies in areas close to the tree line. The avalanche prone locations are to be found in particular adjacent to ridgelines and in gullies and bowls in all aspects. The wind slabs are clearly recognisable to the trained eye. They are to be avoided as far as possible. In some cases avalanches are medium-sized. Even a small avalanche can sweep winter sport participants along and give rise to falls.

In addition further very occasional gliding avalanches are possible, in particular on steep east, south and west facing slopes below approximately 2600 m. In isolated cases the gliding avalanches are quite large, in particular in the regions with a lot of snow. Areas with glide cracks are to be avoided.

Snowpack

Danger patterns

dp.6: cold, loose snow and wind

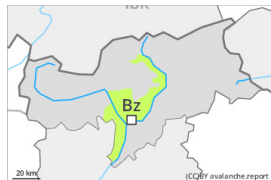
In some regions up to 15 cm of snow, and even more in some localities, has fallen since Wednesday. Over a wide area over a wide area 5 to 10 cm of snow, and even more in some localities, will fall. As a consequence of the sometimes strong wind the wind slabs will increase in size additionally. The wind slabs are lying on the unfavourable surface of an old snowpack.

Towards its base, the snowpack is largely stable. Snow depths vary greatly above the tree line, depending on the influence of the wind. The snowpack will be subject to considerable local variations.

Tendency

Fresh wind slabs require caution. The wind slabs remain prone to triggering.

Danger Level 1 - Low



Tendency: Constant avalanche danger →
on Saturday 20 01 2024



Wind slab



Treeline

Snowpack stability: **poor**

Frequency: **few**

Avalanche size: **small**

Wind slabs require caution.

The fresh and somewhat older wind slabs can be released in isolated cases, especially at their margins. Caution is to be exercised in particular adjacent to ridgelines in gullies and bowls, and behind abrupt changes in the terrain. Mostly avalanches are small.

Snowpack

Danger patterns

dp.6: cold, loose snow and wind

Over a wide area up to 5 cm of snow, and even more in some localities, will fall. Wind slabs are lying on soft layers in particular on steep shady slopes. The old snowpack will be quite stable.

Tendency

Wind slabs require caution.