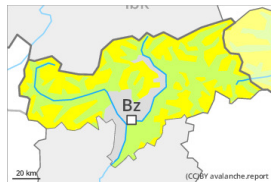


## Danger Level 2 - Moderate



**Tendency: Constant avalanche danger** →  
on Sunday 21 01 2024



Wind slab



Snowpack stability: **poor**

Frequency: **some**

Avalanche size: **medium**

### Wind slabs are in some cases prone to triggering.

More recent wind slabs can be released by a single winter sport participant in some cases above approximately 2200 m. The avalanche prone locations are to be found in particular on very steep west, north and east facing slopes above approximately 2200 m, especially adjacent to ridgelines and in gullies and bowls. The wind slabs are clearly recognisable to the trained eye. They are to be avoided as far as possible. Mostly avalanches are only small. Even a small avalanche can sweep winter sport participants along and give rise to falls.

On extremely steep sunny slopes individual small dry loose snow avalanches are possible as a consequence of solar radiation.

In addition still more very occasional gliding avalanches are possible, in particular on steep east, south and west facing slopes below approximately 2600 m, in particular in the regions with a lot of snow. Areas with glide cracks are to be avoided.

## Snowpack

### Danger patterns

dp.6: cold, loose snow and wind

The conditions are wintry. Up to 20 cm of snow, and even more in some localities, has fallen since Wednesday. The wind has transported the new snow. The fresh wind slabs are lying on the unfavourable surface of an old snowpack. They are bonding only slowly with the old snowpack especially on steep shady slopes.

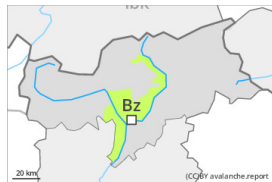
Towards its base, the snowpack consists of faceted crystals. This is particularly the case in the areas with less snow, well off the main Alpine ridge. The snowpack will be subject to considerable local variations above the tree line.

Low and intermediate altitudes: Towards its base, the snowpack is moist; its surface consists of loosely bonded snow.

## Tendency

The wind slabs remain in some cases prone to triggering especially on very steep shady slopes.

## Danger Level 1 - Low



**Tendency: Constant avalanche danger** →  
on Sunday 21 01 2024



Wind slab



Treeline

Snowpack stability: **poor**

Frequency: **few**

Avalanche size: **small**

### Wind slabs require caution.

The fresh and somewhat older wind slabs can be released in isolated cases, especially at their margins. Caution is to be exercised in particular adjacent to ridgelines in gullies and bowls, and behind abrupt changes in the terrain. Mostly avalanches are small.

### Snowpack

#### Danger patterns

dp.6: cold, loose snow and wind

Over a wide area up to 5 cm of snow, and even more in some localities, has fallen. Wind slabs are lying on soft layers in particular on steep shady slopes. The old snowpack will be quite stable.

### Tendency

Wind slabs require caution.