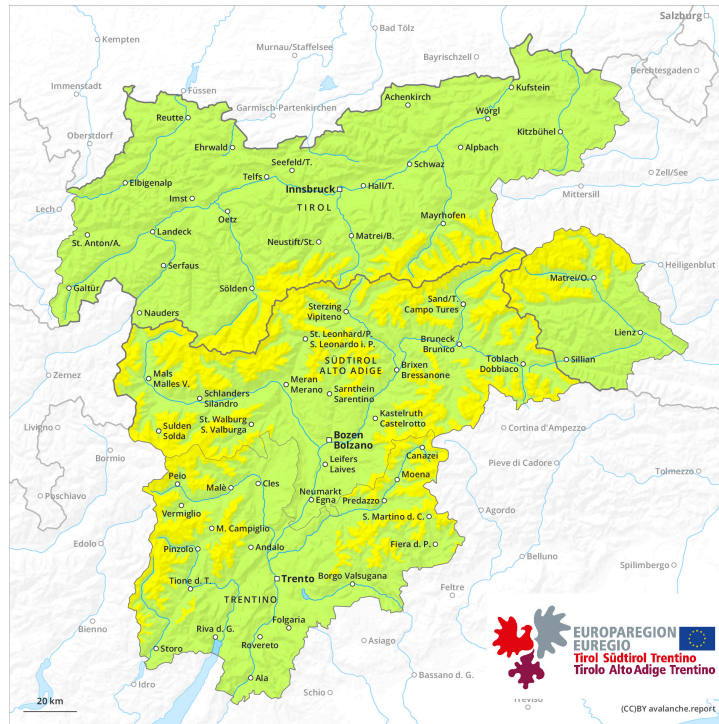
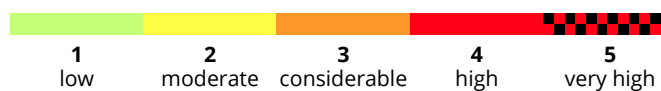
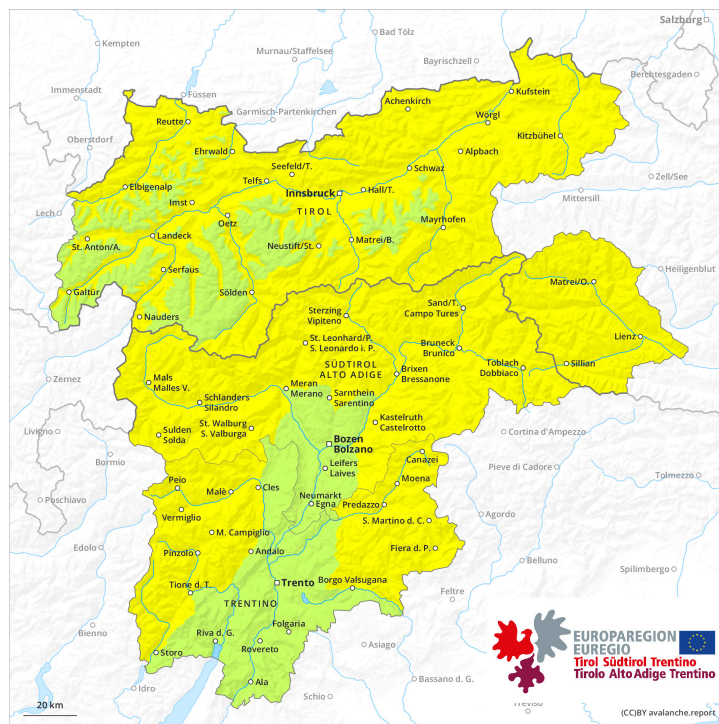




AM

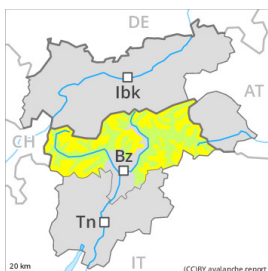


PM



Danger Level 2 - Moderate

AM:



Tendency: Constant avalanche danger →
 on Friday 16 02 2024

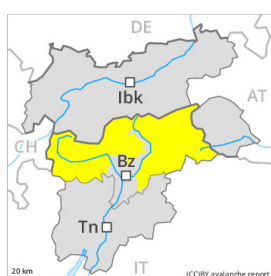


Wind slab



Snowpack stability: **poor**
 Frequency: **some**
 Avalanche size: **medium**

PM:



Tendency: Constant avalanche danger →
 on Friday 16 02 2024



Wet snow



Snowpack stability: **very poor**
 Frequency: **some**
 Avalanche size: **small**



Wind slab



Snowpack stability: **poor**
 Frequency: **some**
 Avalanche size: **medium**

Wind slabs require caution. As the day progresses wet snow slides are to be expected.

The fresh and somewhat older wind slabs can be released by a single winter sport participant in isolated cases in particular on steep shady slopes. Avalanche prone locations are to be found in particular adjacent to ridgelines and in gullies and bowls. At elevated altitudes and in the regions exposed to heavier precipitation such avalanche prone locations are a little more prevalent. In some cases avalanches are medium-sized.

As a consequence of warming during the day and solar radiation mostly small moist snow slides are to be expected below approximately 2600 m. This applies in particular on steep sunny slopes.

Individual gliding avalanches are possible, even medium-sized ones. Areas with glide cracks are to be avoided.

Snowpack

Danger patterns

dp.6: cold, loose snow and wind

dp.10: springtime scenario

The wind slabs are lying on soft layers on shady slopes at high altitudes and in high Alpine regions.

Sunshine and high temperatures will give rise as the day progresses to increasing softening of the snowpack over a wide area in particular on steep sunny slopes. These conditions will cause a weakening of the near-surface layers as the day progresses.



Towards its base, the snowpack consists of faceted crystals but is hard to trigger.

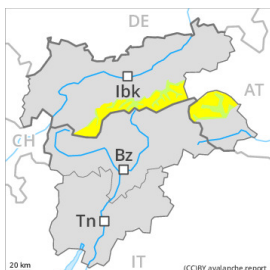
At low and intermediate altitudes only a little snow is lying.

Tendency

Wind slabs require caution. As the day progresses wet snow slides are to be expected.

Danger Level 2 - Moderate

AM:



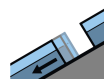
Tendency: Constant avalanche danger →
 on Friday 16 02 2024



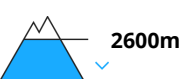
Wind slab



Snowpack stability: **poor**
 Frequency: **few**
 Avalanche size: **medium**

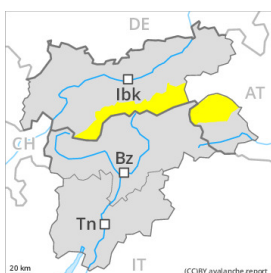


Gliding snow

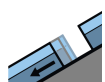


Snowpack stability: **very poor**
 Frequency: **few**
 Avalanche size: **medium**

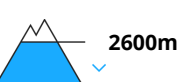
PM:



Tendency: Constant avalanche danger →
 on Friday 16 02 2024



Gliding snow



Snowpack stability: **very poor**
 Frequency: **few**
 Avalanche size: **medium**



Wind slab



Snowpack stability: **poor**
 Frequency: **few**
 Avalanche size: **medium**

Wind slabs require caution. Gradual increase in danger of gliding avalanches and moist snow slides as a consequence of warming during the day and solar radiation.

More recent wind slabs can be released in isolated cases on northwest to north to east facing aspects above approximately 2400 m. The avalanche prone locations are to be found especially adjacent to ridgelines and in gullies and bowls. Avalanches can in isolated cases reach medium size.

On steep grassy slopes individual medium-sized gliding avalanches are possible below approximately 2600 m. In the course of the day the activity of gliding avalanches will gradually increase. Areas with glide cracks are to be avoided.

As a consequence of warming during the day and solar radiation mostly small wet loose snow avalanches are to be expected, especially on extremely steep sunny slopes.

Snowpack

Danger patterns

dp.6: cold, loose snow and wind

dp.2: gliding snow

Fresh wind slabs are lying on soft layers on northwest to north to east facing aspects. They are in isolated



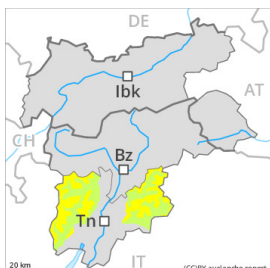
cases prone to triggering. No distinct weak layers exist in the bottom section of the snowpack. Sunshine and high temperatures will give rise to significant softening of the snowpack in particular on extremely steep sunny slopes. At low altitude only a little snow is now lying.

Tendency

The weather conditions will bring about a stabilisation of the snow drift accumulations. They are now only very rarely prone to triggering. A latent danger of gliding avalanches exists.

Danger Level 2 - Moderate

AM:



Tendency: Constant avalanche danger →
 on Friday 16 02 2024



Wind slab



Snowpack stability: **poor**

Frequency: **some**

Avalanche size: **medium**



Wet snow

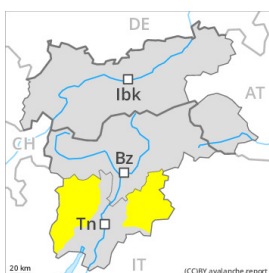


Snowpack stability: **poor**

Frequency: **few**

Avalanche size: **small**

PM:



Tendency: Constant avalanche danger →
 on Friday 16 02 2024



Wet snow



Snowpack stability: **poor**

Frequency: **some**

Avalanche size: **medium**



Wind slab



Snowpack stability: **poor**

Frequency: **some**

Avalanche size: **medium**

As a consequence of warming and solar radiation, the activity of moist avalanches will appreciably increase. Old wind slabs are to be evaluated with care and prudence.

As a consequence of warming during the day and solar radiation moist snow slides and avalanches are possible as the day progresses. Avalanche prone locations for moist avalanches are to be found on steep southeast, south and west facing slopes. This applies in particular on steep slopes below approximately 2600 m, as well as on rocky sunny slopes at elevated altitudes. Mostly avalanches are only small but in many cases easily released.

The old wind slabs can be released even by a single winter sport participant. In isolated cases the avalanches are medium-sized. The avalanche prone locations are to be found in particular on steep slopes above approximately 2200 m, and in gullies and bowls.

Snowpack

Danger patterns

dp.10: springtime scenario

Sunshine and high temperatures will give rise as the day progresses to softening of the snowpack over a wide area in particular on sunny slopes below approximately 2800 m.

The old wind slabs are poorly bonded with the old snowpack in particular on steep shady slopes and at



elevated altitudes.

Tendency

Sunshine and high temperatures will give rise as the day progresses to moistening of the snowpack over a wide area. As a consequence of warming numerous moist and wet avalanches are to be expected, even medium-sized ones.

Danger Level 2 - Moderate

AM:



Tendency: Constant avalanche danger →
 on Friday 16 02 2024



Wind slab



Snowpack stability: **poor**
 Frequency: **few**
 Avalanche size: **small**

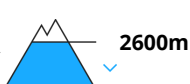
PM:



Tendency: Constant avalanche danger →
 on Friday 16 02 2024



Wet snow



Snowpack stability: **very poor**
 Frequency: **some**
 Avalanche size: **small**



Wind slab



Snowpack stability: **poor**
 Frequency: **some**
 Avalanche size: **medium**

Wind slabs require caution. As the day progresses wet loose snow avalanches are to be expected.

The more recent wind slabs can be released by a single winter sport participant in isolated cases in particular on steep shady slopes. Avalanche prone locations are to be found in particular adjacent to ridgelines and in gullies and bowls. Mostly avalanches are small.

As a consequence of warming during the day and solar radiation wet loose snow slides are to be expected below approximately 2600 m. This applies in particular on extremely steep sunny slopes.

Snowpack

Danger patterns

dp.6: cold, loose snow and wind

dp.10: springtime scenario

The wind slabs are lying on soft layers on shady slopes at high altitudes and in high Alpine regions.

Sunshine and high temperatures will give rise as the day progresses to increasing softening of the snowpack over a wide area in particular on steep sunny slopes. These conditions will cause a weakening of the near-surface layers as the day progresses.

Towards its base, the snowpack consists of faceted crystals but is hard to trigger.

At low and intermediate altitudes only a little snow is lying.



Tendency

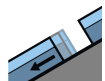
Wind slabs require caution. As the day progresses wet snow slides and avalanches are to be expected.

Danger Level 2 - Moderate

AM:



Tendency: Constant avalanche danger →
 on Friday 16 02 2024



Gliding snow



2600m

Snowpack stability: **very poor**

Frequency: **few**

Avalanche size: **medium**



Wind slab



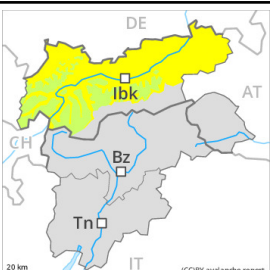
2400m

Snowpack stability: **poor**

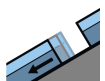
Frequency: **few**

Avalanche size: **small**

PM:



Tendency: Constant avalanche danger →
 on Friday 16 02 2024



Gliding snow



2600m

Snowpack stability: **very poor**

Frequency: **few**

Avalanche size: **medium**

Gradual increase in danger of gliding avalanches and moist snow slides as a consequence of warming during the day and solar radiation. Fresh wind slabs require caution.

On steep grassy slopes and below approximately 2600 m individual gliding avalanches are possible, in particular medium-sized ones. This applies especially in the regions with a lot of snow. In the course of the day the activity of gliding avalanches will increase. Areas with glide cracks are to be avoided. As a consequence of warming during the day and solar radiation mostly small wet loose snow avalanches are to be expected, especially on extremely steep sunny slopes.

The small wind slabs of the last few days can be released by a single winter sport participant in isolated cases. Avalanche prone locations are to be found on very steep northwest, north and east facing slopes above approximately 2400 m. The wind slabs are to be avoided especially in terrain where there is a danger of falling.

Snowpack

Danger patterns

dp.2: gliding snow

dp.6: cold, loose snow and wind

Sunshine and high temperatures will give rise as the day progresses to increasing softening of the snowpack.

The mostly small wind slabs of the last few days are in individual cases still prone to triggering. They are lying on soft layers on northwest to north to east facing aspects. No distinct weak layers exist in the bottom

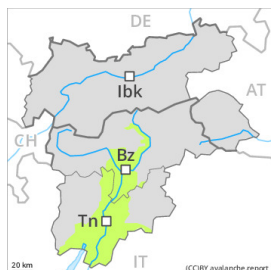


section of the snowpack.

Tendency

The weather will be exceptionally warm. Gliding snow represents the main danger.

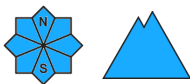
Danger Level 1 - Low



Tendency: Constant avalanche danger →
on Friday 16 02 2024



Wet snow



Snowpack stability: **very poor**

Frequency: **few**

Avalanche size: **small**



Wind slab



Snowpack stability: **poor**

Frequency: **few**

Avalanche size: **small**

As the day progresses wet snow slides and avalanches are to be expected. Wind slabs require caution.

As a consequence of warming during the day and solar radiation small moist snow slides and avalanches are to be expected. This applies in particular on steep sunny slopes. The avalanche danger will increase a little during the day.

Wind slabs can be released in isolated cases, but mostly only by large additional loads, on very steep shady slopes above approximately 2400 m, especially adjacent to ridgelines and in pass areas. Mostly avalanches are only small.

Snowpack

Danger patterns

dp.10: springtime scenario

dp.6: cold, loose snow and wind

Sunshine and high temperatures will give rise as the day progresses to increasing softening of the snowpack over a wide area.

Wind slabs are in individual cases still prone to triggering in particular on steep shady slopes, especially adjacent to ridgelines and in gullies and bowls.

At low and intermediate altitudes only a little snow is now lying.

Tendency

As the day progresses wet snow slides and avalanches are to be expected.