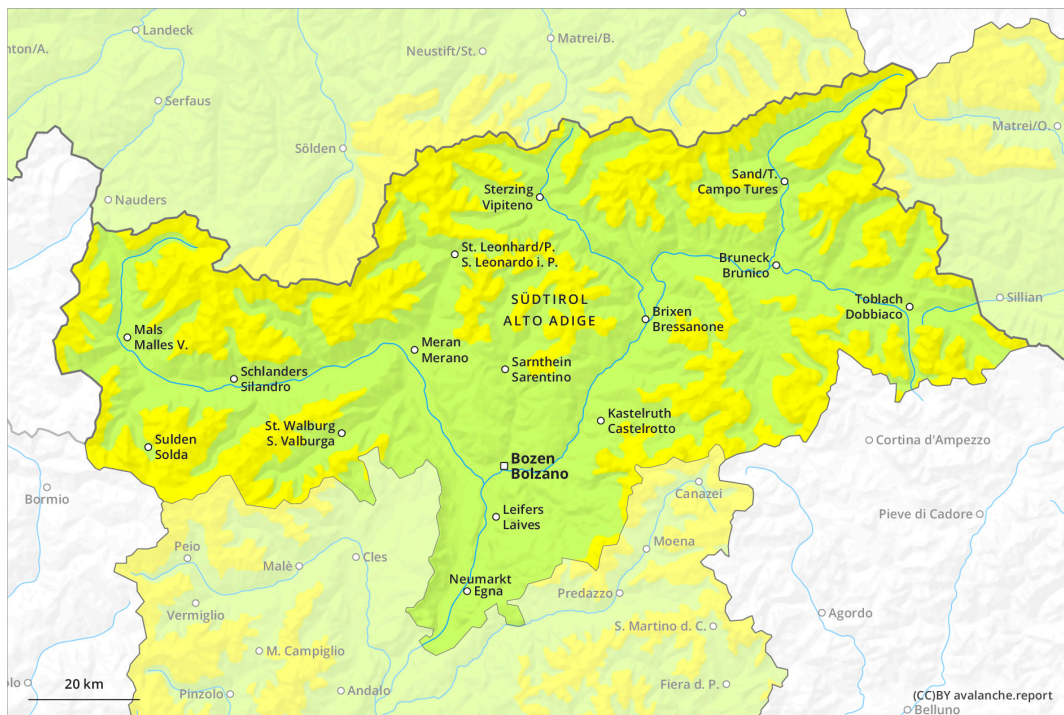
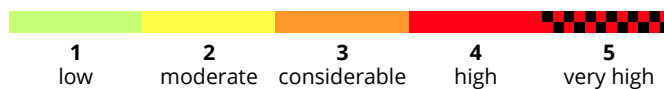
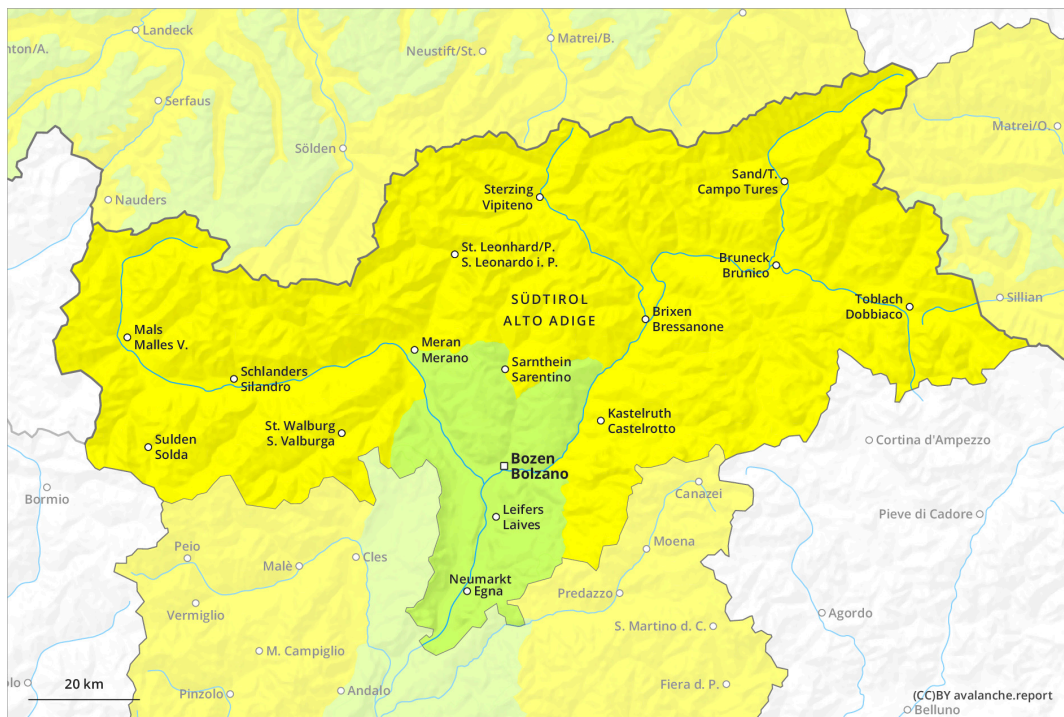




AM

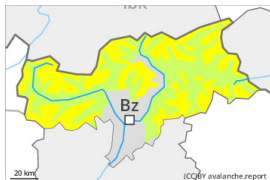


PM



Danger Level 2 - Moderate

AM:



Tendency: Constant avalanche danger →
 on Friday 16 02 2024

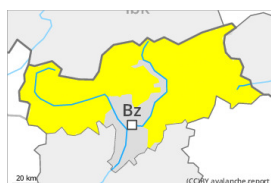


Wind slab



Snowpack stability: **poor**
 Frequency: **some**
 Avalanche size: **medium**

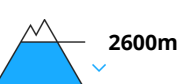
PM:



Tendency: Constant avalanche danger →
 on Friday 16 02 2024



Wet snow



Snowpack stability: **very poor**
 Frequency: **some**
 Avalanche size: **small**



Wind slab



Snowpack stability: **poor**
 Frequency: **some**
 Avalanche size: **medium**

Wind slabs require caution. As the day progresses wet snow slides are to be expected.

The fresh and somewhat older wind slabs can be released by a single winter sport participant in isolated cases in particular on steep shady slopes. Avalanche prone locations are to be found in particular adjacent to ridgelines and in gullies and bowls. At elevated altitudes and in the regions exposed to heavier precipitation such avalanche prone locations are a little more prevalent. In some cases avalanches are medium-sized.

As a consequence of warming during the day and solar radiation mostly small moist snow slides are to be expected below approximately 2600 m. This applies in particular on steep sunny slopes.

Individual gliding avalanches are possible, even medium-sized ones. Areas with glide cracks are to be avoided.

Snowpack

Danger patterns

dp.6: cold, loose snow and wind

dp.10: springtime scenario

The wind slabs are lying on soft layers on shady slopes at high altitudes and in high Alpine regions.

Sunshine and high temperatures will give rise as the day progresses to increasing softening of the snowpack over a wide area in particular on steep sunny slopes. These conditions will cause a weakening of the near-surface layers as the day progresses.



Towards its base, the snowpack consists of faceted crystals but is hard to trigger.

At low and intermediate altitudes only a little snow is lying.

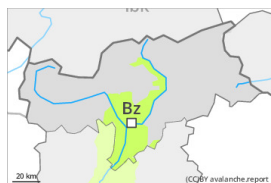
Tendency

Wind slabs require caution. As the day progresses wet snow slides are to be expected.

Danger Level 1 - Low



Tendency: Constant avalanche danger →
on Friday 16 02 2024



Wet snow



Snowpack stability: **very poor**

Frequency: **few**

Avalanche size: **small**



Wind slab



Snowpack stability: **poor**

Frequency: **few**

Avalanche size: **small**

As the day progresses wet snow slides and avalanches are to be expected. Wind slabs require caution.

As a consequence of warming during the day and solar radiation small moist snow slides and avalanches are to be expected. This applies in particular on steep sunny slopes. The avalanche danger will increase a little during the day.

Wind slabs can be released in isolated cases, but mostly only by large additional loads, on very steep shady slopes above approximately 2400 m, especially adjacent to ridgelines and in pass areas. Mostly avalanches are only small.

Snowpack

Danger patterns

dp.10: springtime scenario

dp.6: cold, loose snow and wind

Sunshine and high temperatures will give rise as the day progresses to increasing softening of the snowpack over a wide area.

Wind slabs are in individual cases still prone to triggering in particular on steep shady slopes, especially adjacent to ridgelines and in gullies and bowls.

At low and intermediate altitudes only a little snow is now lying.

Tendency

As the day progresses wet snow slides and avalanches are to be expected.