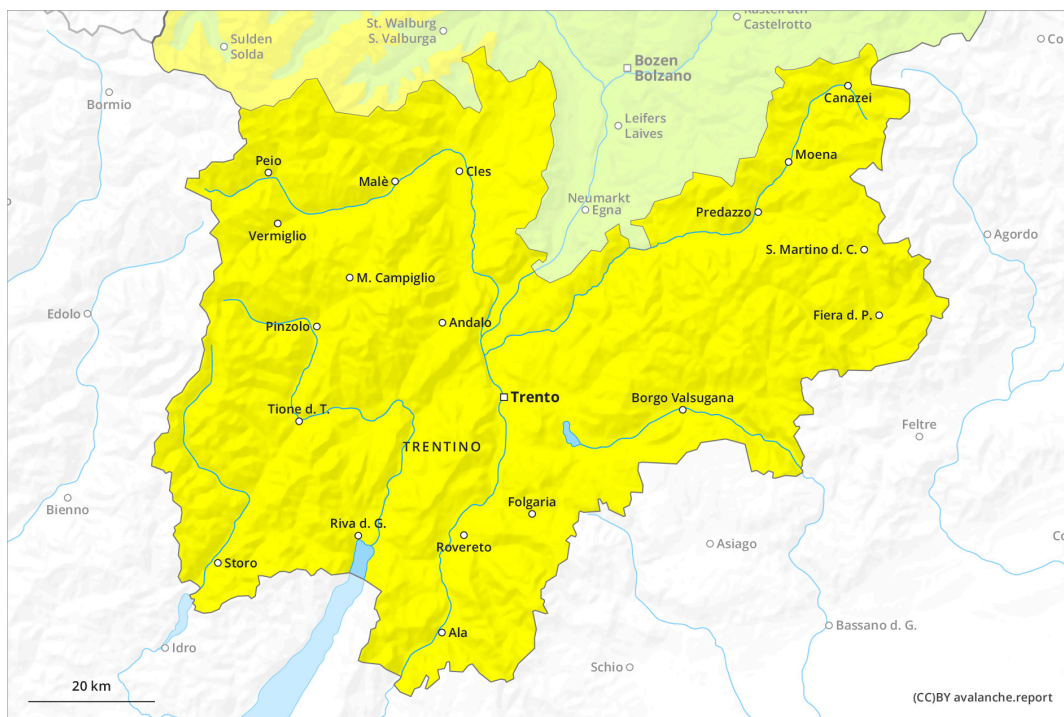
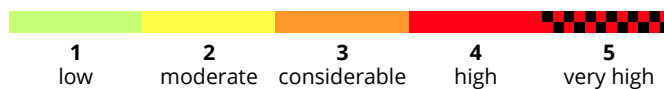
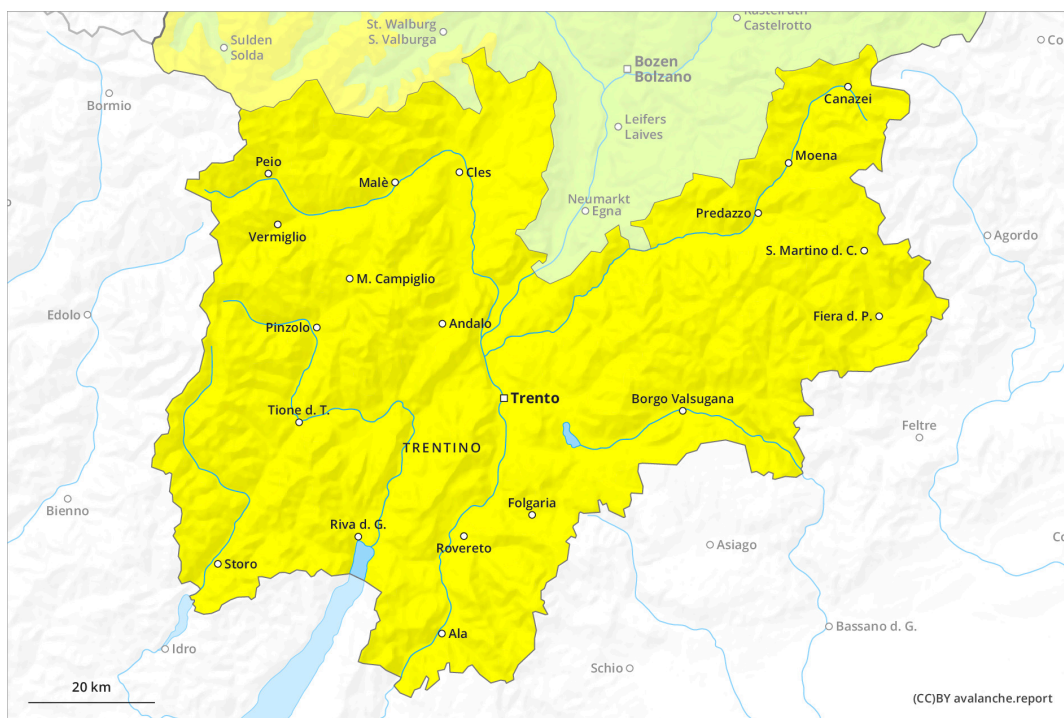




AM



PM

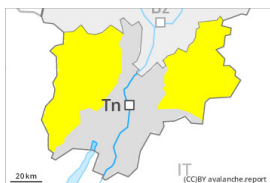


Danger Level 2 - Moderate

AM:



Tendency: Constant avalanche danger →
 on Sunday 17 03 2024



Wind slab



2500m

Snowpack stability: **poor**

Frequency: **some**

Avalanche size: **medium**



Wet snow



2500m

Snowpack stability: **poor**

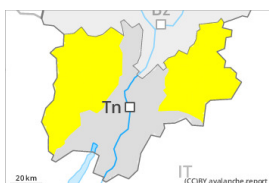
Frequency: **some**

Avalanche size: **small**

PM:



Tendency: Constant avalanche danger →
 on Sunday 17 03 2024



Wind slab



2500m

Snowpack stability: **poor**

Frequency: **some**

Avalanche size: **medium**



Wet snow



2500m

Snowpack stability: **poor**

Frequency: **some**

Avalanche size: **medium**

The wind slabs must be evaluated with care and prudence in all aspects at high altitudes and in high Alpine regions. The danger of moist snow slides and avalanches will increase during the day.

Below approximately 2500 m small and, in isolated cases, medium-sized moist and wet avalanches are possible. As the day progresses as a consequence of warming there will be a gradual increase in the danger of moist and wet avalanches, in particular on steep sunny slopes above the tree line, as well as on steep east, south and west facing slopes. Individual gliding avalanches can also occur.

In the regions with a lot of snow dry slab avalanches are possible, even medium-sized ones. These can be released, especially by large additional loads,, especially on steep shady slopes at high altitudes and in high Alpine regions. These can in isolated cases reach medium size. The prevalence of the avalanche prone locations will increase with altitude. Caution is to be exercised in particular adjacent to ridgelines and in gullies and bowls, as well as in places that are protected from the wind.

Snowpack

Danger patterns

dp.10: springtime scenario

Outgoing longwave radiation during the night will be reduced. The weather conditions from the early morning will give rise to gradual moistening of the snowpack in particular on very steep slopes. This applies



in particular below approximately 2500 m in all aspects. At low and intermediate altitudes a little snow is lying.

Tendency

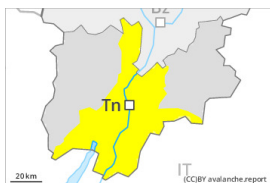
The weather conditions will facilitate a gradual strengthening of the snowpack. Gradual decrease in danger of dry avalanches. More gliding avalanches and moist snow slides are possible, in particular medium-sized ones.

Danger Level 2 - Moderate

AM:



Tendency: Constant avalanche danger →
 on Sunday 17 03 2024



Wet snow



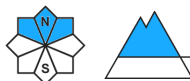
Snowpack stability: **poor**

Frequency: **few**

Avalanche size: **medium**



Wind slab



Treeline

Snowpack stability: **poor**

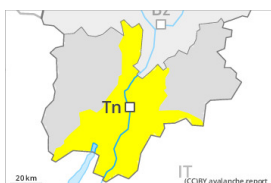
Frequency: **few**

Avalanche size: **medium**

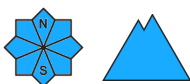
PM:



Tendency: Constant avalanche danger →
 on Sunday 17 03 2024



Wet snow



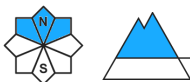
Snowpack stability: **poor**

Frequency: **some**

Avalanche size: **medium**



Wind slab



Treeline

Snowpack stability: **poor**

Frequency: **some**

Avalanche size: **medium**

The danger of moist avalanches will increase during the day. The fresh and older wind slabs must be evaluated with care and prudence.

As a consequence of warming moist and wet avalanches are possible as the day progresses, but they can reach medium size in some cases, in particular on steep sunny slopes, as well as at the base of rock walls in all altitude zones. Individual gliding avalanches can also occur.

The wind slabs of the last few days are to be evaluated with care and prudence on very steep shady slopes at elevated altitudes. Caution is to be exercised in particular adjacent to ridgelines and in gullies and bowls, as well as in places that are protected from the wind.

Snowpack

Danger patterns

dp.10: springtime scenario

Outgoing longwave radiation during the night will be reduced. The weather conditions from the early morning will give rise to gradual moistening of the snowpack in particular on very steep slopes. At low and intermediate altitudes a little snow is lying.

Tendency

The weather conditions will facilitate a gradual strengthening of the snowpack. Gradual decrease in danger



of dry avalanches. More gliding avalanches and moist snow slides are possible, even medium-sized ones.