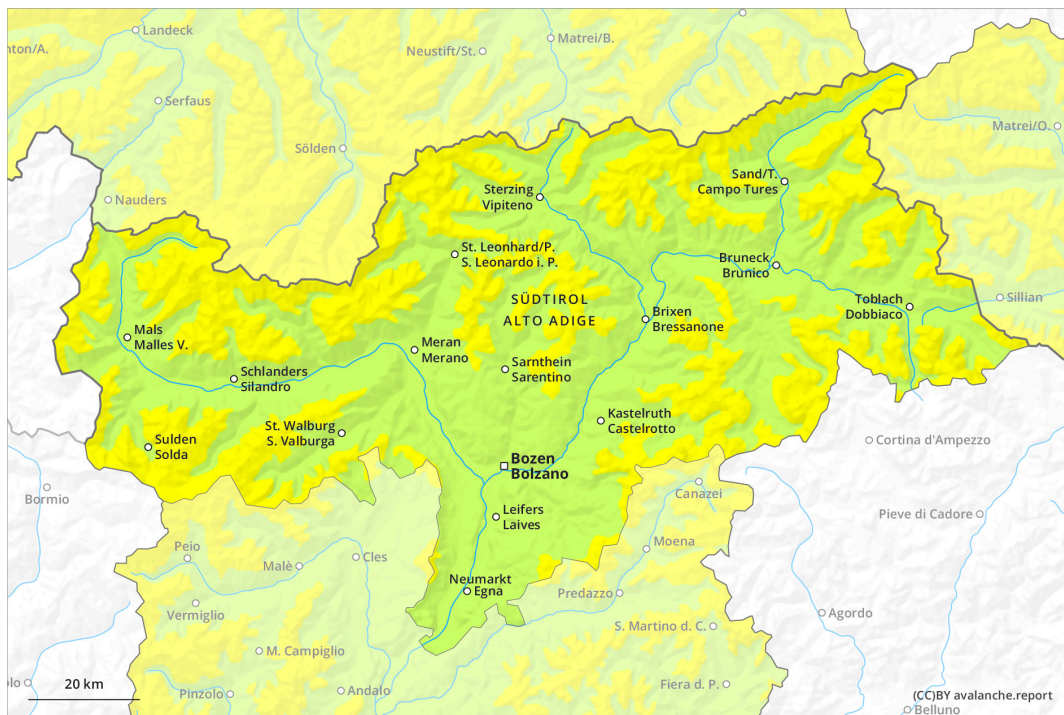
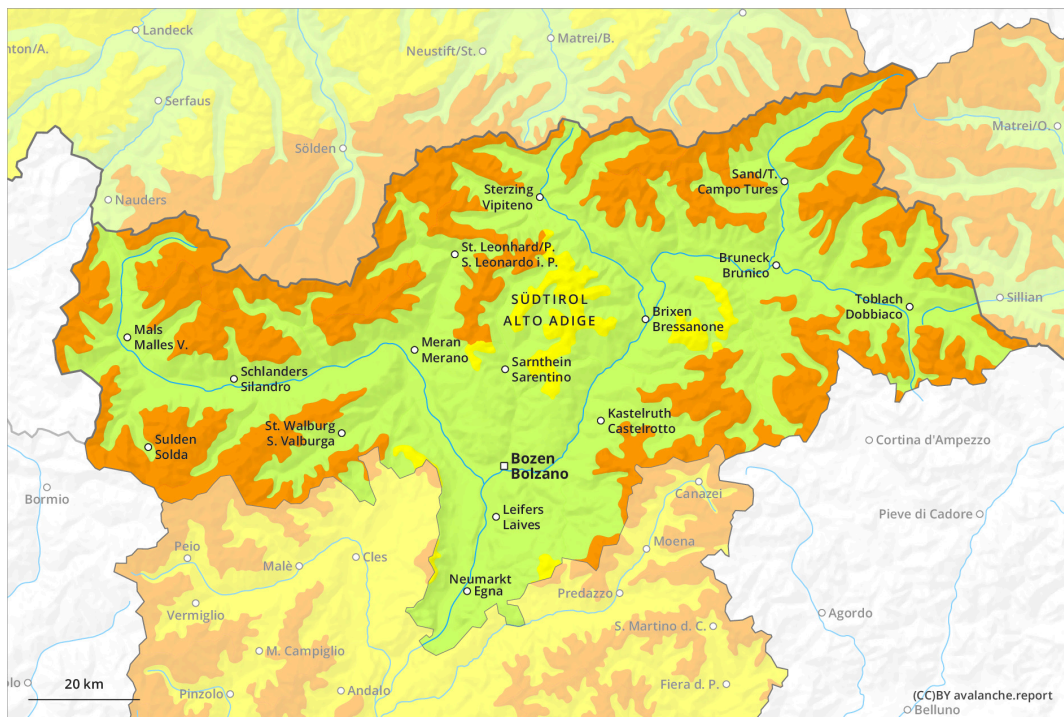




AM

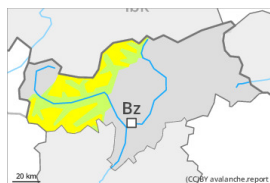


PM





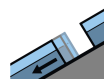
Danger Level 3 - Considerable

AM:**Tendency: Increasing avalanche danger**
on Thursday 28 03 2024

Wind slab



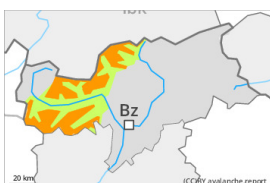
Treeline

Snowpack stability: **poor**Frequency: **some**Avalanche size: **medium**

Gliding snow



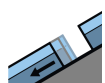
2600m

Snowpack stability: **very poor**Frequency: **few**Avalanche size: **medium****PM:****Tendency: Increasing avalanche danger**
on Thursday 28 03 2024

Wind slab



Treeline

Snowpack stability: **very poor**Frequency: **some**Avalanche size: **large**

Gliding snow



2600m

Snowpack stability: **very poor**Frequency: **few**Avalanche size: **medium**

Significant increase in avalanche danger as a consequence of new snow and strong wind.

During the day: Large quantities of fresh snow and the wind-drifted snow can be released easily, or, in isolated cases naturally in all aspects above the tree line. These will be covered with new snow in some cases and therefore difficult to recognise. The prevalence of the avalanche prone locations will increase with altitude. Caution is to be exercised in particular on very steep shady slopes, as well as adjacent to ridgelines and in gullies and bowls. In isolated cases avalanches are large.

A latent danger of gliding avalanches exists. This applies on steep grassy slopes below approximately 2600 m. Avalanches can reach medium size. Areas with glide cracks are to be avoided.

Snowpack

Danger patterns

dp.6: cold, loose snow and wind

dp.2: gliding snow

Over a wide area 25 to 40 cm of snow, and up to 50 cm in some localities, will fall above approximately 1200 m. The wind will be strong to storm force at times.

Fresh wind slabs will be deposited on soft layers in particular on shady slopes at elevated altitudes.

The old snowpack will be moist below approximately 2400 m.



Tendency

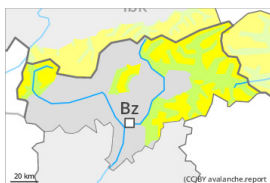
Fresh wind slabs represent the main danger. Some snow will fall in some localities. Gliding snow requires caution.



Danger Level 3 - Considerable

AM:**Tendency: Constant avalanche danger** →

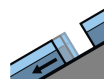
on Thursday 28 03 2024



Wind slab



Treeline

Snowpack stability: **poor**Frequency: **some**Avalanche size: **medium**

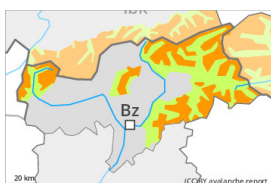
Gliding snow



2600m

Snowpack stability: **very poor**Frequency: **few**Avalanche size: **medium****PM:****Tendency: Constant avalanche danger** →

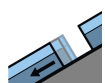
on Thursday 28 03 2024



Wind slab



Treeline

Snowpack stability: **poor**Frequency: **many**Avalanche size: **medium**

Gliding snow



2600m

Snowpack stability: **very poor**Frequency: **few**Avalanche size: **medium**

Increase in avalanche danger as a consequence of new snow and strong wind.

The fresh snow and the extensive wind slabs can be released by a single winter sport participant in particular on west to north to east facing aspects above the tree line. Caution is to be exercised in particular at the base of rock walls and behind abrupt changes in the terrain. The prevalence of avalanche prone locations and likelihood of triggering will increase as the day progresses. The prevalence of avalanche prone locations and likelihood of triggering will increase with altitude. Mostly avalanches are medium-sized.

In addition a latent danger of gliding avalanches exists. This applies on steep grassy slopes below approximately 2600 m. Avalanches can reach large size in isolated cases. Areas with glide cracks are to be avoided.

Snowpack

Danger patterns

dp.6: cold, loose snow and wind

dp.2: gliding snow

Over a wide area 20 to 30 cm of snow, and even more in some localities, will fall until the evening above approximately 1200 m. The wind will be strong to storm force at times.



Fresh and somewhat older wind slabs are lying on soft layers in particular on west to north to east facing aspects at elevated altitudes.

Tendency

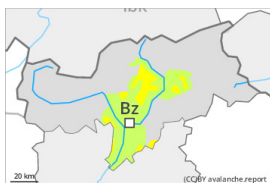
Fresh wind slabs represent the main danger. Gliding snow requires caution.

Danger Level 2 - Moderate

AM:



Tendency: **Constant avalanche danger** →
on Thursday 28 03 2024

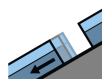


Wind slab



Treeline

Snowpack stability: **poor**
Frequency: **some**
Avalanche size: **medium**



Gliding snow



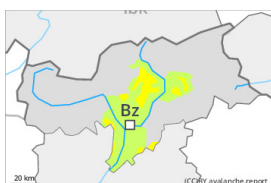
2600m

Snowpack stability: **very poor**
Frequency: **few**
Avalanche size: **medium**

PM:



Tendency: **Constant avalanche danger** →
on Thursday 28 03 2024

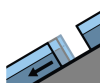


Wind slab



Treeline

Snowpack stability: **poor**
Frequency: **some**
Avalanche size: **medium**



Gliding snow



2600m

Snowpack stability: **very poor**
Frequency: **few**
Avalanche size: **medium**

Increase in avalanche danger as a consequence of new snow and strong wind.

The fresh snow and the extensive wind slabs can be released by a single winter sport participant in particular on west to north to east facing aspects above the tree line. Caution is to be exercised in particular at the base of rock walls and behind abrupt changes in the terrain. The prevalence of avalanche prone locations and likelihood of triggering will increase as the day progresses. Mostly avalanches are medium-sized.

In addition a latent danger of gliding avalanches exists. This applies on steep grassy slopes below approximately 2600 m. Avalanches can reach large size in isolated cases. Areas with glide cracks are to be avoided.

Snowpack

Danger patterns

dp.6: cold, loose snow and wind

dp.2: gliding snow

Over a wide area 10 to 20 cm of snow, and even more in some localities, will fall until the evening above approximately 1200 m. The wind will be strong to storm force at times.

Fresh and somewhat older wind slabs are lying on soft layers in particular on west to north to east facing



aspects at elevated altitudes.

Tendency

Fresh wind slabs represent the main danger. Gliding snow requires caution.