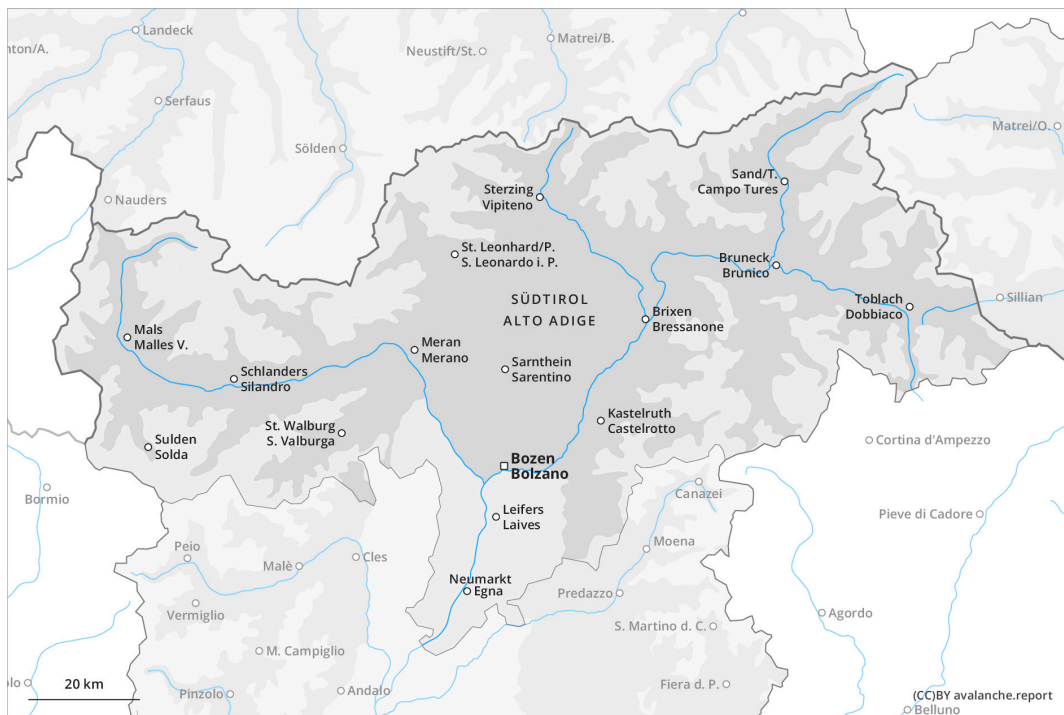
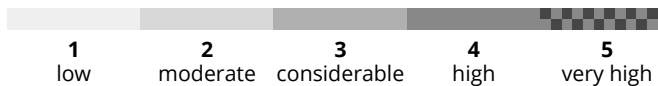




earlier



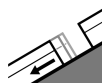
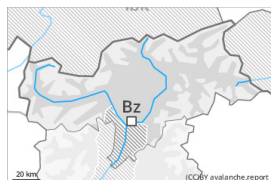
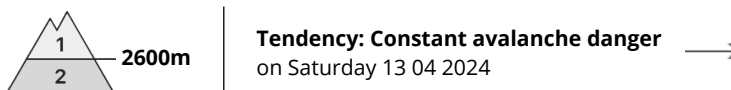
later





Danger Level 3 - Considerable

earlier



Gliding snow



2600m

Frequency: **some**

Avalanche size: **medium**



Wet snow



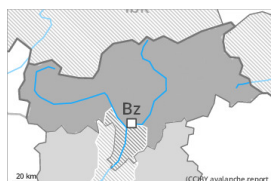
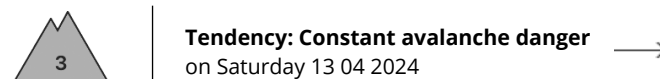
2400m

Snowpack stability: **very poor**

Frequency: **few**

Avalanche size: **medium**

later



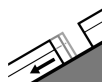
Wet snow



Snowpack stability: **very poor**

Frequency: **some**

Avalanche size: **medium**



Gliding snow



Frequency: **some**

Avalanche size: **large**

Significant warming: The danger of wet avalanches will increase during the day.

As a consequence of warming and solar radiation, the natural activity of wet avalanches will rapidly increase. This applies on steep east and west facing slopes below approximately 2800 m, as well as on steep south facing slopes in all altitude zones. This also applies on shady slopes below approximately 2600 m. The wet avalanches can release the saturated snowpack and reach large size in isolated cases. In steep gullies avalanches can in isolated cases reach as far as the valley bottom.

The mostly small wind slabs of the last few days can be released in isolated cases on steep shady slopes at high altitudes and in high Alpine regions.

On steep grassy slopes more frequent medium-sized and, in isolated cases, large gliding avalanches are possible below approximately 2600 m. Areas with glide cracks are to be avoided.

Backcountry tours and ascents to alpine cabins should be started and concluded very early.



Snowpack

Danger patterns

dp.10: springtime scenario

dp.2: gliding snow

The weather will be very warm. The surface of the snowpack will freeze to form a strong crust and will already soften in the late morning. Sunshine and high temperatures will give rise from early morning to increasing and thorough wetting of the snowpack. These conditions will cause a substantial weakening of the snowpack. In areas with a thinner snowpack the saturation and consequently the loss of strength happens more rapidly

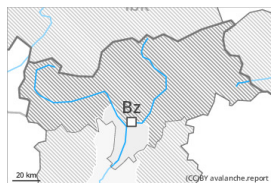
Hardly any snow is lying at low and intermediate altitudes.

Tendency

The weather will be exceptionally warm. The summery weather conditions will give rise to rapid and thorough wetting of the snowpack at elevated altitudes. The danger of wet and gliding avalanches will increase quickly during the day.



Danger Level 1 - Low



Tendency: Constant avalanche danger →
on Saturday 13 04 2024

The weather will be very warm. The danger of wet avalanches will increase during the day.

As a consequence of warming and solar radiation, the activity of wet avalanches will gradually increase. On steep grassy slopes mostly small gliding avalanches are possible.

Snowpack

Danger patterns

dp.10: springtime scenario

dp.2: gliding snow

Some snow fell on Wednesday in some localities. The surface of the snowpack will freeze very little and will already be soft in the early morning.

Below approximately 1800 m from a snow sport perspective, in most cases insufficient snow is lying.

Tendency

Conditions are favorable concerning avalanche hazard.