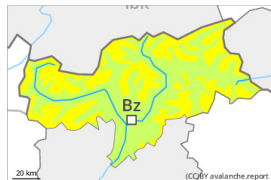


Danger Level 2 - Moderate



Tendency: Decreasing avalanche danger
on Friday 26 04 2024



New snow



Snowpack stability: **poor**

Frequency: **some**

Avalanche size: **medium**

Loose snow avalanches are to be expected.

Small to medium-sized loose snow avalanches are to be expected. In the event of prolonged bright spells this applies on extremely steep slopes and.

The new snow-covered wind slabs are now only very rarely prone to triggering. Individual avalanche prone locations are to be found in particular adjacent to ridgelines above approximately 2800 m. The number and size of avalanche prone locations will increase with altitude.

Individual gliding avalanches are possible. This applies on steep grassy slopes below approximately 2600 m. Areas with glide cracks are to be avoided.

Snowpack

Up to 20 cm of snow fell on Tuesday. The somewhat older wind slabs have bonded quite well with the old snowpack at elevated altitudes. The old snowpack is well consolidated.

Tendency

The avalanche danger will decrease gradually.