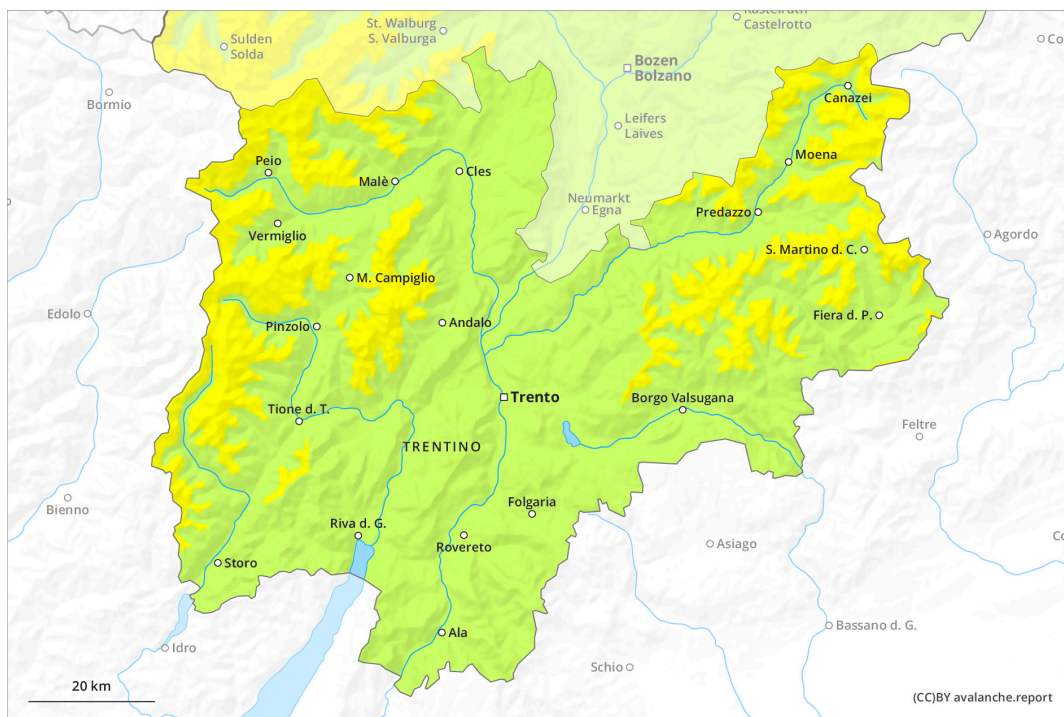
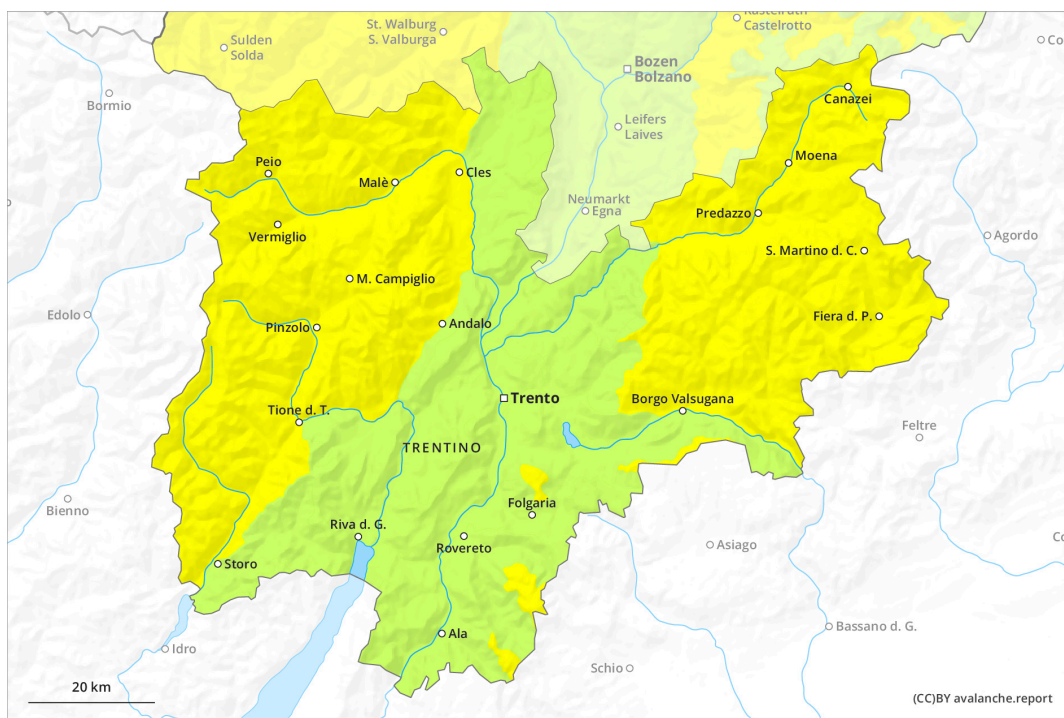




### earlier



### later

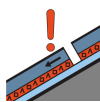
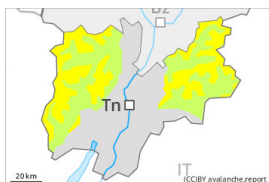


## Danger Level 2 - Moderate

earlier



**Tendency: Constant avalanche danger** →  
 on Tuesday 30 04 2024



Persistent weak layer



Snowpack stability: **poor**

Frequency: **few**

Avalanche size: **medium**



Wet snow



Snowpack stability: **poor**

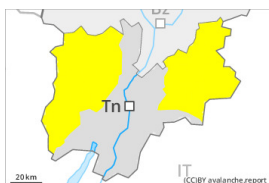
Frequency: **few**

Avalanche size: **small**

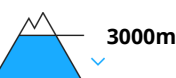
later



**Tendency: Constant avalanche danger** →  
 on Tuesday 30 04 2024



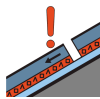
Wet snow



Snowpack stability: **very poor**

Frequency: **few**

Avalanche size: **medium**



Persistent weak layer



Snowpack stability: **poor**

Frequency: **few**

Avalanche size: **medium**

A clear night will be followed by favourable conditions over a wide area. Increase in danger of wet and gliding avalanches in the course of the day.

Especially on rocky sunny slopes small to medium-sized wet loose snow avalanches are to be expected. As the day progresses also on shady slopes there will be an increase in the danger of wet avalanches. In addition individual small and medium-sized gliding avalanches are possible. This applies on steep grassy slopes below approximately 2600 m. Areas with glide cracks are to be avoided.

Weak layers in the upper part of the snowpack can still be released in isolated cases by winter sport participants on very steep shady slopes. Shady slopes are unfavourable, in particular above approximately 2400 m. Mostly avalanches are medium-sized. The avalanche prone locations are difficult to recognise. In addition the fresh wind slabs in high Alpine regions are prone to triggering in some cases.

## Snowpack



### Danger patterns

dp.10: springtime scenario

The surface of the snowpack will freeze to form a strong crust only at high altitudes.

The high temperatures as the day progresses will give rise to increasing softening of the snowpack also on shady slopes at elevated altitudes. Caution is to be exercised in particular on sunny slopes below approximately 3000 m.

Isolated avalanche prone weak layers exist in the top section of the snowpack especially on shady slopes.

As a consequence of a sometimes strong southwesterly wind, sometimes avalanche prone wind slabs formed in the vicinity of peaks. This applies in particular at high altitude.

### Tendency

The danger of wet avalanches will persist.

## Danger Level 2 - Moderate

earlier



**Tendency: Constant avalanche danger** →  
 on Tuesday 30 04 2024



Wet snow

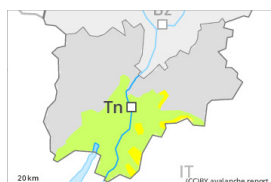


Snowpack stability: **very poor**

Frequency: **few**

Avalanche size: **small**

later



2000m

**Tendency: Constant avalanche danger** →  
 on Tuesday 30 04 2024



Wet snow



Snowpack stability: **very poor**

Frequency: **few**

Avalanche size: **medium**

### Wet snow requires caution.

The danger of wet avalanches will already increase in the early morning.

Especially on rocky east, south and west facing slopes mostly small wet avalanches are to be expected. As the day progresses also on shady slopes there will be an increase in the danger of wet avalanches.

In addition very occasional mostly small gliding avalanches are possible. This applies on steep grassy slopes. Areas with glide cracks are to be avoided.

### Snowpack

**Danger patterns**

dp.10: springtime scenario

The surface of the snowpack cooled hardly at all during the overcast night and will soften quickly, especially on sunny slopes below approximately 2800 m. The high temperatures as the day progresses will give rise to increasing softening of the snowpack also on shady slopes at elevated altitudes.

At low and intermediate altitudes hardly any snow is lying.

### Tendency

The danger of wet avalanches will persist.

## Danger Level 1 - Low



**Tendency: Constant avalanche danger** →  
on Tuesday 30 04 2024



Wet snow



Snowpack stability: **very poor**

Frequency: **few**

Avalanche size: **small**

### Wet snow requires caution.

The danger of wet avalanches will increase during the day. Especially on rocky slopes mostly small wet avalanches are to be expected.

In addition very occasional mostly small gliding avalanches are possible. This applies on steep grassy slopes. Areas with glide cracks are to be avoided.

### Snowpack

#### Danger patterns

dp.10: springtime scenario

The surface of the snowpack has frozen to form a strong crust and will soften quickly. Sunshine and high temperatures will give rise as the day progresses to increasing softening of the snowpack also on shady slopes at elevated altitudes.

At low and intermediate altitudes hardly any snow is lying.

### Tendency

The danger of wet avalanches will persist.