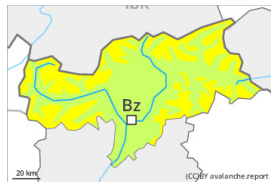


## Danger Level 2 - Moderate



**Tendency: Constant avalanche danger** →  
on Saturday 04 05 2024



Wind slab



Snowpack stability: **poor**

Frequency: **few**

Avalanche size: **medium**

### Fresh wind slabs are to be evaluated with care and prudence.

High altitudes and the high Alpine regions: The fresh wind slabs are in isolated cases prone to triggering on west to north to east facing aspects. Avalanches can reach medium size in particular in the regions exposed to heavier precipitation.

Only isolated wet and gliding avalanches are possible. In very isolated cases avalanches can release the saturated snowpack and reach a dangerous size.

The Avalanche Warning Service currently has only a small amount of information that has been collected in the field, so that the avalanche danger should be investigated especially thoroughly in the relevant locality.

## Snowpack

### Danger patterns

dp.6: cold, loose snow and wind

High altitudes and the high Alpine regions: Some snow will fall in some localities. In some localities up to 15 cm of snow, and even more in some localities, has fallen. As a consequence of a sometimes strong wind from variable directions, wind slabs will form in particular in gullies and bowls and behind abrupt changes in the terrain.

## Tendency

Fresh wind slabs require caution. Regions exposed to heavier precipitation: As a consequence of warming during the day and solar radiation more frequent loose snow avalanches are to be expected as the day progresses, even medium-sized ones, especially in steep rocky terrain in all aspects.