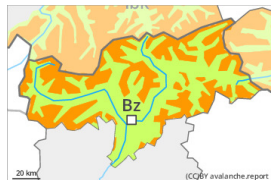


Danger Level 3 - Considerable



New snow



Snowpack stability: **very poor**

Frequency: **many**

Avalanche size: **medium**

The new snow of the last four days can be released easily or naturally in all aspects above approximately 1500 m. This snow can be released easily or naturally in all aspects above the tree line. The new snow can be released by a single winter sport participant especially on west to north to south facing aspects above the tree line. Over a wide area 50 cm of snow, and up to 70 cm in some localities, will fall until the early morning above approximately 1800 m. In particular in the regions exposed to heavier precipitation numerous medium-sized and, in isolated cases, large slab avalanches are to be expected as the snowfall becomes more intense. As a consequence of new snow and a sometimes storm force wind, sometimes large wind slabs will form in the course of the day in all aspects. The off-piste conditions are dangerous. Temporary safety measures may be necessary.

Snowpack

Danger patterns

dp.8: surface hoar blanketed with snow

dp.4: cold following warm / warm following cold