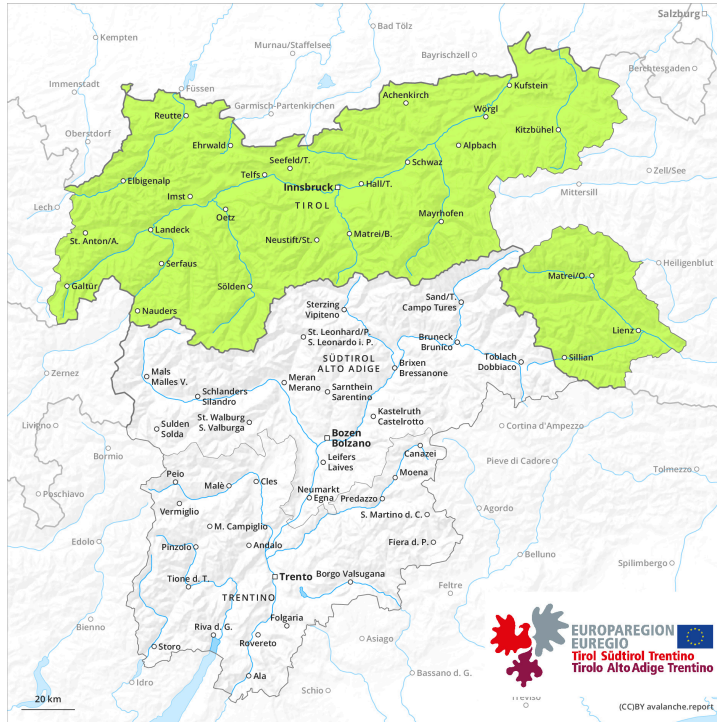
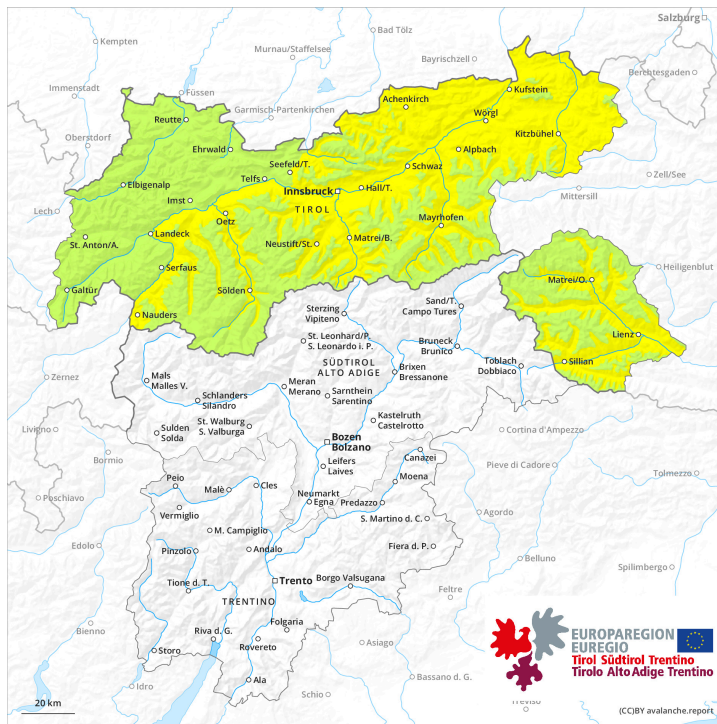




AM



PM



Danger Level 2 - Moderate

AM:



Tendency: Increasing avalanche danger
 on Wednesday 20 09 2023



Persistent weak layer



2200m

Snowpack stability: **fair**

Frequency: **few**

Avalanche size: **medium**

PM:



2200m

Tendency: Increasing avalanche danger
 on Wednesday 20 09 2023



Persistent weak layer



2200m

Snowpack stability: **fair**

Frequency: **few**

Avalanche size: **medium**



Wet snow



2600m

Snowpack stability: **very poor**

Frequency: **few**

Avalanche size: **medium**

Weakly bonded old snow and wet snow require caution.

The early morning will see favourable conditions over a wide area.

Weak layers in the old snowpack can be released by individual winter sport participants, especially at transitions from a shallow to a deep snowpack, when entering gullies and bowls for example, as well as in little used backcountry terrain.

The avalanche prone locations are rare but are difficult to recognise. Mostly avalanches are medium-sized. In steep terrain there is a danger of falling on the hard snow surface.

On very steep sunny slopes small to medium-sized wet avalanches are possible as a consequence of warming during the day. Backcountry tours should be concluded timely.

Snowpack

The snowpack will be well bonded. Isolated avalanche prone weak layers exist in the snowpack, especially on shady slopes above approximately 2200 m, and on sunny slopes at elevated altitudes.

On Saturday the wind will be strong in the vicinity of peaks. The wind will transport only a little snow.

The weather will be mild. The surface of the snowpack has frozen to form a strong crust and will soften during the day. Sunshine and high temperatures will give rise as the day progresses to increasing softening of the snowpack.

At intermediate altitudes only a small amount of snow is lying for the time of year.

Tendency



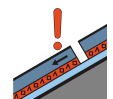
On Sunday the wind will be strong adjacent to ridgelines in some regions. Increase in danger of wet avalanches in the course of the day.

Danger Level 1 - Low

AM:



Tendency: Increasing avalanche danger
 on Wednesday 20 09 2023



Persistent
 weak layer



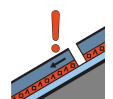
2200m

Snowpack stability: **fair**
 Frequency: **few**
 Avalanche size: **medium**

PM:



Tendency: Increasing avalanche danger
 on Wednesday 20 09 2023



Persistent
 weak layer



2200m

Snowpack stability: **fair**
 Frequency: **few**
 Avalanche size: **medium**

Weakly bonded old snow requires caution.

The early morning will see favourable conditions over a wide area.

Weak layers in the old snowpack can be released by individual winter sport participants, especially at transitions from a shallow to a deep snowpack, when entering gullies and bowls for example, as well as in little used backcountry terrain.

The avalanche prone locations are rare but are difficult to recognise. Mostly avalanches are medium-sized. In steep terrain there is a danger of falling on the hard snow surface.

Snowpack

The snowpack will be well bonded. Isolated avalanche prone weak layers exist in the snowpack, especially on shady slopes above approximately 2200 m, and on sunny slopes at elevated altitudes.

On Saturday the wind will be strong in the vicinity of peaks. The wind will transport only a little snow.

The weather will be mild. The surface of the snowpack has frozen to form a strong crust and will hardly soften at all. Sunshine and high temperatures will give rise as the day progresses to slight moistening of the snowpack.

At intermediate altitudes only a small amount of snow is lying for the time of year.

Tendency

On Sunday the wind will be strong adjacent to ridgelines in some regions. Increase in danger of wet avalanches in the course of the day.