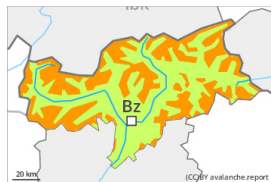




Danger Level 3 - Considerable



Wind slab

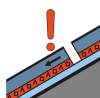


Treeline

Snowpack stability: **poor**

Frequency: **many**

Avalanche size: **medium**



Persistent weak layer



Treeline

Snowpack stability: **poor**

Frequency: **some**

Avalanche size: **large**

Wind slabs represent the main danger. Avalanches can also be released in deep layers and reach large size on shady slopes.