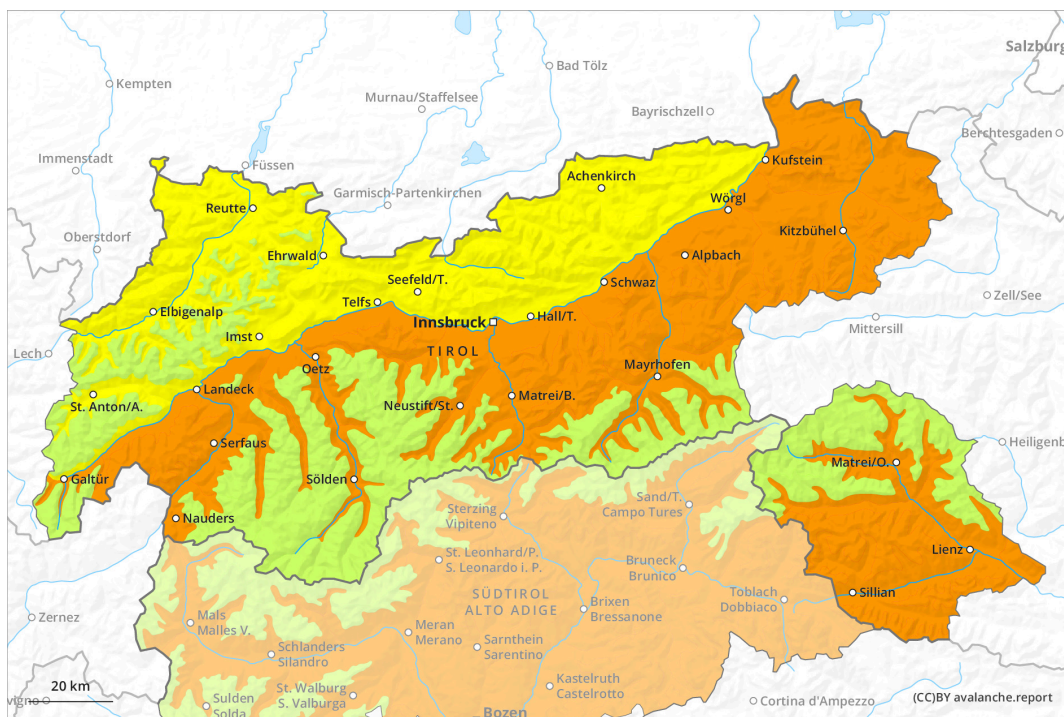
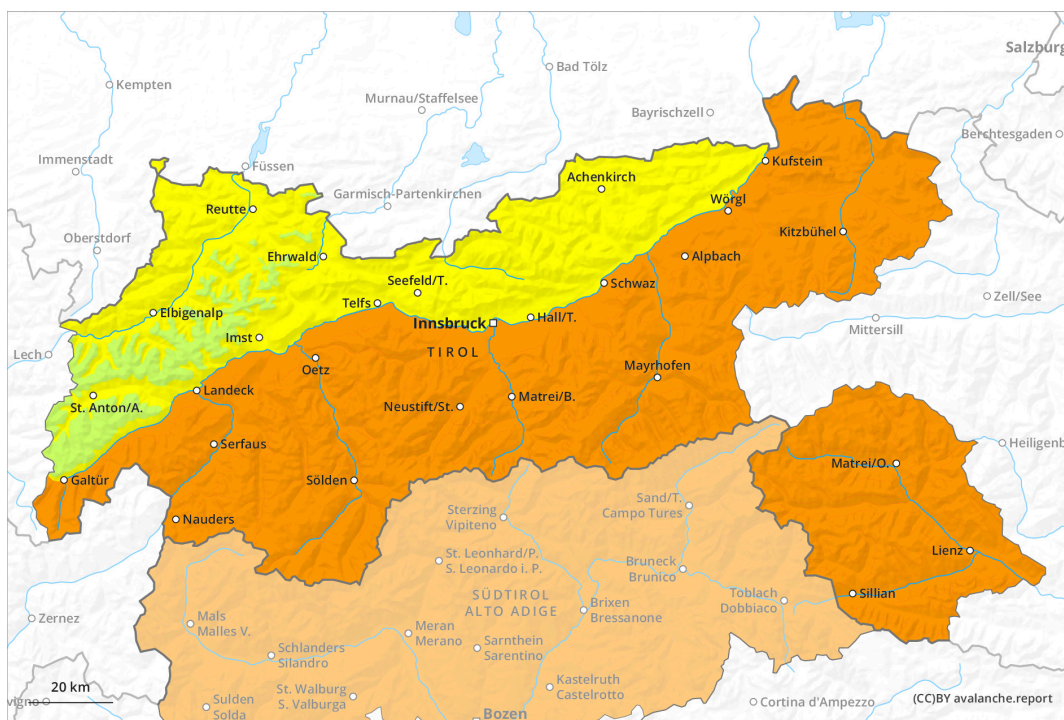


## earlier



## later

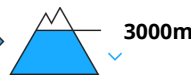


## Degré de danger 3 - Marqué

earlier



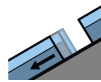
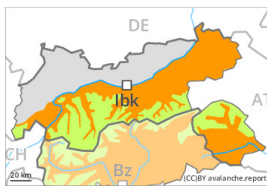
Avalanches mouillées  
(Neige humide)



Snowpack stability: **very poor**

Frequency: **some**

Avalanche size: **large**



Avalanches de glissement  
(Avalanches de fond)



Frequency: **some**

Avalanche size: **medium**



Wind slab



Snowpack stability: **poor**

Frequency: **few**

Avalanche size: **small**

later



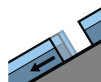
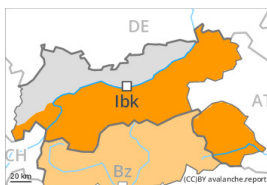
Avalanches mouillées  
(Neige humide)



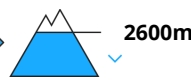
Snowpack stability: **very poor**

Frequency: **some**

Avalanche size: **large**



Avalanches de glissement  
(Avalanches de fond)



Frequency: **some**

Avalanche size: **medium**



Wind slab



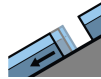
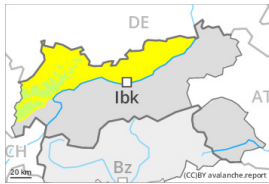
Snowpack stability: **poor**

Frequency: **few**

Avalanche size: **small**



## Degré de danger 2 - Limité



Avalanches de glissement  
(Avalanches de fond)



2600m

Frequency: **some**

Avalanche size: **medium**