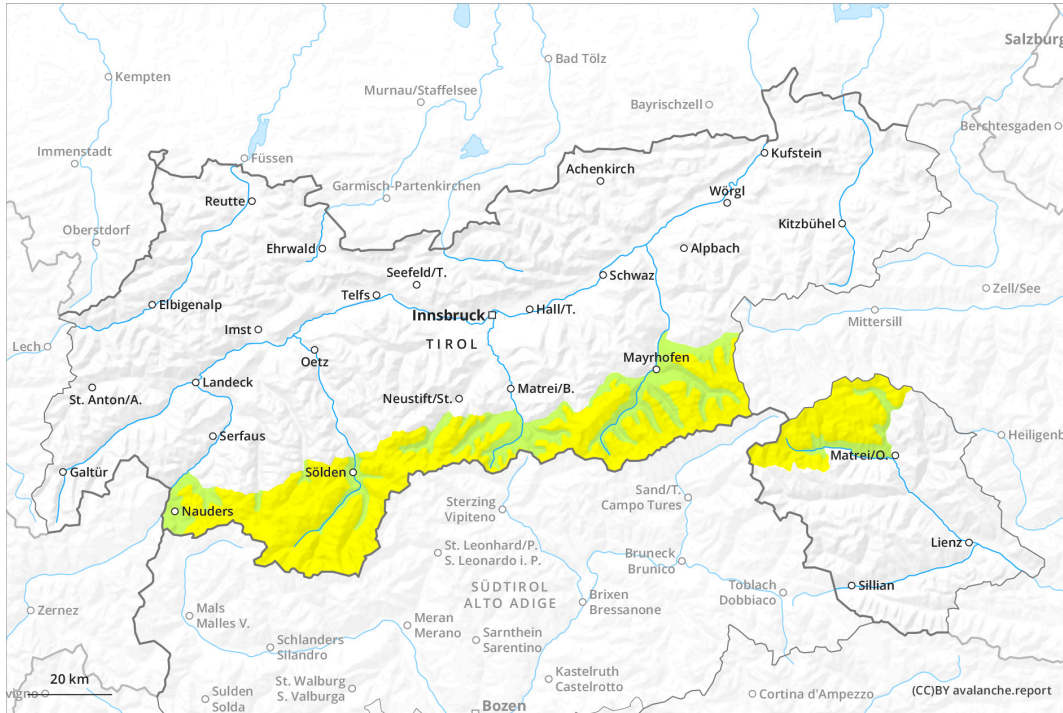
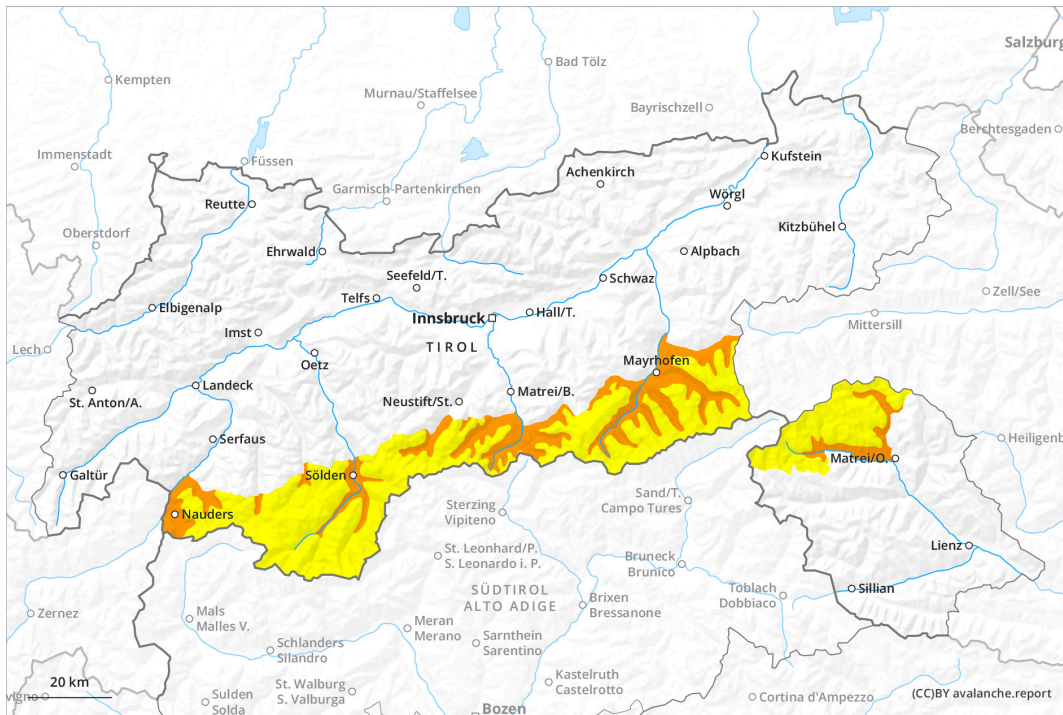




earlier

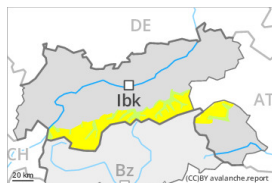


later



Danger Level 3 - Considerable

earlier



Tendency: Decreasing avalanche danger
 on Saturday 18 May 2024



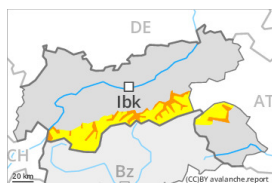
Wind slab



1800m

Snowpack stability: **poor**
 Frequency: **some**
 Avalanche size: **medium**

later



Tendency: Decreasing avalanche danger
 on Saturday 18 May 2024



Wet snow



2500m

Snowpack stability: **very poor**
 Frequency: **some**
 Avalanche size: **medium**



Wind slab



1800m

Snowpack stability: **poor**
 Frequency: **some**
 Avalanche size: **medium**

Fresh and older wind slabs require caution.