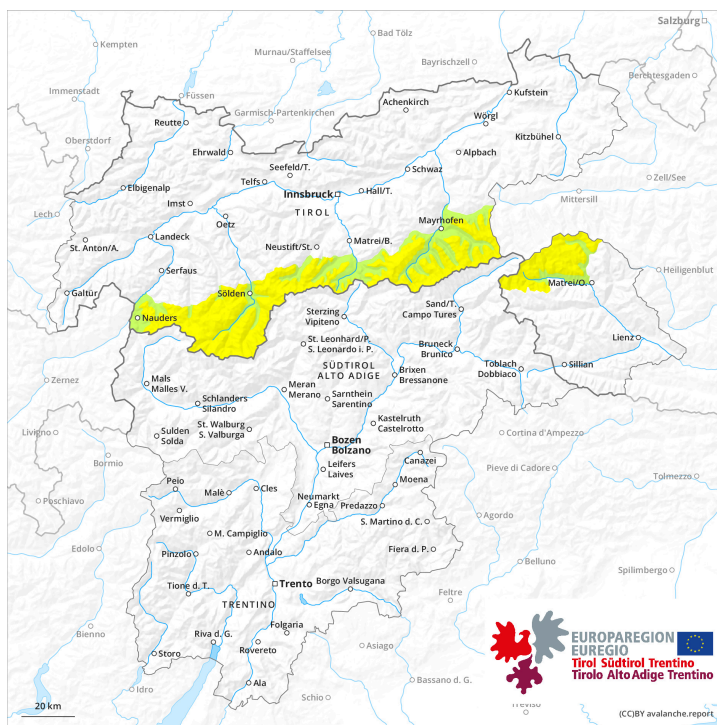
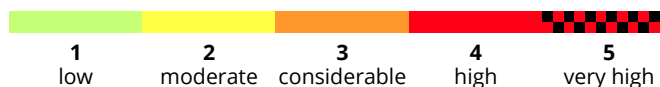
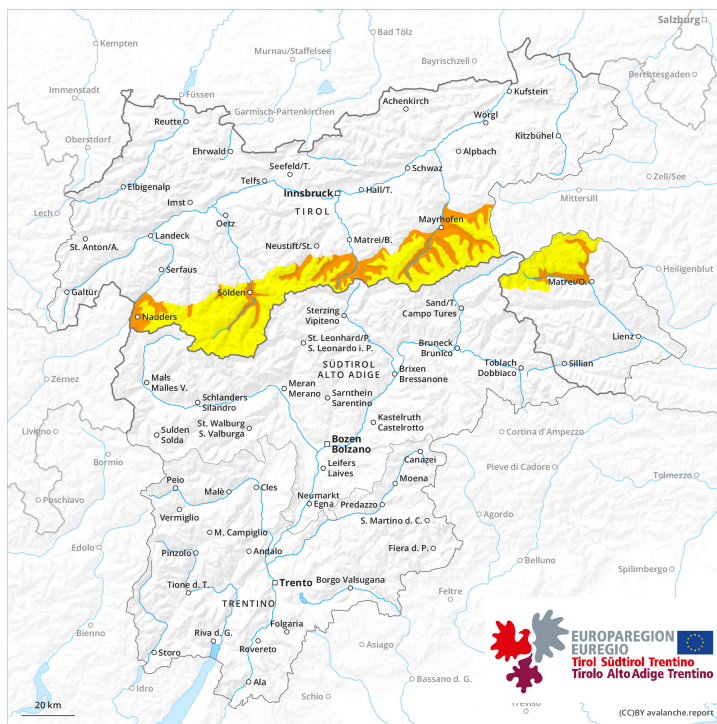




**earlier**

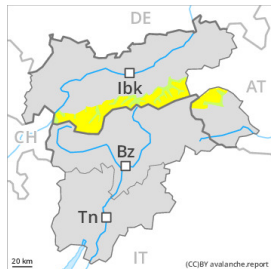


**later**



## Danger Level 3 - Considerable

earlier



**Tendency: Decreasing avalanche danger**  
 on Saturday 18 May 2024



Wind slab



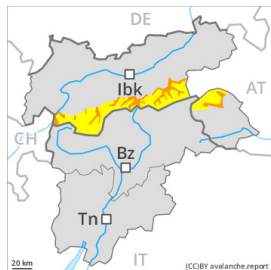
1800m

Snowpack stability: **poor**

Frequency: **some**

Avalanche size: **medium**

later



**Tendency: Decreasing avalanche danger**  
 on Saturday 18 May 2024



Wet snow



3000m

Snowpack stability: **very poor**

Frequency: **some**

Avalanche size: **medium**



Wind slab



1800m

Snowpack stability: **poor**

Frequency: **some**

Avalanche size: **medium**

Fresh and older wind slabs require caution.