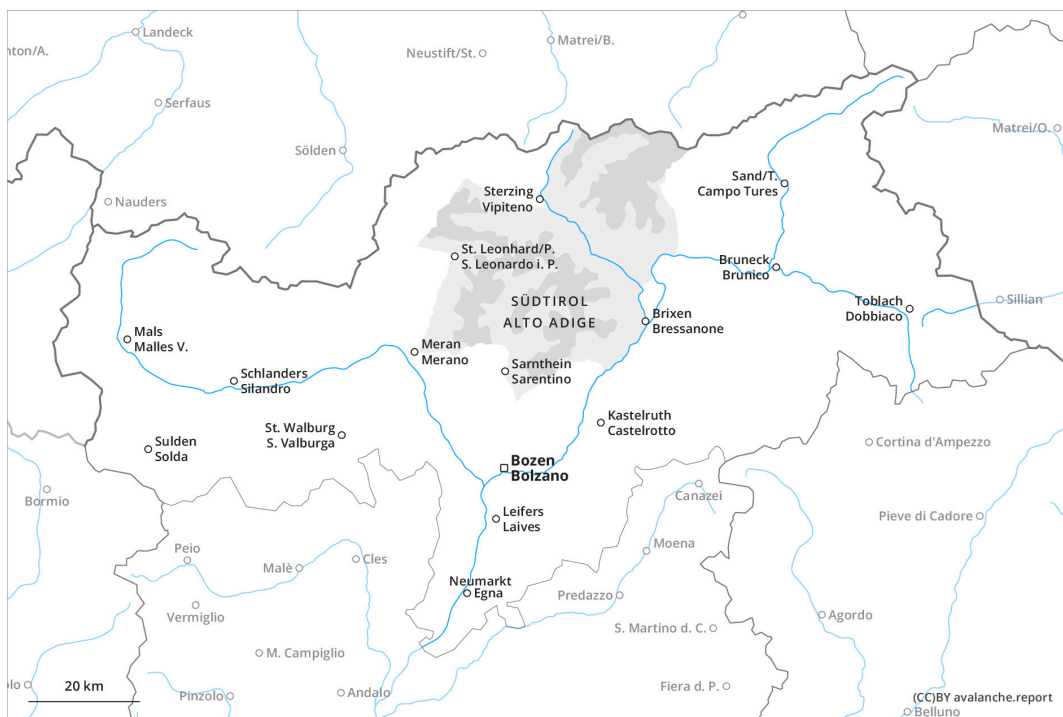
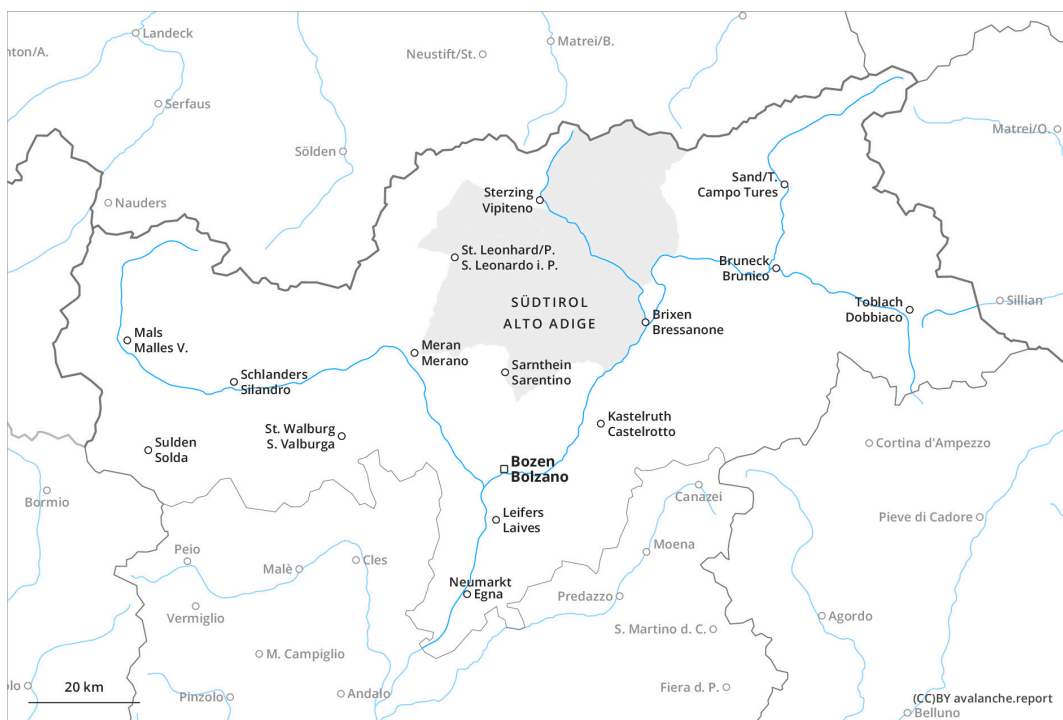




**earlier**



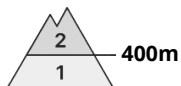
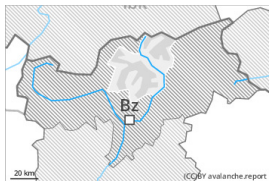
**later**



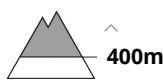


## Danger Level 2 - Moderate

earlier



Wind slab



Snowpack stability: **poor**

Frequency: **some**

Avalanche size: **medium**

later



Over a wide area new snow and wind slabs are lying on a moist old snowpack.

The new snow and wind slabs of the day before yesterday can be released easily or naturally in particular on steep sunny slopes above approximately 400 m.

### Snowpack

**Danger patterns**

dp.5: snowfall after a long period of cold