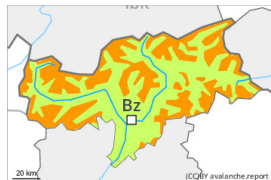




Danger Level 3 - Considerable



Tendency: Increasing avalanche danger
on Saturday 12 October 2024



Wind slab



Snowpack stability: **poor**

Frequency: **some**

Avalanche size: **large**

As a consequence of new snow and stormy weather a critical avalanche situation will persist in some regions.

The sometimes large wind slabs represent the main danger.

Snowpack

Danger patterns

dp.6: cold, loose snow and wind

dp.1: deep persistent weak layer

In the regions where more snow falls the avalanche danger is greater.

Tendency

With the change in wind direction, the natural avalanche activity will rapidly increase.