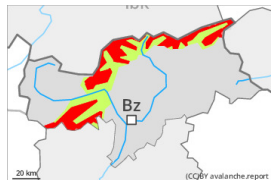




## Danger Level 4 - High



**Tendency: Constant avalanche danger** →  
on Thursday 31 October 2024



Snowpack stability: **poor**

Frequency: **many**

Avalanche size: **large**

Very large quantity of fresh snow as well as the large wind slabs represent the main danger.

The large quantity of fresh snow and the large wind slabs can be released by a single winter sport participant in all aspects.

### Snowpack

**Danger patterns**

dp.6: cold, loose snow and wind

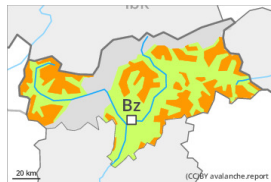
The old snowpack will be unstable over a wide area.

### Tendency

New snow and wind slabs in all altitude zones.



## Danger Level 3 - Considerable



**Tendency: Constant avalanche danger** →  
on Thursday 31 October 2024



New snow



Treeline

Snowpack stability: **poor**

Frequency: **some**

Avalanche size: **large**

### New snow requires caution.

The weather report and anticipated change in the avalanche danger are uncertain. The avalanche danger should be investigated very thoroughly in the relevant locality.

### Snowpack

**Danger patterns** dp.5: snowfall after a long period of cold

The new snow represents the main danger.

### Tendency

The new snow must be evaluated with care and prudence in all aspects.